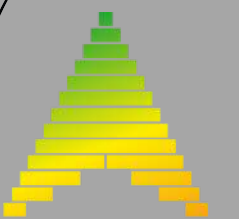


# BATUMI VIEW LUXURY



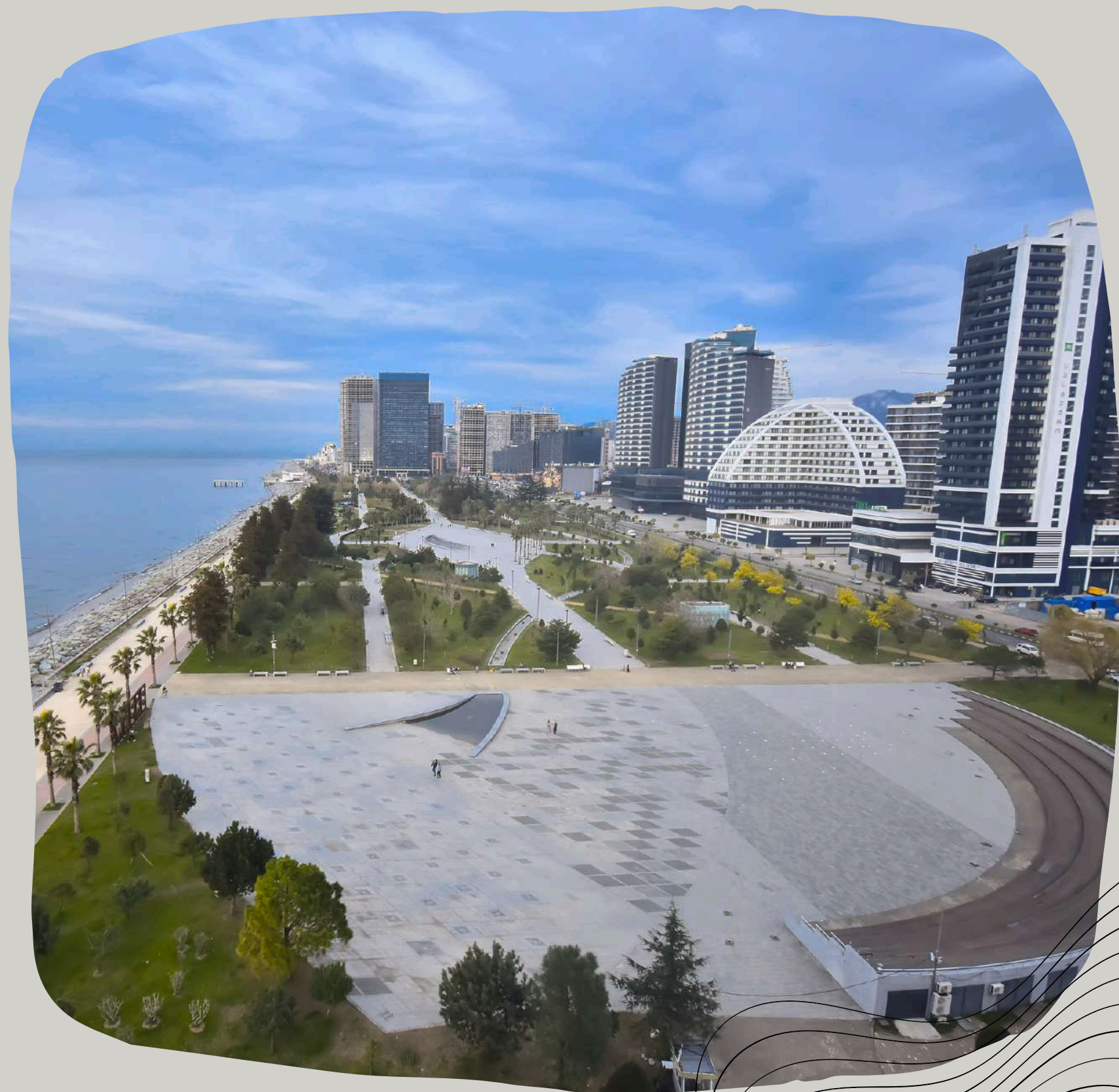


Located within a few steps of Batumi Beach and 1.2 km of Batumi international airport .

The property is set 9.3 km from Gonio Fortress, 10 km from Batumi Train Station and 28 km from Petra Fortress.

## • **FACILITIES AND SERVICES**

- 190 rooms in 12 categories
- apartments
- All rooms with balcony and View
- Free parking
- 24 Hours reception
- Restaurant Batumi View Terrace
- Laundry service





# STANDARD ROOM





## • STANDARD ROOM

- Standard room with king -size bed
- Size of the room - 40 m2
- All rooms with balconies
- Views over the sea or city
- All rooms non - smoking
- Safe -deposit box
- Complimentary bottled water
- Bathrobes and slippers
- Complimentary toiletries
- Coffee/tea facilities





# SUPERIOR TRIPLE ROOM





## • SUPERIOR TRIPLE ROOM

- Superior Triple room with one king - size and one single beds
- Size of the room - 50 m2
- All rooms with balconies
- Views over the sea or city
- All rooms non - smoking
- Safe -deposit box
- Complimentary bottled water
- Bathrobes and slippers
- Complimentary toiletries
- Coffee/tea facilities





# SUPERIOR FAMILY ROOM





## • SUPERIOR FAMILY ROOM

- Superior family room with one king - size and two single beds
- Size of the room - 60 m2
- All rooms with balconies
- Views over the sea or city
- All rooms non - smoking
- Safe -deposit box
- Complimentary bottled water
- Bathrobes and slippers
- Complimentary toiletries
- Coffee/tea facilities





# SUITE ROOM WITH TERRACE



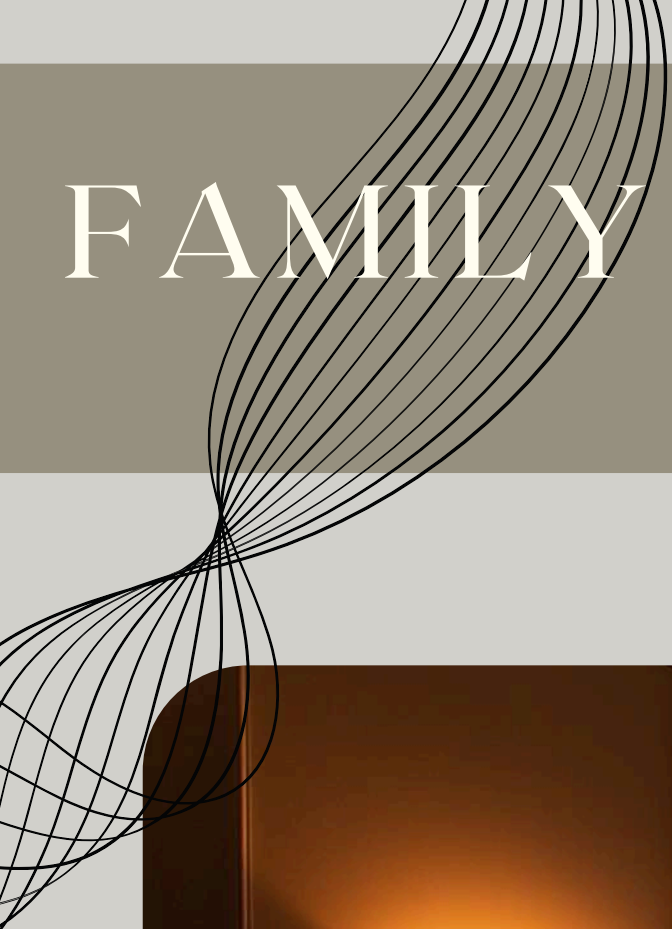


- SUITE WITH TERRACE

- Suite with one king -size bed and Terrace
- Size of the room - 60 m2
- Room with Terrace
- Views over the sea
- Non - smoking room
- Safe -deposit box
- Complimentary bottled water
- Bathrobes and slippers
- Complimentary toiletries
- Coffee/tea facilities







# FAMILY SUITE WITH TERRACE





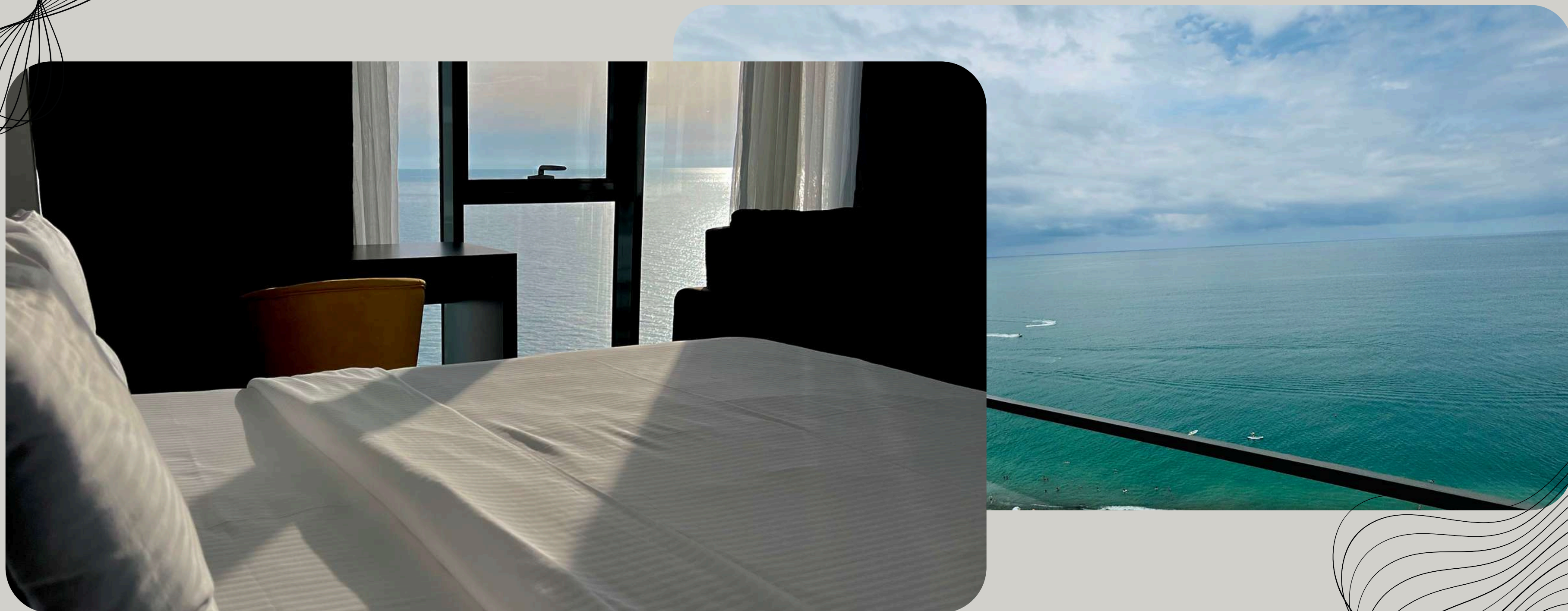
## • FAMILY SUITE

- Family Suite with one king -size, two single beds
- Size of the room - 65 m2
- Room with Terrace
- Views over the sea
- Non - smoking room
- Safe -deposit box
- Complimentary bottled water
- Bathrobes and slippers
- Complimentary toiletries
- Coffee/tea facilities





# PREMIUM STUDIO FRONT SEA VIEW





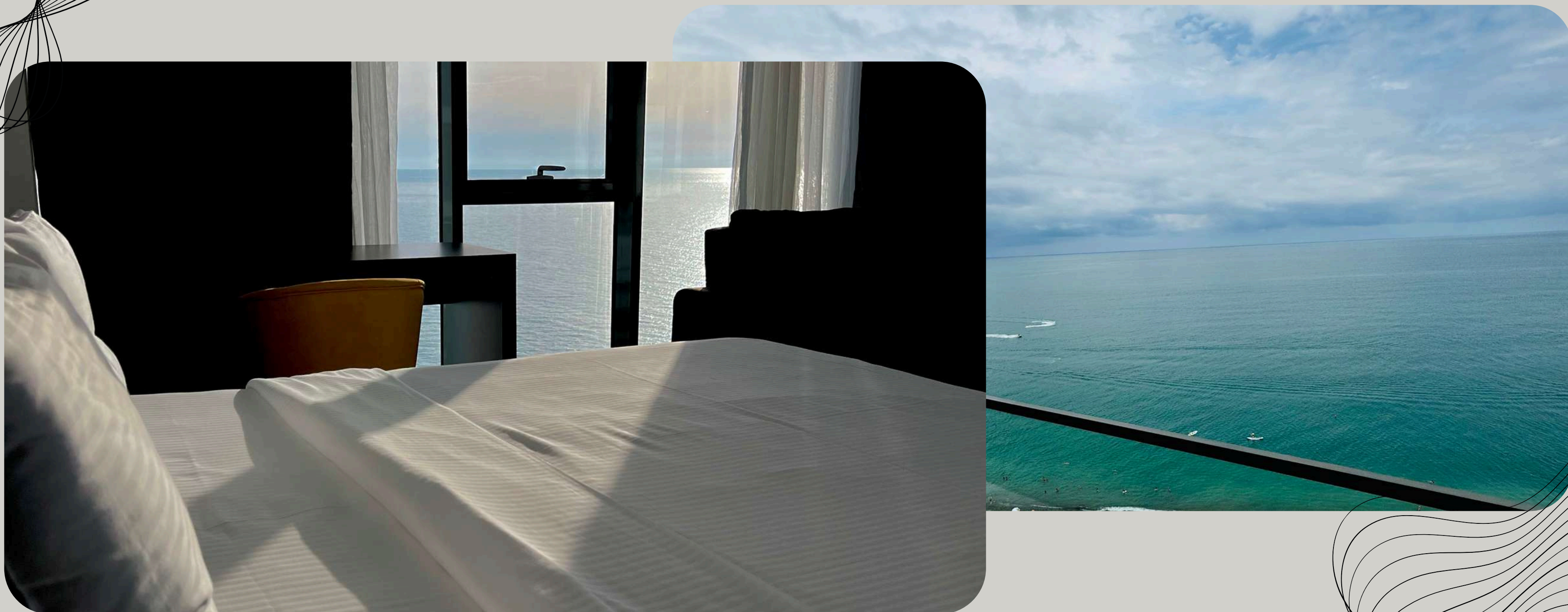
## • PREMIUM STUDIO FRONT SEA VIEW

- Premium studio apartment one king - size, bed.
- Size of the room - 40 m2
- All rooms with balconies
- Views over the sea
- Non - smoking room
- Complimentary bottled water
- Bathrobes and slippers
- Complimentary toiletries
- Coffee/tea facilities





# PREMIUM ONE BEDROOM FRONT SEA VIEW





- **PREMIUM ONE BEDROOM FRONT SEA VIEW**

- Premium one bedroom apartment one king -size, bed.
- Size of the room - 55 m2
- All rooms with balconies
- Views over the sea
- Non - smoking room
- Complimentary bottled water
- Bathrobes and slippers
- Complimentary toiletries
- Coffee/tea facilities





# PREMIUM ONE BEDROOM





## • PREMIUM ONE BEDROOM

- Premium one bedroom apartment one king -size, bed.
- Size of the room - 55 m2
- All rooms with balconies
- Views over the sea
- Non - smoking room
- Complimentary bottled water
- Bathrobes and slippers
- Complimentary toiletries
- Coffee/tea facilities





# PREMIUM STUDIO





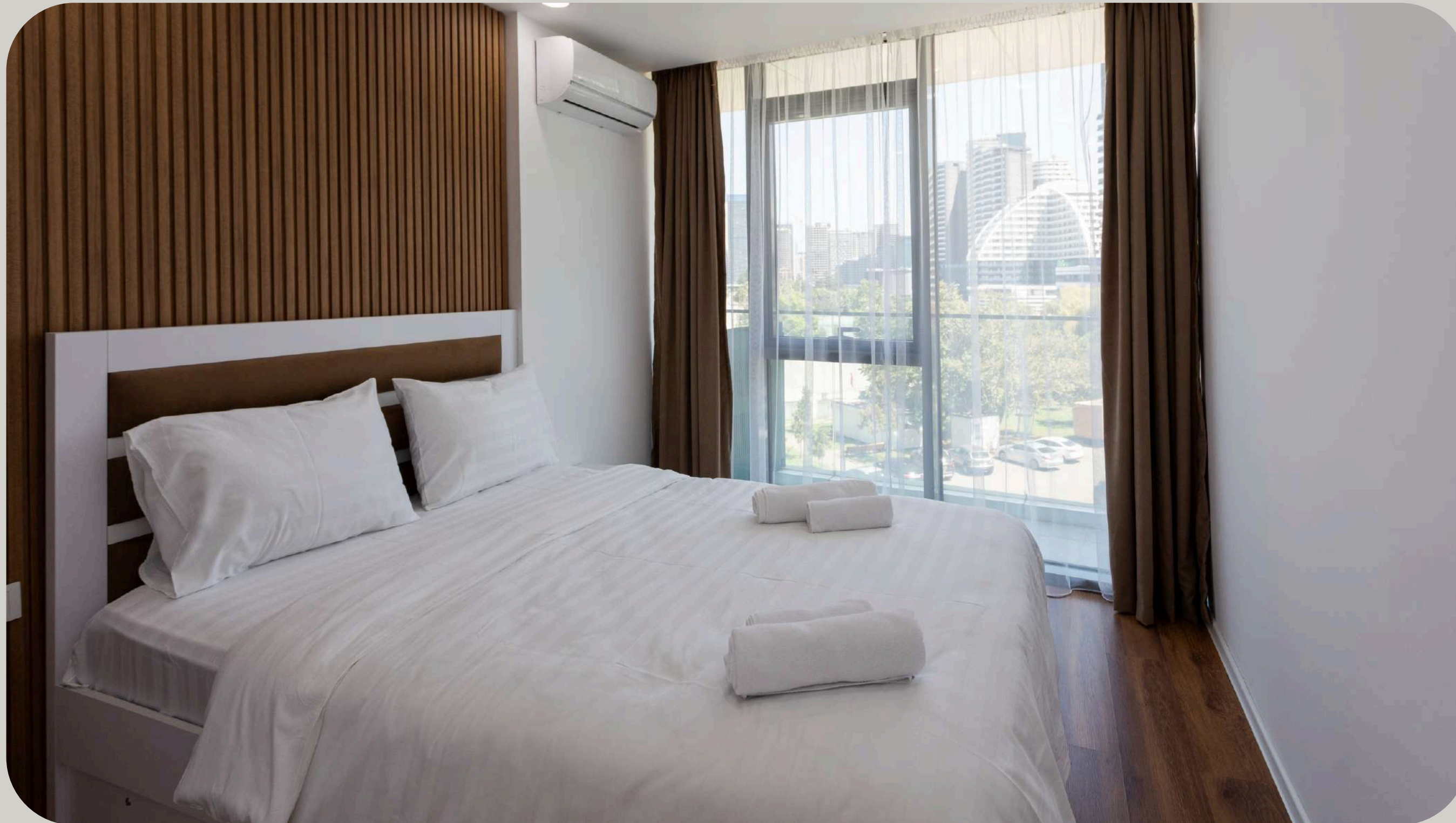
## • PREMIUM STUDIO

- Premium studio apartment one king - size, bed.
- Size of the room - 40 m2
- All rooms with balconies
- Views over the sea
- Non - smoking room
- Complimentary bottled water
- Bathrobes and slippers
- Complimentary toiletries
- Coffee/tea facilities





# ECONOMY ONE BEDROOM





## • ECONOMY ONE BEDROOM

- Economy one bedroom apartment one king -size, bed.
- Size of the room - 55 m2
- All rooms with balconies
- Views over the sea
- Non - smoking room
- Complimentary bottled water
- Bathrobes and slippers
- Complimentary toiletries
- Coffee/tea facilities





# ECONOMY STUDIO





## • ECONOMY STUDIO

- Economy studio apartment one king - size, bed.
- Size of the room - 40 m<sup>2</sup>
- All rooms with balconies
- Views over the sea
- Non - smoking room
- Complimentary bottled water
- Bathrobes and slippers
- Complimentary toiletries
- Coffee/tea facilities





# • LOBBY RECEPTION AREA



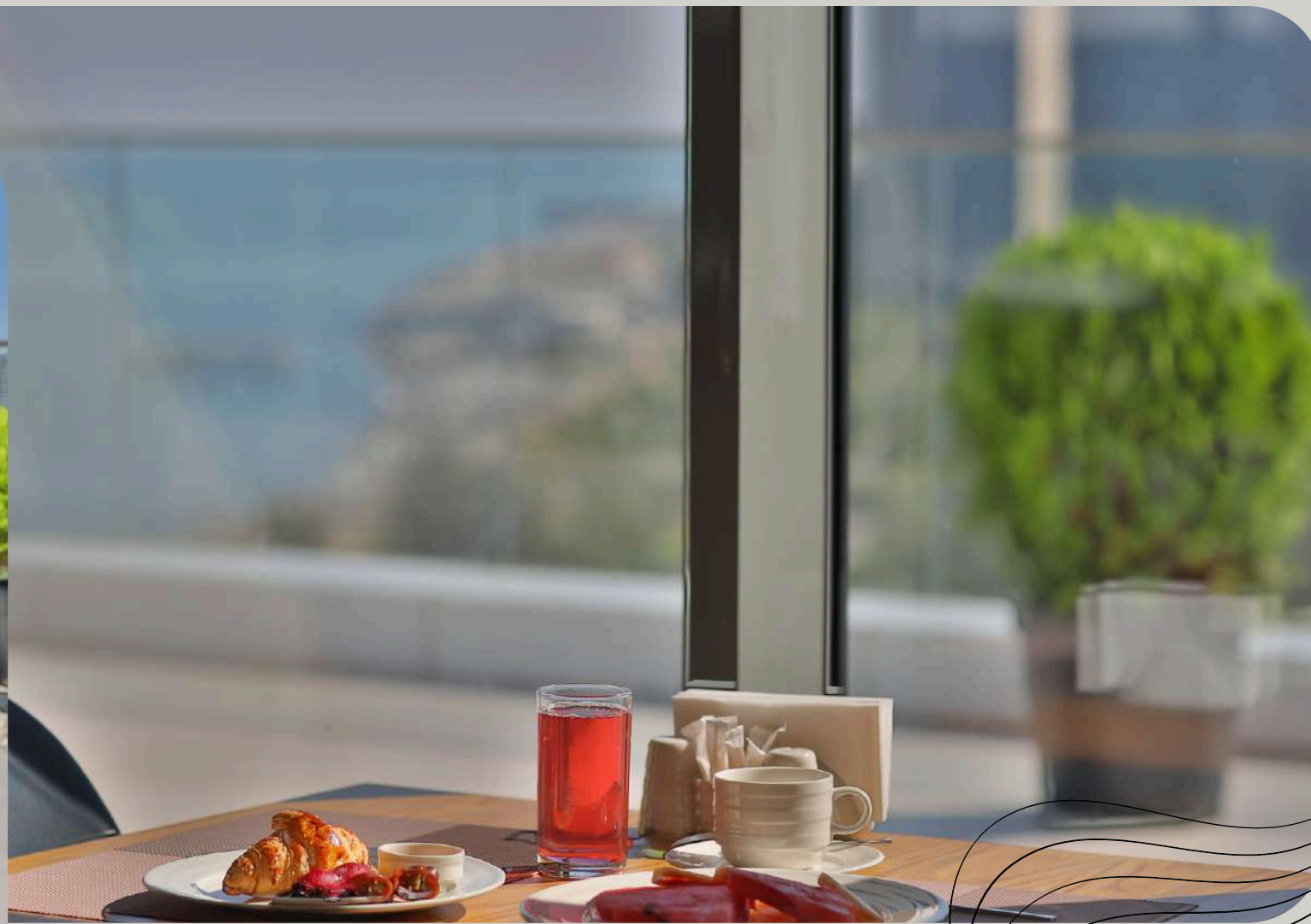


• RESTAURANT BATUMI VIEW TERRACE





- TERRACE







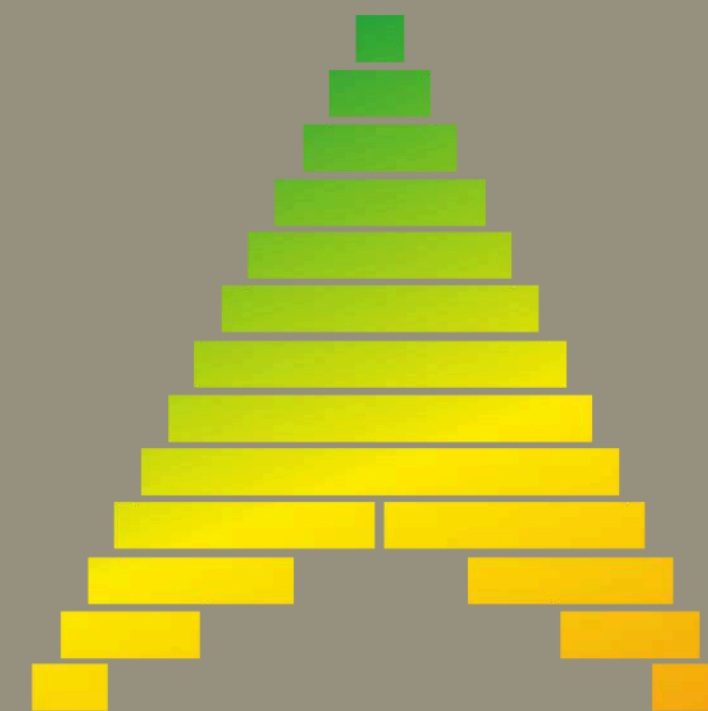
**Tel: +995 422 400 028**

**Mob: +995 577 128 209**

**[www.batumiviewluxury.com](http://www.batumiviewluxury.com)**

**E-mail: [info@batumiviewluxury.com](mailto:info@batumiviewluxury.com)**

**Address: #8 Lech and Maria Kaczynski**



**BATUMI VIEW LUXURY**

