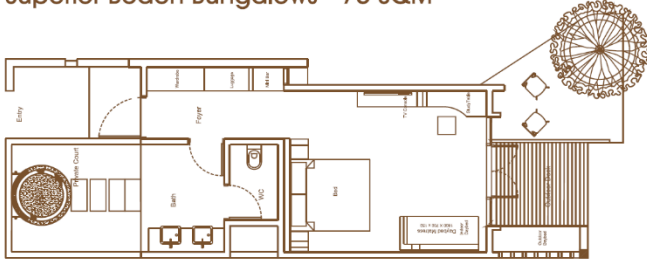
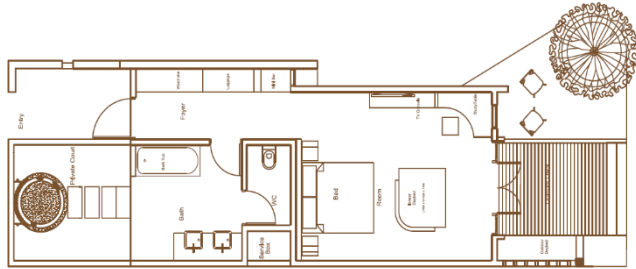


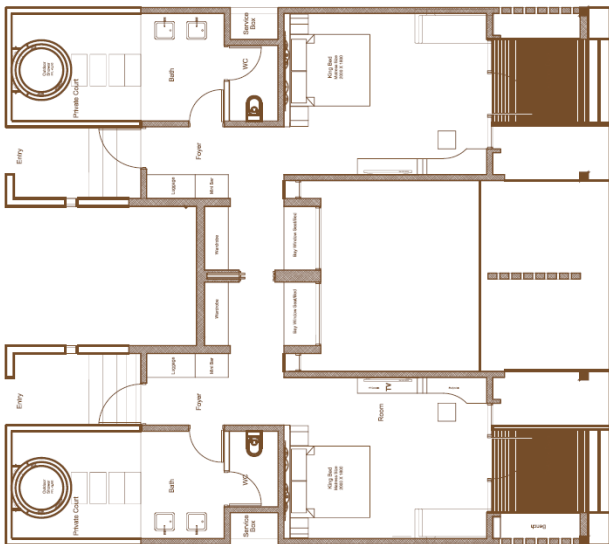
Superior Beach Bungalows - 75 SQM²



Deluxe Beach Bungalow - 89 SQM²



Family Bungalows - 138 SQM²

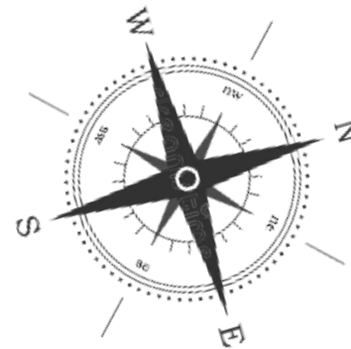


MAP of



LEGEND

- 0. Reception
- 1. Jetty (Arrival)
- 2. Jetty (Diving)
- 3. Main Restaurant
- 4. Spa Treatment Room
- 5. Superior Beach Bungalow
- 6. Deluxe Beach Bungalow
- 7. Family Beach Bungalows
- 8. Gym (Fitness Centre)
- 9. Water Sport Center
- 10. Thila Bar
- 11. Sunset Pool
- 12. Dive School



Welcome to

Hondaafushi Island Resort

Reception

We operate a 24 hours reception. Our receptionists can help you with wake up calls, to make bookings for excursions

Please contact our reception on extension "0"

Main restaurant

Offers a large variety of international and local dishes for meals included in your half board, full board or all-inclusive package. You will have a personal waiter for your entire stay who will ensure you have everything you need.

Breakfast 08:00 – 10:00 / Lunch 12:30 – 14:30 / Dinner 19:30 – 21:30

Sunday - Seafood Night ----- Monday - Maldivian Night

Tuesday -Mexican Night ----- Wednesday -Arabic Night

Thursday - Barbeque Night ----- Friday -Asian Night

Saturday - Italian Night

Casual Wear (Thanks for not wearing swimwear in the restaurant)

Thila Bar

Thila bar offers a variety of drinks, outside seating arrangement overlooking the turquoise blue water and fantastic place for mesmerizing sunset.

Opens daily from 11:00hrs. Till 00:00hrs.

Spa

Choose from our Asian inspired menu of massages and body treatments.

Call us soon to reserve the perfect addition to your island holiday.

Open from 10am to 5pm. Extension 791

Excursions Offered at Hondaafushi

- **Snorkeling Safari** priced at USD 45 per person
- **Night fishing** priced at USD 45 per person
- **Local Island Trip** priced at USD 65 per person
- **Lucky Dolphin Trip** priced at USD 65 per person

Please see our Reception Desk for excursion bookings at least 48 hours in advance.

All excursions are subject to minimum of four person and if weather Permits.

Diving and Watersports

Diving center and watersports available next to reception. Please visit diving center and watersports center for further details.

Opens daily from 08:00hrs to 17:00hrs.

Minibar in the room (On Chargeable Basis)

Please fill and sign in the Minibar List for your order and keep it on your table. Your housekeeping room boy will refill your minibar and charge your room account accordingly.

Meal plans at a glance in our Main Restaurant

Half Board

Includes Breakfast Buffet & Dinner Buffet

Full Board

Includes Breakfast Buffet, Lunch Buffet & Dinner

All Inclusive

Includes Breakfast Buffet, Lunch Buffet and Dinner Buffet

Selection of drinks from All Inclusive Menu.

Everyday evening from 1600 – 1800hrs. Including Hi -Tea/coffee/snacks

After your room check out 1200hrs all consumption will be chargeable.

If you had lunch on the day of your arrival, the lunch on your

Departure day will be chargeable.

Departure Domestic Transfer

Our guests will get a departure letter one day before the departure day with the details of departure flights from Hanimaadhoo International Airport.

Check In / Check Out

Check In is 1400 / Check Out is 1200

Late check out on availability

Key Lose

Room Key US\$30 / Safe key US\$50 will be charged for lost keys.

Safety deposit box

Safe box provided in the room keep your valuable item and lock with your own password. Management will not be responsible any lost in the room.

Fumigation

Being in tropical there are mosquitos, sandflies, we do however fumigate the island on a regular basis using controlled spray.

Kindly keep your toiletries inside the room at 1730 to 1830.

Fishing

As per Maldivian law fishing is not permitted anywhere on or around the island or on the jetty. If you are interested in fishing please contact reception for booking.