



## HOTEL FACT SHEET

Property name : Maple Hotel and Apartment  
Classification of hotel : 4 stars Hotel  
Postal Address : 16 Ton Dan St, Loc Tho Ward, Nha Trang City, Viet Nam  
Telephone : + 84 258 387 9999  
E-mail : [info@maplenhatrang.vn](mailto:info@maplenhatrang.vn)  
Website : [www.maplenhatrang.vn](http://www.maplenhatrang.vn)  
Credit cards Accepted : Visa, Master, American Express, Diners Club, JCB

### **Location & Accommodation**

#### **Welcome to Maple Hotel & Apartment Nha Trang !**

Located in Ton Dan street – the most central street of Nha Trang city, Maple Hotel & Apartment is the newest 4- stars condotel with the latest architecture and it is an outstanding choice for leisure traveler and business trip.

Only two minutes walk to the beach, the guests would be immersed and enjoy the natural beauty of golden sand, blue sea or get themselves into the crowd of the city center at night with many restaurants and beach clubs or get to the famous backpacker area within walking distance. With its strategic location, Maple Hotel & Apartment is near major sightseeing and attractions such as the city plaza, Tram Huong tower, Ponagar temple, as well as entertainment spots such as shopping centers, mud bath, Vinpearl harbor, etc.

Maple Hotel & Apartment has 80 hotel rooms and 38 apartments from one to three bedrooms with exclusive interior design and facilities will meet all your needs. We offer a modern décor, comfortable and vibrant atmosphere to make sure that our guests will be enjoyed a high standard of living and relaxation together with their friends & family.

During the stay, the guests would enjoy many in-house services and facilities such as unique roof-top infinity swimming pool, fitness center, steam bath & sauna, also discover the flavorful western, Asian & Fusion cuisine at the Sky Bar on the top floor. All the facilities are reserved for the guests to experience a breath taking view of Nha Trang city and the beautiful coastline.

### **Transportation:**

- Bus, Train, Private Car, Air Port Pick-up can also be arranged
- 40 km from Cam Ranh Airport, 35 minutes by taxi or bus
- 2km from Nha Trang Railway Station, 5 minutes taxi or car

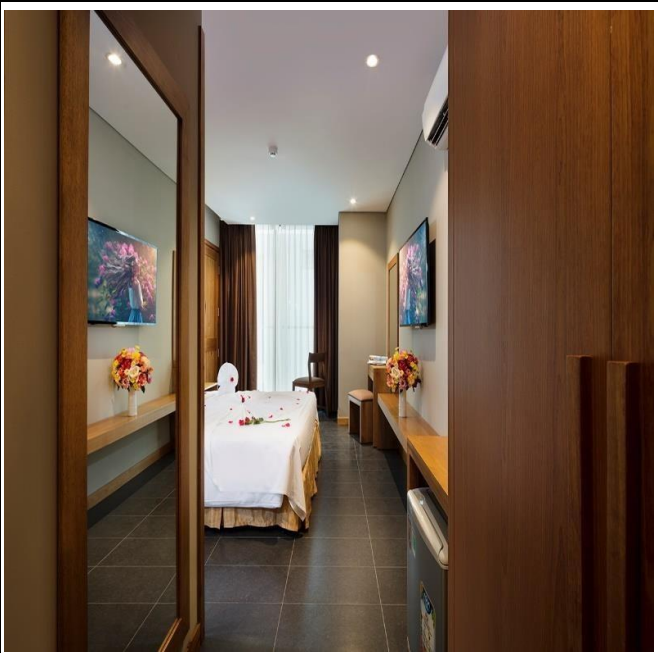
#### **Maple Hotel & Apartment**

Add: 16 Tôn Đản str., Lộc Thọ ward, Nha Trang city, Khánh Hoà province  
Tel No: +84 258 387 9999 –Email: [info@maplenhatrang.vn](mailto:info@maplenhatrang.vn)



## Room Amenity Description

### 1. Deluxe Twin or Double Room ( 2 pax )



Number of room : 41 rooms

(26 Twin rooms + 15 Double rooms )

Type of bed :

+ Double ( 1m8 \*2m )

+ Twin ( 1m2 \* 2m ) \* 2 beds

Room area (m2) : 28m2 Direction/View : No view

All of rooms with balcony

LED television : 49 inch

Electronic Key Card, Wifi, Automatic fire alarm system, Air-conditioning, Mini bar, Personal safety box, Tea/Coffee set, Shower cabin, Hair-dryer, Slippers, bathrobe, working table

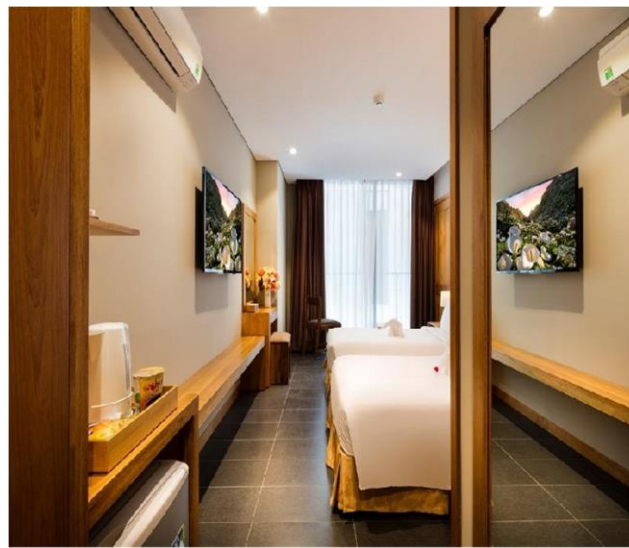
#### Maple Hotel & Apartment

Add: 16 Tôn Đản str., Lộc Thọ ward, Nha Trang city, Khánh Hoà province

Tel No: +84 258 387 9999 –Email: info@maplenhatrang.vn



2 **Family Twin room ( 4 pax )**



Number of room : 35 rooms

Type of bed: Twin (1m4 \* 2m)\*2beds

Room area ( m2) : 28m2

Direction/View : No view

All of rooms with balcony

LED television : 49 inch

Electronic Key Card, Wifi, Automatic fire alarm system, Air- conditioning, Mini bar, Personal safety box, Tea/Coffee set, Shower cabin, Hair-dryer, Slippers, bathrobe, working table

**Maple Hotel & Apartment**

Add: 16 Tôn Đản str., Lộc Thọ ward, Nha Trang city, Khánh Hoà province

Tel No: +84 258 387 9999 –Email: info@maplenhatrang.vn



### 3 Studio city view ( Double ) – 2 pax



Number of room : 3 rooms

Type of bed

Double ( 1,8 m \*2m )

Twin ( 1,2 \* 2m ) \* 2 beds

Room area ( m2 ) : 43 m2 – 49 m2

Direction/View : city view, high floor

All of rooms with balcony

01 sofa bed with king size

01 LED television : 55 inch

Electronic Key Card, Wifi, Automatic fire alarm system, Air-conditioning, Mini bar, Personal safety box, Tea/Coffee set, Shower cabin, Hair-dryer, iron, Slippers, bathrobe, working table, kitchen, washing machine, microwave, super high kettle, rice cooker, cooking utensils, fridge with full size, dinner table with 2 chairs

### 4 Studio sea view ( Twin or Double ) – 2 pax



Number of room : 3 rooms

Type of bed : Double ( 1m8 \*2m )

Room area ( m2 ) : 43 m2

Direction/View : Sea view

All of rooms with balcony 01 sofa bed with king size

01 LED television : 55 inch

Electronic Key Card, Wifi, Automatic fire alarm system, Air-conditioning, Mini bar, Personal safety box, Tea/Coffee set, Shower cabin, Hair-dryer, iron, Slippers, bathrobe, working table, kitchen, washing machine, microwave, super high kettle, rice cooker, cooking utensils, fridge with full size, dinner table with 2 chairs




#### **Maple Hotel & Apartment**

Add: 16 Tôn Đản str., Lộc Thọ ward, Nha Trang city, Khánh Hoà province

Tel No: +84 258 387 9999 –Email: info@maplenhatrang.vn



5 **Executive 01 bedroom Apartment with sea view ( Twin ) – 4 pax**

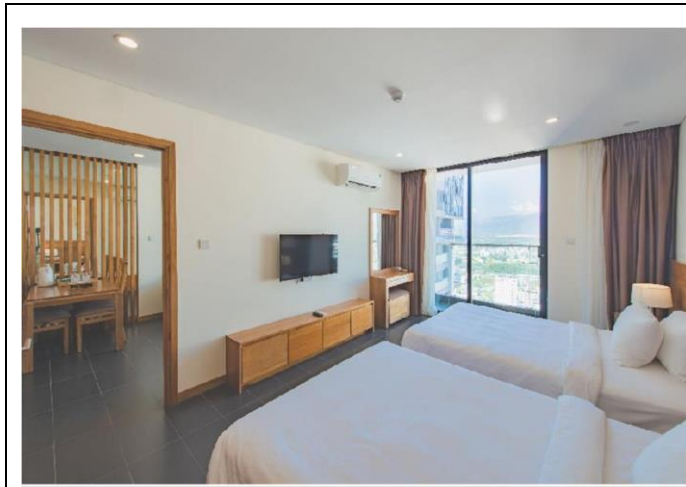
	
	<p>Number of room : 5 rooms</p> <p>Type of bed : Twin ( 1,4 * 2m ) * 2 beds ( m2) : 60 – 62m2 Direction/View : sea view, high floor All of rooms with balcony</p> <p>Living room with 01 sofa bed ( king size ) 02 LED television : 55 inch + 43 inch</p> <p>Electronic Key Card, Wifi, Automatic fire alarm system, Air-conditioning, Mini bar, Personal safety box, Tea/Coffee set, Shower cabin, Hair-dryer, iron, Slippers, bathrobe, working table, kitchen, washing machine, microwave, super high kettle, rice cooker, cooking utensils, fridge with full size, dinner table with 2 chairs</p>

**Maple Hotel & Apartment**

Add: 16 Tôn Đức str., Lộc Thọ ward, Nha Trang city, Khánh Hoà province  
Tel No: +84 258 387 9999 –Email: info@maplenhatrang.vn



6 **Executive 01 bedroom Apartment with city view - 4 pax**



Number of room : 04 rooms

Type of bed : Twin ( 1,4 \* 2m ) \* 2 beds

Room area ( m2) : 60 – 62m2

Direction/View : city view, balcony

Living room with 01 sofa bed ( king size )

02 LED television : 55 inch + 43 inch

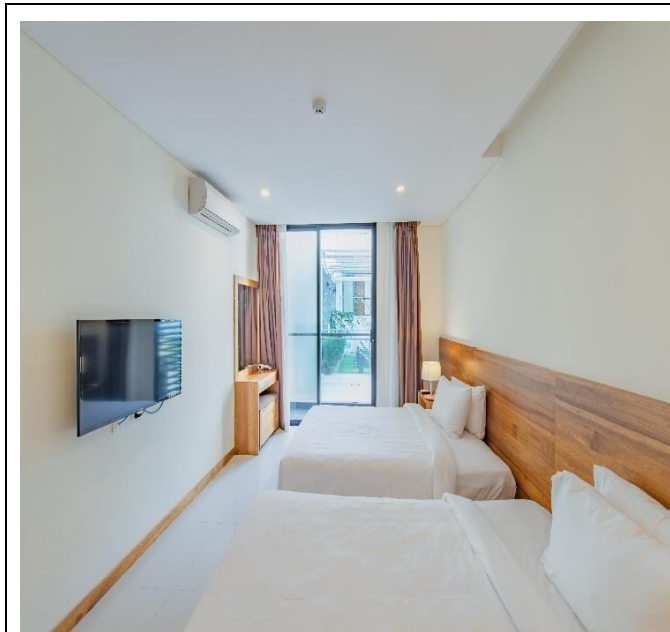
Electronic Key Card, Wifi, Automatic fire alarm system, Air-conditioning, Mini bar, Personal safety box, Tea/Coffee set, Shower cabin, Hair-dryer, iron, Slippers, bathrobe, working table, kitchen, washing machine, microwave, super high kettle, rice cooker, cooking utensils , fridge with full size, dinner table with 2 chairs

**Maple Hotel & Apartment**

Add: 16 Tôn Đản str., Lộc Thọ ward, Nha Trang city, Khánh Hoà province

Tel No: +84 258 387 9999 –Email: info@maplenhatrang.vn

**7 Executive 01 bedroom Apartment with balcony – 4 pax**



Number of room : 04 rooms

Type of bed : Twin ( 1,4 \* 2m ) \* 2 bed

Room area ( m2 ) : 60 – 62m2

Direction/View : No view, balcony Living room with 01 sofa bed ( king size )

02 LED television : 55 inch + 43 inch

Electronic Key Card, Wifi, Automatic fire alarm system, Air- conditioning, Mini bar, Personal safety box, Tea/Coffee set, Shower cabin, Hair-dryer, iron, Slippers, bathrobe, working table, kitchen, washing machine, microwave, super high kettle, rice cooker, cooking utensils , fridge with full size, dinner table with 2 chairs.

**Maple Hotel & Apartment**

Add: 16 Tôn Đản str., Lộc Thọ ward, Nha Trang city, Khánh Hoà province

Tel No: +84 258 387 9999 –Email: info@maplenhatrang.vn

8 Apartment 02 bedroom with sea view – 4 pax



Number of room : 1 room

Type of bed:

02 Bedroom : Double bed (1,6m \* 2m)

Room area ( m2) : 90 – 92m2

Direction/View : sea view, balcony, high floor

Living room with 01 sofa bed ( king size )

02 LED television : 55 inch + 43 inch

Electronic Key Card, Wifi, Automatic fire alarm system, Air- conditioning, Mini bar, Personal safety box, Tea/Coffee set, Shower cabin, Hair-dryer, iron, Slippers, bathrobe, working table, kitchen, washing machine, microwave, super high kettle, rice cooker, cooking utensils , fridge with full size, dinner table with 4 chairs.

**Maple Hotel & Apartment**

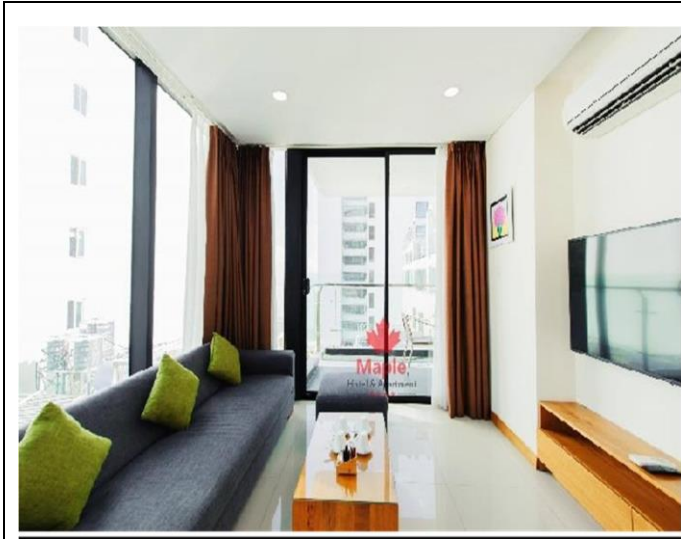
Add: 16 Tôn Đản str., Lộc Thọ ward, Nha Trang city, Khánh Hoà province

Tel No: +84 258 387 9999 –Email: info@maplenhatrang.vn





**9 Apartment 02 bedroom with balcony – 4 pax**



Number of room : 1 room

Type of bed

02 Bedroom : Double bed (1,6m \* 2m)

Room area ( m2) : 90 – 92m2

Direction/View : balcony, high floor

Living room with 01 sofa bed ( king size )

02 LED television : 55 inch + 43 inch

Electronic Key Card, Wifi, Automatic fire alarm system, Air- conditioning, Mini bar, Personal safety box, Tea/Coffee set, Shower cabin, Hair-dryer, iron, Slippers, bathrobe, working table, kitchen, washing machine, microwave, super high kettle, rice cooker, cooking utensils , fridge with full size, dinner table with 4 chairs.

**Maple Hotel & Apartment**

Add: 16 Tôn Dẫn str., Lộc Thọ ward, Nha Trang city, Khánh Hoà province

Tel No: +84 258 387 9999 –Email: info@maplenhatrang.vn



**10 Apartment 03 bedroom with city view - 06 pax**



Number of room : 04 rooms

Type of bed :

03 Double rooms: 1 kingbed room + 2 Double 1m6

Room area ( m2) : 100 m2

Direction/View : city view/partical , balcony

Living room with 01 sofa bed ( king size )

04 LED television : 55 inch + 43 inch \* 3

Electronic Key Card, Wifi, Automatic fire alarm system, Air-conditioning, Mini bar, Personal safety box, Tea/Coffee set, Shower cabin, Hair-dryer, iron, Slippers, bathrobe, working table, kitchen, washing machine, microwave, super high kettle, rice cooker, cooking utensils , fridge with full size, dinner table with 6 chairs.

**Maple Hotel & Apartment**

Add: 16 Tôn Đản str., Lộc Thọ ward, Nha Trang city, Khánh Hoà province

Tel No: +84 258 387 9999 –Email: info@maplenhatrang.vn



**11 Apartment 03 bedroom with city view - 06 pax**



Number of room : 05 rooms

Type of bed

02 Double rooms (1m6 \* 2rooms) + 1 Twin rooms (1m4\*2m\*2bed)

Room area ( m2) : 100 m2

Direction/View : city view/partical , balcony

Living room with 01 sofa bed ( king size )

04 LED television : 55 inch + 43 inch \* 3

Electronic Key Card, Wifi, Automatic fire alarm system, Air-conditioning, Mini bar, Personal safety box, Tea/Coffee set, Shower cabin, Hair-dryer, iron, Slippers, bathrobe, working table, kitchen, washing machine, microwave, super high kettle, rice cooker, cooking utensils , fridge with full size, dinner table with 6 chairs.

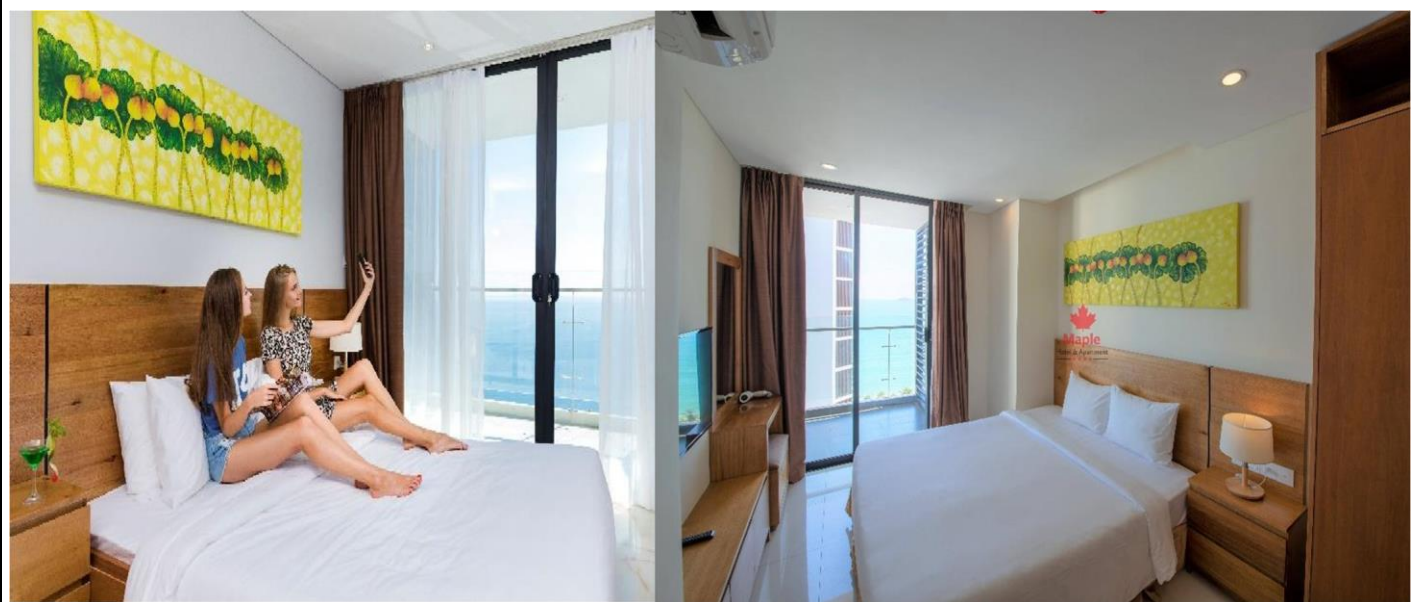
**Maple Hotel & Apartment**

Add: 16 Tôn Đản str., Lộc Thọ ward, Nha Trang city, Khánh Hoà province

Tel No: +84 258 387 9999 –Email: info@maplenhatrang.vn



**12 Apartment 03 bedroom with sea view – 6 pax**



Number of room : 5 rooms

Type of bed

03 Double rooms: 1 kingbed room + 2 Double 1m6

02 Double rooms (1m6 \* 2rooms) + 1 Twin rooms

Room area ( m2) : 100 m2

Direction/View : sea view, high floor, balcony

Living room with 01 sofa bed ( king size )

04 LED television : 55 inch + 43 inch \* 3

Electronic Key Card, Wifi, Automatic fire alarm system, Air- conditioning, Mini bar, Personal safety box, Tea/Coffee set, Shower cabin, Hair-dryer, iron, Slippers, bathrobe, working table, kitchen, washing machine, microwave, super high kettle, rice cooker, cooking utensils , fridge with full size, dinner table with 6 chairs

**Maple Hotel & Apartment**

Add: 16 Tôn Đản str., Lộc Thọ ward, Nha Trang city, Khánh Hoà province

Tel No: +84 258 387 9999 –Email: info@maplenhatrang.vn



**13 Premium Suite with Ocean view – 2 pax**



Number of room : 1 rooms

Type of bed

Bed size : 1 king bed ( Width 2,2m \* Length 2m )

Room area: 78 m<sup>2</sup> Number of room : 1 rooms

Direction/View : Sea view, large balcony

Ocean view, TV, Telephone, Cable channels, Safe, Air conditioning, Sitting area, Walk-in closet, Soundproof, Tile/Marble floor, Dryer, Wardrobe/Closet, Shower, Hairdryer, Bathrobe, Free toiletries, Toilet, Private Bathroom, Slippers, Bidet, Toilet paper, Kitchenette, Refrigerator, Microwave, Kitchen, Electric kettle, Kitchenware, Stovetop, Toaster, Dining table, Wake-up service, Towels/Sheets (extra fee), Towels, Linens, Upper floors accessible by elevator, Entire unit wheelchair accessible, Adapted Bath, Roll-in Shower, Walk-in Shower, Lower Sink, Free WiFi

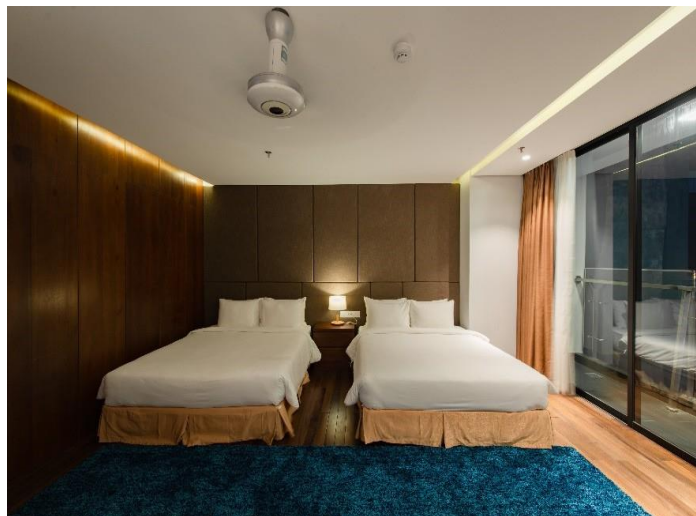
**Maple Hotel & Apartment**

Add: 16 Tôn Đản str., Lộc Thọ ward, Nha Trang city, Khánh Hoà province

Tel No: +84 258 387 9999 –Email: info@maplenhatrang.vn



**14 Sky Villa - 12 Pax**



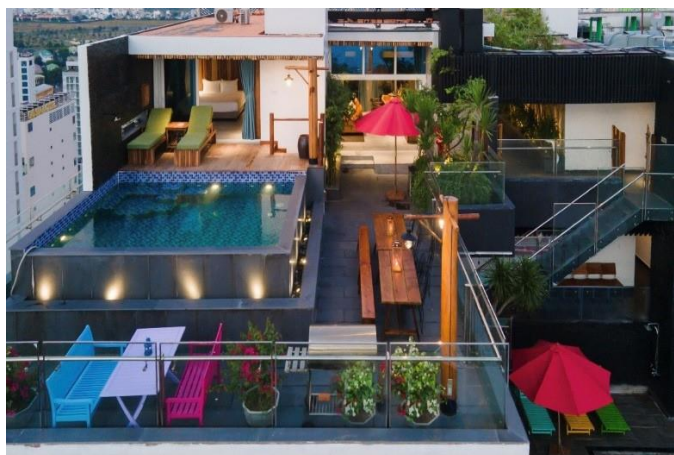
**Key Card**

Room area : 345m2 Number of room : 1 rooms  
 Direction/View : Duplex, Sea view, large balcony  
 Number of bedroom: 04 bedrooms  
 Bedroom 1 : Double Room with King bed inside  
 Bedroom 2 : Twin Room with 02 Double bed  
 Bedroom 3 : Twin Room with 02 Double bed inside  
 Bedroom 4 : Double Room with King bed inside  
 Bed size : King bed ( Width 2,2m \* Length 2m ) Double bed ( Width 1,6m \* Length 2m )  
 Air-conditioning, Automatic fire alarm system, Working table, Curtains, Lamp, Decorative picture, Flat-screen, TV LED, Telephone, Wardrobe/Closet, Clothes rack, 1 Lower Sink, Shower cabin, Roll – in shower, 1Sofa bed, Sitting area, Washing machine, Dining table & high chairs, Kitchen, Stovetop, Kitchenware, Microwave, Refrigerator, Bathtub, Jacuzzi, Wifi, Socket near the bed, Bottle of Water, Tea/Coffee set, Electric kettle, Hairdryer, Mini bar, Personal safety box, Slippers, Trash cans, Towels, Toilet paper, Bathrobe, Toothbrush, Shampoo, Conditioner, Body soap, Shower cap, Electronic

**Maple Hotel & Apartment**

Add: 16 Tôn Đản str., Lộc Thọ ward, Nha Trang city, Khánh Hoà province  
 Tel No: +84 258 387 9999 –Email: info@maplenhatrang.vn

**15 Cabana Villa - 04 Pax**



Room area : 200m2 with private pool and garden

Number of room : 1 room

Direction/View : Sea view

Number of bedroom: 02 bedrooms

Bedroom 1 : Double Room with King bed inside

Bedroom 2 : Double Room with King bed inside

Bed size : King bed ( Width 1,6m \* Length 2m )

Double bed ( Width 1,6m \* Length 2m )

Air-conditioning, Automatic fire alarm system, Working table, Curtains, Lamp, Decorative picture, Flat-screen, TV LED, Telephone, Wardrobe/Closet, Clothes rack, 1 Lower Sink, Shower cabin, Roll – in shower, 1Sofa bed, Sitting area, Washing machine, Dining table & high chairs, Kitchen, Stovetop, Kitchenware, Microwave, Refrigerator, Sauna, Wifi, Socket near the bed, Bottle of Water, Tea/Coffee set, Electric kettle, Hairdryer, Mini bar, Personal safety box, Slippers, Trash cans, Towels, Toilet paper, Bathrobe, Toothbrush, Shampoo, Conditioner, Body soap, Shower cap, Electronic Key Card

**Maple Hotel & Apartment**

Add: 16 Tôn Đản str., Lộc Thọ ward, Nha Trang city, Khánh Hoà province

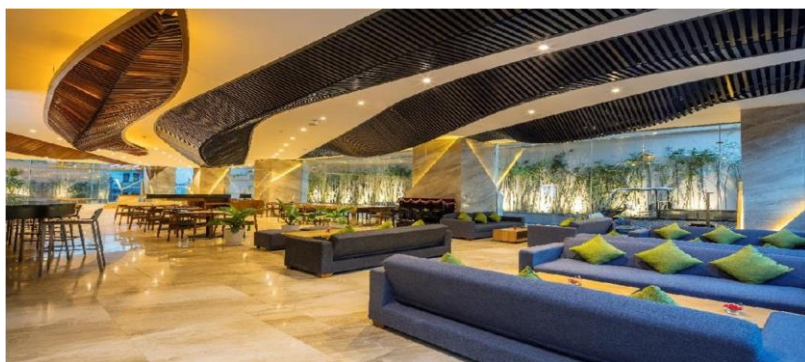
Tel No: +84 258 387 9999 –Email: info@maplenhatrang.vn



### **Hotel Facilities & Services**

- Fitness center
- Laundry service
- Safety deposit box
- Accept major credit card for payment
- Tours and ticket booking
- Free wifi throughout the hotel
- 3 modern elevators
- Doctor on call
- Camera and Fire alarm system
- Meeting room

### **Restaurants & Bars**



#### **Ottawa Café & Bar**

Location: on the ground floor  
Open from 6:00 am to 10:00pm  
Seating capacity: up to 80 pax  
Served: A – la – carte, beverages  
nightly entertainment.



#### **Swimming Pool**

Outdoor Swimming Pool is located on 25th floor, inhouse guests freely come here after a busy day to relax in cool water and refresh in natural air while enjoying sea views.  
Location: on 25th floor  
Open from 6:00 am to 10:00pm

#### **Maple Hotel & Apartment**

Add: 16 Tôn Đản str., Lộc Thọ ward, Nha Trang city, Khánh Hoà province  
Tel No: +84 258 387 9999 –Email: info@maplenhatrang.vn





### **Toronto Restaurant**

Location: 02nd floor  
Open from 6:00 am to 10:00pm  
Seating capacity: up to 140 pax  
Served: Buffet breakfast, A – la – carte lunch & dinner,..



### **Quebec Bar**

Location: on 26th floor  
Open from 6:00 am to 12:00 am  
Seating capacity: 40 pax  
Served: A – la – carte, , beverages  
happy hours late night  
entertainment.



### **Fitness Center**

Our gymnasium is equipped with the latest imported machines and is complimentary for all hotel guests.  
Location: on 25th floor  
Open from 6:00 am to 10:00pm

### **Maple Hotel & Apartment**

Add: 16 Tôn Đản str., Lộc Thọ ward, Nha Trang city, Khánh Hoà province  
Tel No: +84 258 387 9999 –Email: info@maplenhatrang.vn