



THE RITZ-CARLTON

BALI

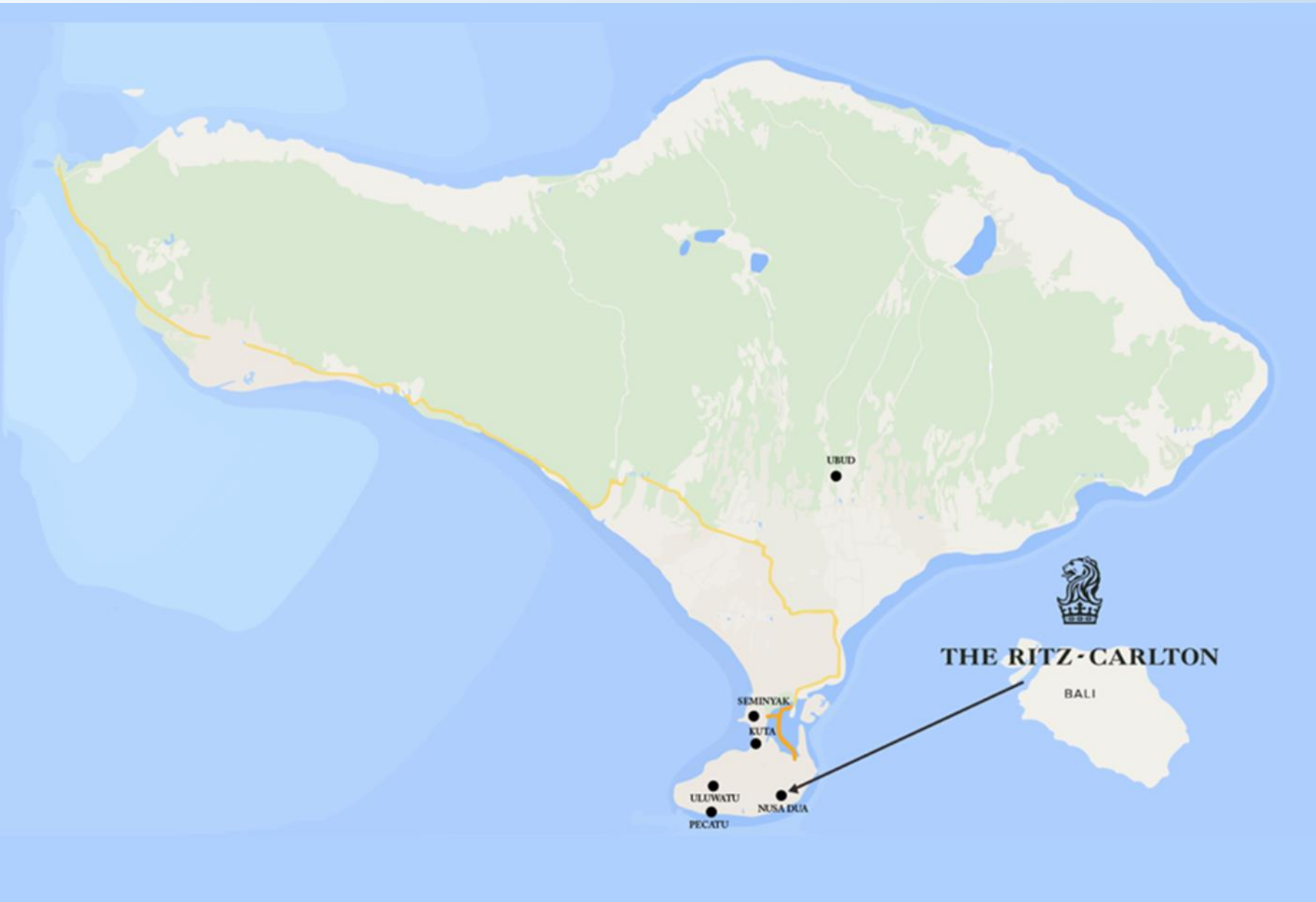
THE RITZ-CARLTON, BALI



BALI, INDONESIA

OVERLOOKING THE
INDIAN OCEAN, OUR
CLIFFSIDE RESORT IN
NUSA DUA, BALI,
OFFERS MODERN
LUXURY WOVEN WITH
BALINESE TRADITION

The beauty and allure of the ocean inspire every detail of The Ritz-Carlton, Bali experience. Our villas have private pools, spacious suites surrounded by lush gardens and breathtaking views. An ocean breeze accompanies dining at the resort.



INSPIRE LIFE'S MOST MEANINGFUL JOURNEYS

Built on sprawling 12.7 hectares of white beachfront and elevated cliff-top settings, The Ritz-Carlton, Bali offers tranquil views over the azure waters of the Indian Ocean, where resort guests can indulge in an idyllic romantic, family, or business interlude.

AI BESPOKE
CELEBRATIONS

SPA &
WELLNESS

LUXURIOUS
ACCOMMODATIONS

TROPICAL
LUSH

#RCMEMORIES
RESORT
EXPERIENCES





RESORT OVERVIEW



SUITES & VILLAS ACCOMMODATION

ROOM CONFIGURATIONS

- 313 combined oceanfront suites and villas with ocean and resort's lush garden view.



SUITES

- 184 lead-in category: The Sawangan Junior Suite at the size of 100 meter squares
- 100 twin beds (two queen beds configuration) available throughout all room categories



VILLAS

- Luxury is elevated at this beachfront Nusa Dua resort with an exclusive offering of 34 villas featuring spacious layouts, Balinese décor and outdoor spaces with garden views or private pools where guests can experience the floating breakfast



ROOM CONFIGURATION PER WING



WING 1						
Room Description	Floor 1	Floor 2	Floor 3	Floor 5	Floor 6	TOTAL
The Sawangan Pool Access Junior Suite King	8					8
The Sawangan Pool Access Junior Suite Double Queen	4					4
The Sawangan Junior Suite King		7	7	7	7	28
The Sawangan Junior Suite Double Queen		5	5	5	5	20
TOTAL	60					

WING 2						
Room Description	Floor 1	Floor 2	Floor 3	Floor 5	Floor 6	TOTAL
The Sawangan Pool Access Junior Suite King	8					8
The Sawangan Pool Access Junior Suite Double Queen	4					4
The Sawangan Junior Suite King		7	7	7	7	28
The Sawangan Junior Suite Double Queen		5	5	5	5	20
TOTAL	60					

ROOM CONFIGURATION PER WING



Wing 5

Wing 3

WING 3						
Room Description	Floor 1	Floor 2	Floor 3	Floor 5	Floor 6	TOTAL
The Sawangan Pool Access Junior Suite King	8					8
The Sawangan Pool Access Junior Suite Double Queen	4					4
The Sawangan Junior Suite King		7	7	7	7	28
The Sawangan Junior Suite Double Queen		5	5	5	5	20
TOTAL				60		

WING 5					
Room Description	Floor 1	Floor 2	Floor 3	Floor 5	TOTAL
The Ritz-Carlton Pool Suite King	4				4
The Ritz-Carlton Pool Suite Double Queen	1				1
The Ritz-Carlton Suite King		6	6		12
The Ritz-Carlton Suite Double Queen		1	1		2
The Ritz-Carlton Suite Two Bedroom Double	1				1
The Sky Villa One Bedroom King				1	1
The Sky Villa Two Bedroom King & Double Queen				2	2
TOTAL				23	

ROOM CONFIGURATION PER WING



WING 6						
Room Description	Floor 1	Floor 2	Floor 3	Floor 5	Floor 6	TOTAL
The Sawangan Pool Access Junior Suite King	6					6
The Sawangan Pool Access Junior Suite Double Queen	4					4
The Sawangan Junior Suite King		6	6	6	6	24
The Sawangan Junior Suite Double Queen		4	4	4	4	16
The Ritz-Carlton Pool Suite King	2					2
The Ritz-Carlton Suite King		2	2	2	2	8
TOTAL				60		

WING 8					
Room Description	Floor 1	Floor 2	Floor 3	Floor 5	TOTAL
The Ritz-Carlton Pool Suite King	3				3
The Ritz-Carlton Suite King		6	6		12
The Ritz-Carlton Suite Double Queen		1	1		2
The Ritz-Carlton Suite Two Bedroom Double Queen	2				2
The Sky Villa One Bedroom King				1	1
The Sky Villa Two Bedroom King & Double Queen				2	2
TOTAL				22	

ROOM CONFIGURATION PER BED TYPE

ROOM TYPE	ROOMS AVAILABLE	KING BED	TWIN BED
The Sawangan Junior Suite	184	108	76
The Sawangan Junior Suite Lagoon Access	46	30	16
The Ritz-Carlton Suite	36	32	4
The Ritz-Carlton Suite Lagoon Access	10	9	1
The Pavilion Signature Suite with Pool Access	18	12	6
Ritz-Carlton Suite Two Bedroom with Lagoon Access	3	3	0
The Garden Villa with Private Pool (One Bedroom)	4	4	0
The Cliff Villa with Private Pool (One Bedroom)	3	3	0
The Ocean Cliff Villa with Private Pool (One Bedroom)	1	1	0
The Sky Villa with Private Pool (One Bedroom)	2	2	0
The Sky Villa with Private Pool (Two Bedroom)	4	4	0
The Cliff Villa with Private Pool (Three Bedroom)	1	1	0
The Oceanfront Villa with Private Pool/ Presidential Suite (Three Bedroom)	1	1	0
TOTAL	313	210	103

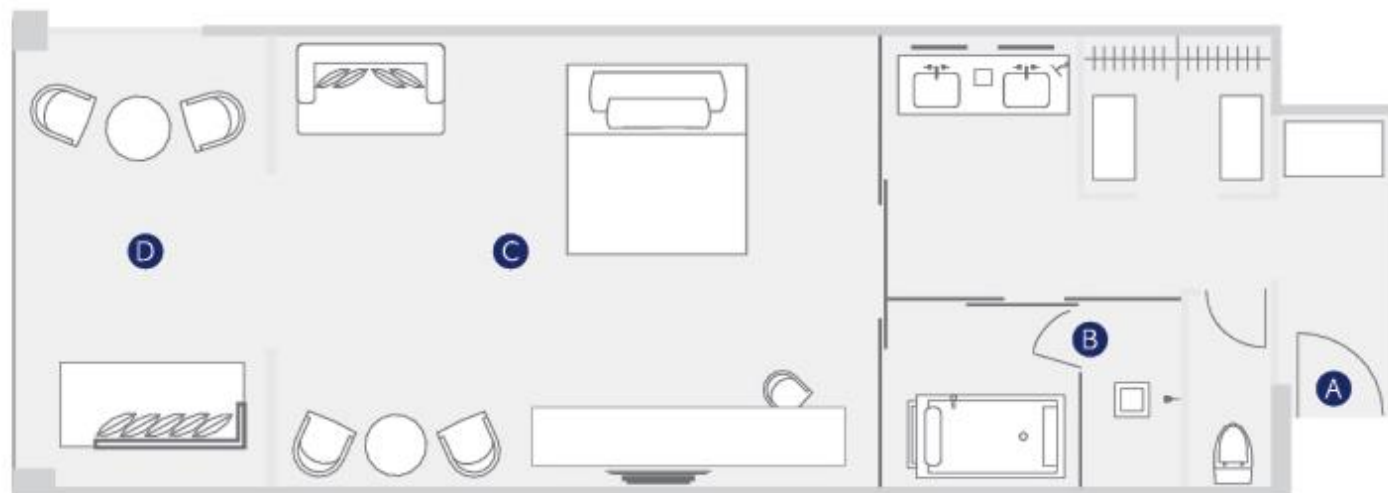
THE SAWANGAN JUNIOR SUITE

184 UNITS, SIZE 1076 SQFT | 100 SQM

Sawangan Junior suite is a spacious and luxurious suite with the choice of either one king bed or two queen beds. It includes:

- a spacious living area for in-room relaxation
- a luxury bathroom with double vanity sinks
- oversized bathtub
- a separate rain shower
- dressing area with luxury robes and indulgent amenities
- a large private balcony with a daybed

For families, a crib or rollaway bed is available upon request, along with the option of connecting rooms for added convenience.



A ENTRANCE
B BATHROOM
C BEDROOM
D BALCONY

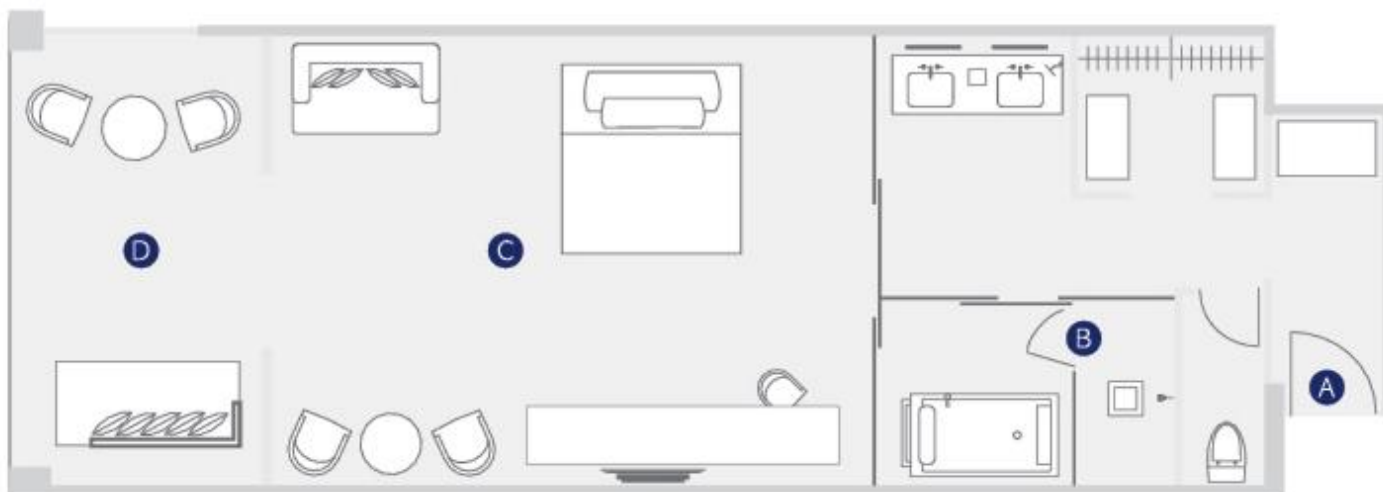
THE SAWANGAN JUNIOR SUITE WITH LAGOON ACCESS

46 UNITS, SIZE 1076 SQFT | 100 SQM

Sawangan Junior Suite with Pool Access is available with either one king bed or two queen beds. The suite includes:

- direct access to a 27-square-meter lagoon pool from the private terrace
- a spacious living area with sofas and table for in-room relaxation
- double vanity sinks
- oversized bathtub
- a separate rain shower
- separate dressing area

For families, a crib or rollaway bed is available upon request along with the option of connecting rooms for added convenience.



A ENTRANCE
B BATHROOM
C BEDROOM
D BALCONY

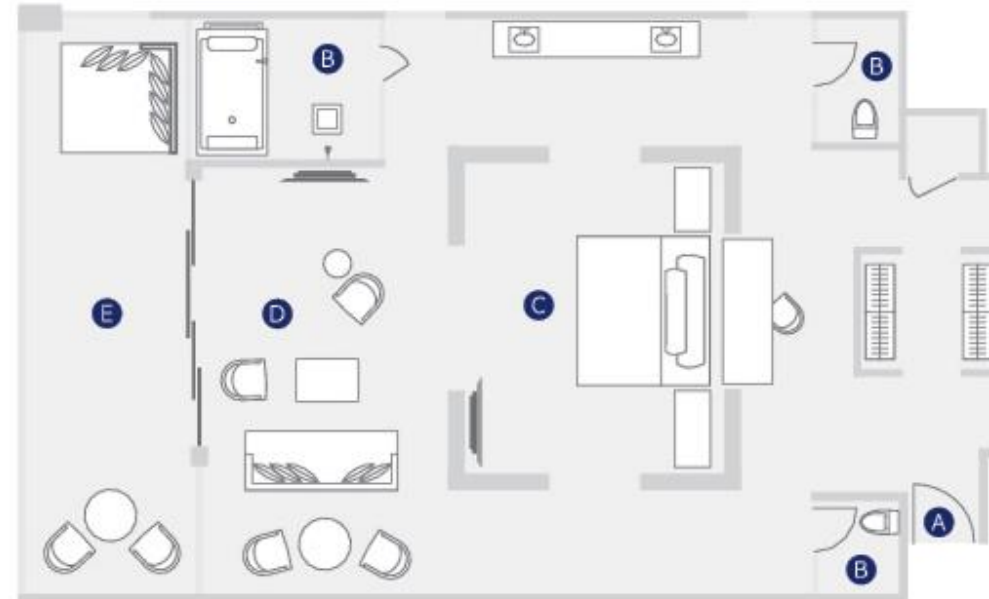
THE RITZ-CARLTON SUITES

36 UNITS, SIZE 1560 SQFT | 145 SQM

The Ritz-Carlton Suites are designed to provide guests with a truly luxurious, spacious, modern suite experience. With either one super king bed or two queen beds, the suite also has:

- a separate and lavishly appointed living and dining area
- a large bathroom that features double vanity sinks
- separate rain shower
- dressing room
- a large bathtub
- wide and spacious private balcony

For families, a crib or rollaway bed is available upon request along with the option of connecting rooms for added convenience.



A ENTRANCE
B DINING
C BATHROOM
D LOUNGE
E BEDROOM
F BALCONY

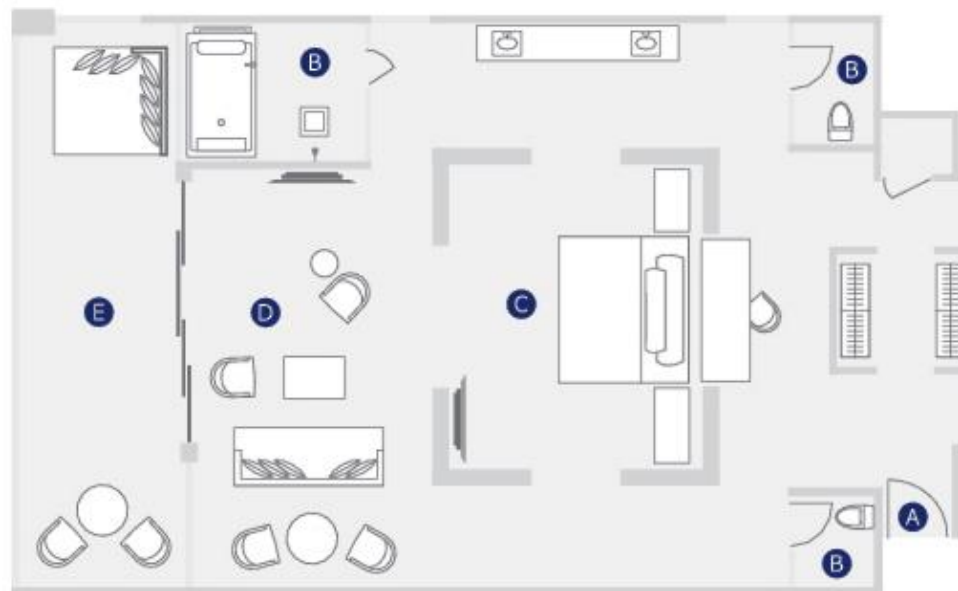
THE RITZ-CARLTON SUITES WITH LAGOON ACCESS

7 UNITS, SIZE 1560 SQFT | 145 SQM

The Ritz-Carlton Suites with Pool Access are designed to provide guests with a truly luxurious, spacious, modern suite experience. With either one super king bed or two queen beds, the suite also has:

- direct access to a 43-square-meter lagoon pool
- a separate and lavishly appointed living and dining area
- a large bathroom that features double vanity sinks
- separate rain shower
- dressing room
- a large bathtub
- wide and spacious private balcony

For families, a crib or rollaway bed is available upon request along with the option of connecting rooms for added convenience.



A ENTRANCE
B DINING
C BATHROOM
D LOUNGE
E BEDROOM
F BALCONY

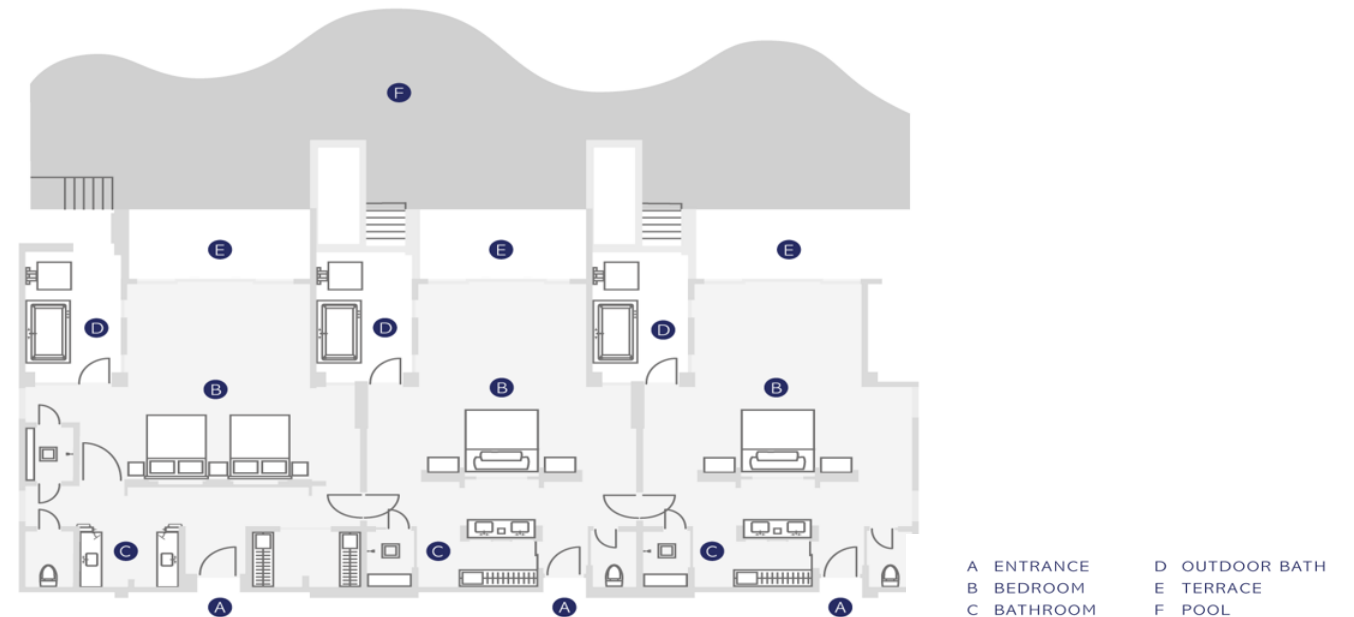
THE PAVILION SIGNATURE SUITE WITH POOL ACCESS

18 UNITS, SIZE 1291 SQFT | 120 SQM

Seamlessly combining contemporary indoor and outdoor tropical island living, the luxurious one-bedroom pavilion villa invites guests to relax and indulge in a tropical getaway. With a spacious bedroom featuring a typical Balinese high ceiling and either a super king bed or two queen beds for indulgent lazing.

The Pavilion Signature Suite with Pool Access features:

- direct access to a 38-square-meter meters pool
- expansive private veranda with an oversized daybed
- semi-outdoor bathroom with oversized tub and shower
- indoor separate shower
- double vanity sinks



THE GARDEN VILLA WITH PRIVATE POOL (ONE BEDROOM)

4 UNITS, SIZE 3874 SQFT | 360 SQM

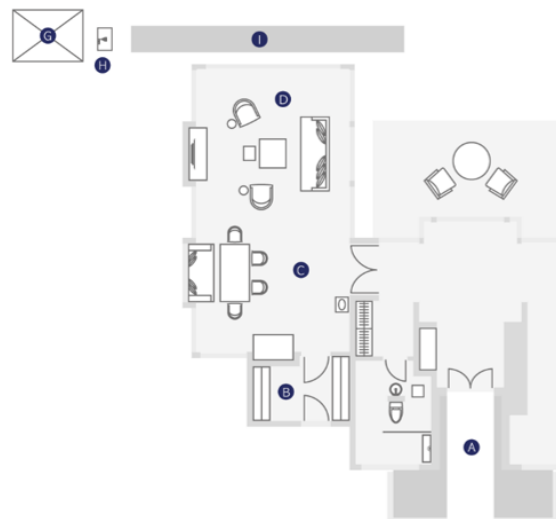
Set over two levels, the Garden Villa with Private Pool features Balinese accents blended beautifully with the light woods, high ceiling, and modern interior design. The master bedroom, with a 2.4 meter super king bed, daybed, dressing area and elegant writing spaces, oozes contemporary elegance off-set by full-length windows that allow guests to bask in the delightful view.

The villa includes:

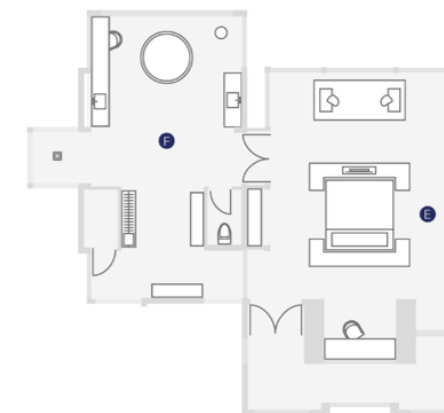
- 33-square-meter swimming pool with an outdoor shower
- Marble bathroom features an oversized soaking tub and separate rain shower
- Dual vanities and walk-in closet
- Relaxed living and dining areas
- Spacious terrace with sun loungers and a stylish Balinese pavilion



GROUND FLOOR



FIRST FLOOR



A ENTRANCE
B KITCHEN
C DINING
D LOUNGE
E BEDROOM
F BATHROOM
G GAZEBO
H OUTDOOR SHOWER
I POOL

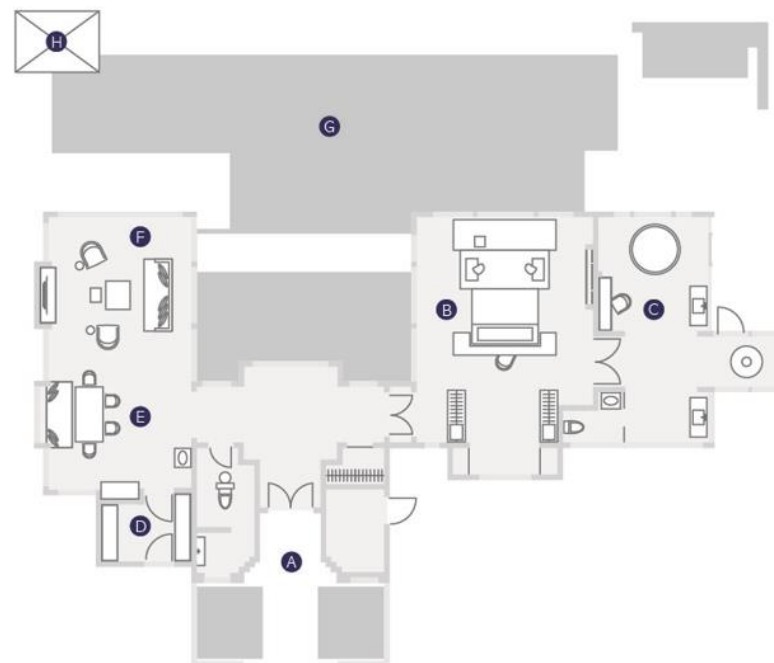
THE CLIFF VILLA WITH PRIVATE POOL (ONE BEDROOM)

3 UNITS, SIZE 3024 SQ FT | 281 SQM

Furnished to the highest standards, these beautifully appointed one bedroom villas feature adjoining living and dining areas with large windows lighting up the entire space with natural daylight. The pool area is the ideal retreat for private sunbathing and ultimate relaxation complete with lush garden and magnificent views.

The villa includes:

- a spacious terrace
- 77 square meters swimming pool
- bathroom with vanity sinks
- separate rain shower
- oversized soaking tub
- outdoor shower
- sun loungers
- stone-pillared Balinese-style gazebo



A ENTRANCE	D KITCHEN	G POOL
B BEDROOM	E DINING	H GAZEBO
C BATHROOM	F LOUNGE	

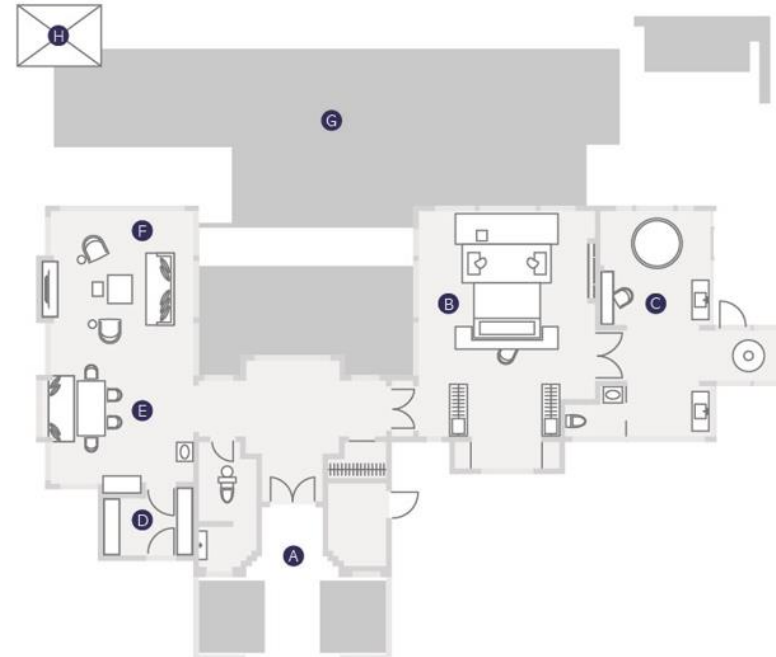
THE OCEAN CLIFF VILLA WITH PRIVATE POOL (ONE BEDROOM)

1 UNIT, SIZE 3024 SQ FT | 281 SQM

Furnished to the highest standards, these beautifully appointed one bedroom villas feature adjoining living and dining areas with large windows lighting up the entire space with natural daylight. The pool area is the ideal retreat for private sunbathing and ultimate relaxation complete with lush garden and magnificent views.

The villa includes:

- a spacious terrace
- 77 square meters swimming pool
- bathroom with vanity sinks
- separate rain shower
- oversized soaking tub
- outdoor shower
- sun loungers
- stone-pillared Balinese-style gazebo



A ENTRANCE	D KITCHEN	G POOL
B BEDROOM	E DINING	H GAZEBO
C BATHROOM	F LOUNGE	

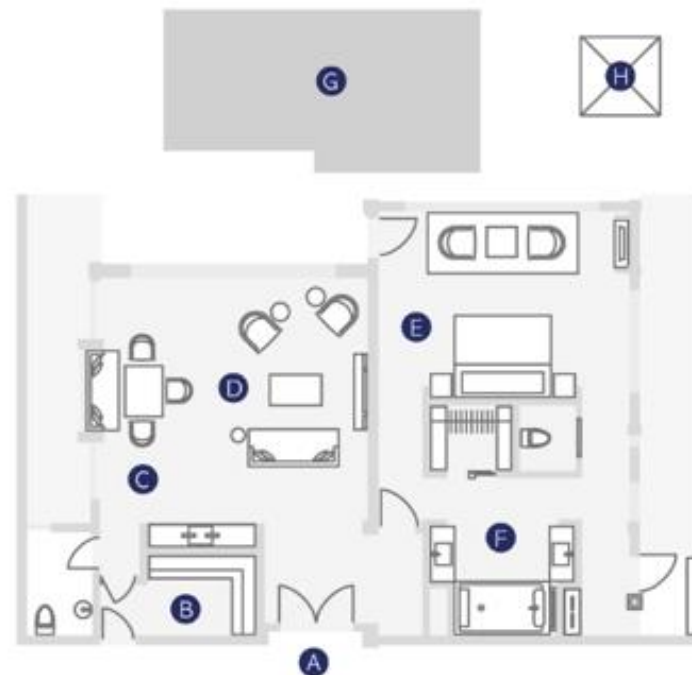
THE SKY VILLA WITH PRIVATE POOL (ONE BEDROOM)

2 UNITS, SIZE 1711 SQFT | 159 SQM

The Sky Villa is set on the highest floor of the suite buildings facing the Indian Ocean. Using natural light and colors to great effect, with local art accents and luxury furnishings, the spacious bedroom offers spectacular views through the large window allowing guests to lie in bed and feel as though they are floating in the clouds.

Sky Villa features:

- 15-square-meter swimming pool
- loungers and contemporary pavilion a
- a separate living area includes ample dining and relaxing space
- marble and mirrored bathroom with double vanities
- an oversized bathtub
- a separate rain shower



A ENTRANCE C DINING E BEDROOM G POOL
B KITCHEN D LOUNGE F BATHROOM H GAZEBO

THE SKY VILLA WITH PRIVATE POOL (TWO BEDROOM)

4 UNITS, SIZE 2776 SQFT | 258 SQM

The Sky Villa is set on the highest floor of the suite buildings facing the Indian Ocean. Using natural light and colors to great effect, with local art accents and luxury furnishings, the spacious bedroom offers spectacular views through the large window allowing guests to lie in bed and feel as though they are floating in the clouds.

Sky Villa features:

- Two bedrooms with King size bed and Twin size bed
- 15-square-meter swimming pool
- loungers and contemporary pavilion a
- a separate living area includes ample dining and relaxing space
- marble and mirrored bathroom with double vanities
- an oversized bathtub
- a separate rain shower



THE CLIFF VILLA WITH PRIVATE POOL (THREE BEDROOM)

1 UNIT, SIZE 6779 SQFT | 630 SQM

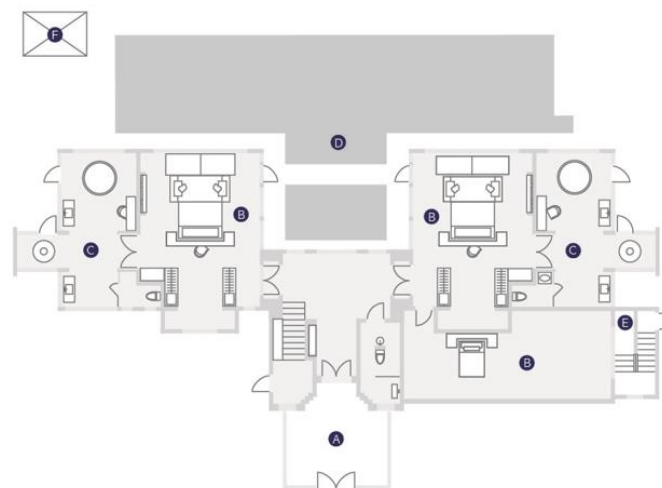
Set in beautifully manicured and private tropical grounds, The Ritz-Carlton Cliff Villa is a haven of sophistication and opulence. With two super king bedrooms and a third bedroom with double queen, this stately and private two-story residence is also the perfect setting for intimate parties or private events.

The villa features:

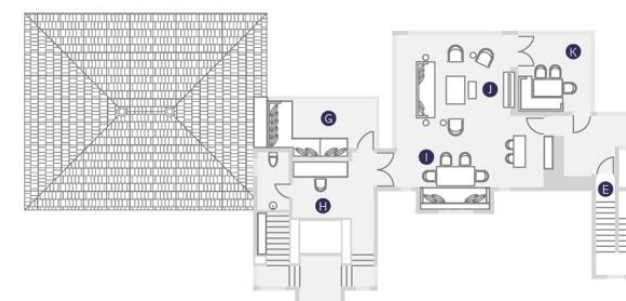
- direct access to the large 138-square-meter infinity pool
- sun loungers and Balinese pavilion
- separate dressing area
- bathrooms with dual vanities
- separate rain shower
- oversized soaking tubs
- indoor and al fresco dining areas
- a large open-air living room with floor-to-ceiling windows for spectacular views



GROUND FLOOR



FIRST FLOOR



- | | | | |
|------------|------------------|-----------------|------------------|
| A ENTRANCE | D POOL | G VERANDA | J LOUNGE |
| B BEDROOM | E EMERGENCY EXIT | H STUDY | K OUTDOOR DINING |
| C BATHROOM | F GAZEBO | I INDOOR DINING | |

THE RITZ-CARLTON OCEANFRONT VILLA (THREE BEDROOM)

1 UNIT, SIZE 7295 SQFT | 678 SQM

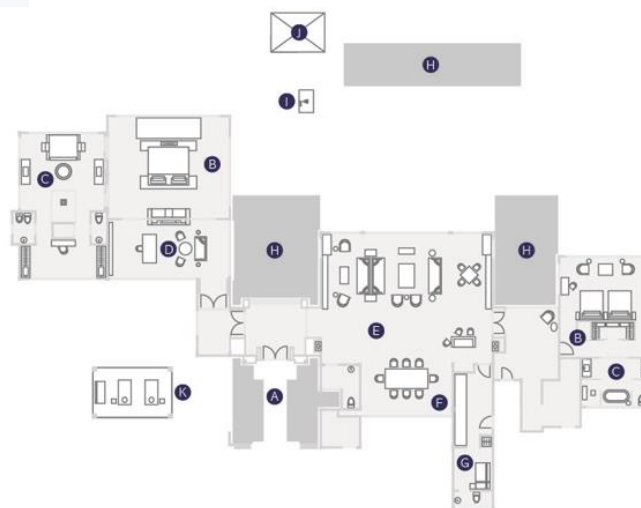
The luxurious three-bedroom oceanfront villa is the ultimate beachside residence. It enjoys direct access to the pristine beach offering gorgeous views over the Indian Ocean.

The villa includes:

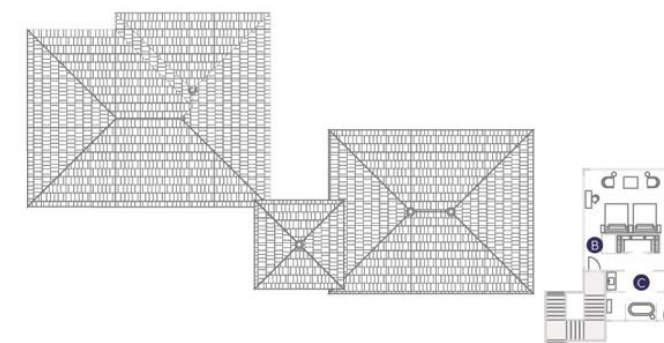
- an oversized Balinese four-foster bed with a comfortable net in the master bedroom
- bathroom features a marble walk-in tub with stunning ocean views
- two other bedrooms are situated in a two-story area, one on each floor, for added privacy
- marbled bathrooms with bathtub, rain shower, dressing area and twin vanities
- direct access to the 140-square-meter infinity pool with a large terrace
- lush garden with an outdoor shower, sun loungers, and contemporary Balinese pavilion



GROUND FLOOR



FIRST FLOOR



A ENTRANCE	D STUDY	G BUTLER ROOM	J GAZEBO
B BEDROOM	E LOUNGE	H POOL	K SPA PAVILION
C BATHROOM	F DINING	I OUTDOOR SHOWER	



**DINING
EXPERIENCES**

BEJANA

Named after a traditional Indonesia cooking pot, the dinner-only restaurant serves a superb selection of classic Indonesian cuisine.

An elegant and richly decorated dining space also features an expansive outdoor dining terrace offering stunning views over the Indian Ocean.

Within the restaurant is the Culinary Cave, a space dedicated to culinary learning with large colonial-style table.



THE BEACH GRILL

With a choice of stylish indoor seating offering amazing view over the ocean or outdoor under shaded walkway and sofa-style seating on the lush lawn directly adjacent to the beach.

The Beach Grill is open for lunch and dinner. Featuring premium meats and fresh seafood, the menu is designed to entice every palates.



BREEZES

Adjacent to the beach and pool, it offers guests a refined collection of classic and contemporary handcrafted cocktails, as well as carefully curated Old and New World wines.

The design is based upon a traditional fisherman's hut and through the day serves appetizing beachside comfort foods and delicious range of tapas.



SENSES

Breakfast restaurant that offers an extensive menu, including a wide-reaching international breakfast buffet featuring a variety of different food stations, from Western, Chinese, Indonesian, egg station and healthy options. With indoor and outdoor seating, including a gazebo for a more intimate breakfast.



THE RITZ-CARLTON LOUNGE AND BAR

Located above Senses, it is an all-day dining venue serving drinks, light bites and the famous Ritz-Carlton afternoon tea.

As the evening draws in, it magically transforms into an enchanting spot to enjoy a pre-dinner cocktail or nightcap.

Of the many highlights, the Afternoon Tea is sublime, served with a selection of premium teas and coffees.



A wide-angle photograph of a tropical resort at sunset. In the foreground, a large, clear blue swimming pool reflects the sky and the sun. The pool is bordered by a wooden deck with numerous lounge chairs and white patio umbrellas. In the background, a sandy beach leads to the ocean under a blue sky with scattered white clouds. Several tall palm trees are scattered throughout the scene, some in the foreground and some in the distance. The overall atmosphere is serene and luxurious.

MAIN FACILITIES

MISSONI





RITZ-KIDS

Discover the many wonderful kid-friendly activities at The Ritz-Carlton, Bali. Created to ensure the Bali family vacation of a lifetime, the Ritz Kids resort experience taps into little ones' innate curiosity by introducing them to the natural wonders and cultural traditions of Bali. This immersive resort club provides exciting, kid-friendly things to do on and around the beach for kids of all ages. Activities including exploring coral reefs, sea turtle preservation and forests, Night Safaris and more.





EVOLVED SAFARI TENT

THE RITZ-CARLTON SPA, BALI

With four Spa villas and ten treatment rooms designed to ensure total privacy, a rich Balinese experience awaits as guests are immersed in a therapeutic oasis of bliss. The Ritz-Carlton Spa harnesses the dramatic power of the sea to create a sanctuary of renewal and relaxation.

Based on time-honored traditional Balinese therapies and rituals, the signature treatments utilize two of the Indian Ocean's most natural products: seaweed and pearl.

Guests are also invited to experience our nurturing Hydro-Vital Pool where you can be guided through the Hydro-Vital Circuit by one of our therapists or relax, unwind and indulge at your own pace.





GYM



MAIN POOL



BEACH

ACTIVITIES & EXPERIENCES





YOGA



SOUL PURIFICATION



MARKET TO TABLE – CULINARY CAVE

THANK YOU



THE RITZ-CARLTON

BALI

