

capri  
BY FRASER  
hotel residences  
BUKIT BINTANG / MALAYSIA

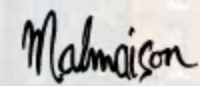
**Capri by Fraser, Bukit Bintang / Malaysia**

  
**FRASERS**  
HOSPITALITY

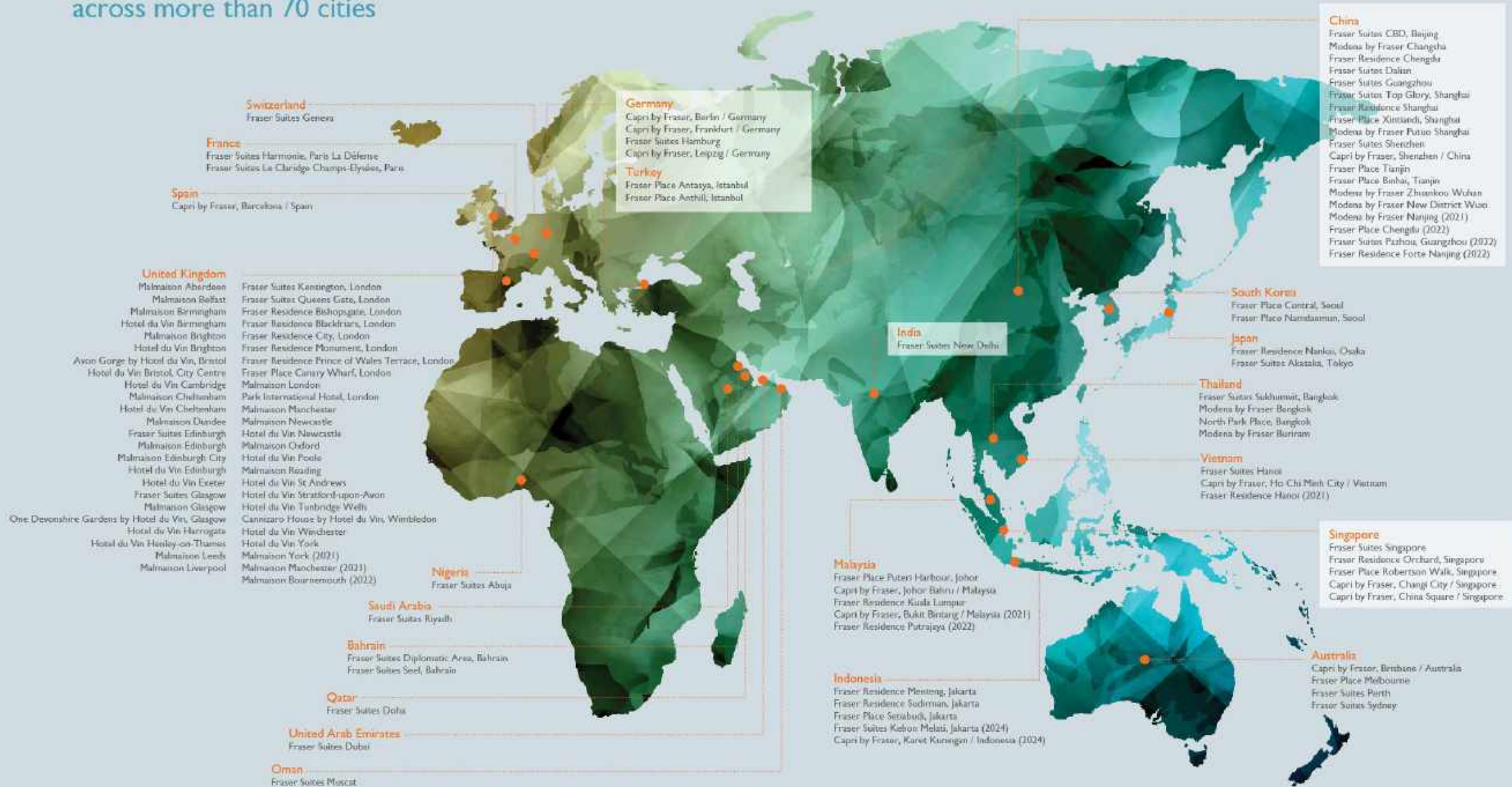
# Frasers Hospitality

A member of Frasers Property Group, Frasers Hospitality is a global hospitality operator with Gold-Standard serviced apartments, hotel residences and boutique lifestyle hotels across Australia, Southeast Asia, North Asia, Middle East, Africa, Europe and the United Kingdom.

With numerous award adding to its achievements, Frasers Hospitality continues to make its mark on the international hospitality scene with its strong vision for growth and exceptional service offerings.



# The Fraser Collection spans over 140 properties across more than 70 cities



# The Capri Cues- 4 Pillars of Capri's DNA



## THE DEN

This multifunctional lobby acts as the heart of Capri, a place where travellers can come together to eat, drink, work, socialise, and more.

## ART & DESIGN

The stylish flourishes in our properties – from large installations to tiny details – are where we show the spirit of Capri, and how we inspire our guests to join our party.

## LOCAL INTEGRATION

Bringing each city into our hotels through collaboration and co-branding is how we create the soul of Capri. Since each city is different, the soul of each property is too.

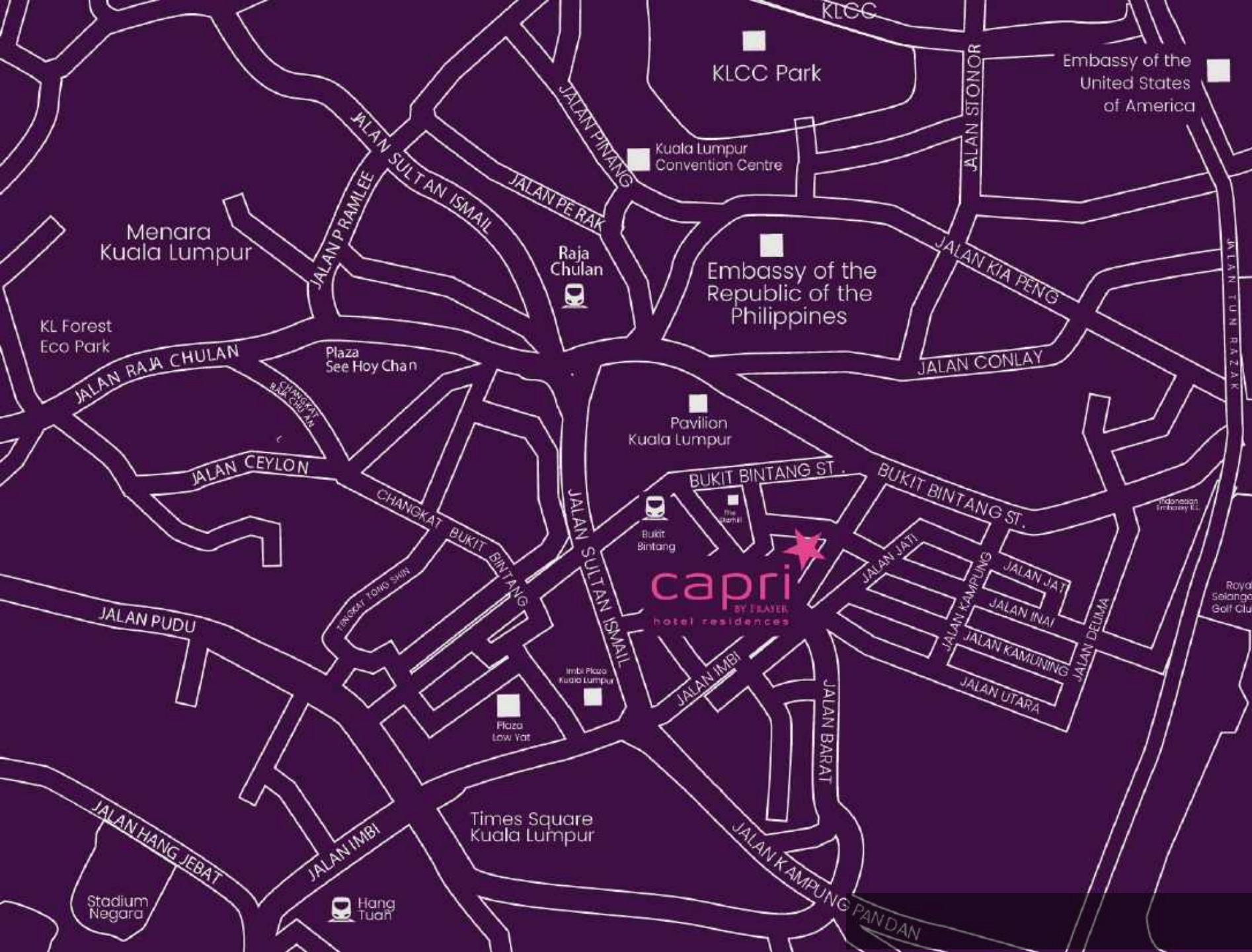
## CONNECTIVITY

This is where we work, play, live and share, so we know that connectivity is key. Through seamless technology throughout the property, we highlight the pulse of Capri.



## Location

FAÇADE (NIGHT)



No. 160, Jalan Imbi, Bukit Bintang  
55100 Kuala Lumpur, Malaysia.



Capri by Fraser, Bukit Bintang

Location

\*Not to scale

# Airport Details

---



## **Distance to/from Kuala Lumpur International Airport (KLIA)**

From KLIA : 55 Minutes | 59KM

To KLIA : 53 Minutes | 58KM

## **Airport Transfer**

Airport Transfer by hotel is provided upon request

\*One-way transfer to airport only

## **Public Transportation to KLIA**

MRT Bukit Bintang Station – KL Central (exchange to ERL line) – KLIA

Approx. 1 Hour 30 Minutes



capri

WISMA IMBI

Wisma IMBI Hotel Sdn Bhd

Sur & Smit Exchange

5 to 10

MTRX

FAÇADE (NIGHT)





## Facilities & Services

FAÇADE (DAY)

# Facilities & Services

---



## Facilities

- Automated Car Park
- 5-category rooms
- Pow Wow (Premier Lounge)
- Fully-equipped 24-hours Gym
- Saltwater Pool and Kids' Pool
- Sauna
- Spin & Play  
(Laundrette and Playroom)
- Pod (Meeting Rooms)

---

## Services

- 24/7 Reception, Concierge and Security services
- High-speed Internet access
- Daily Breakfast
- Daily housekeeping services
- Scheduled shuttle service to key business and shopping districts

---

## Dining

- All-day dining outlet (The Den)
- Bar @ The Den
- Room Service & In-room dining

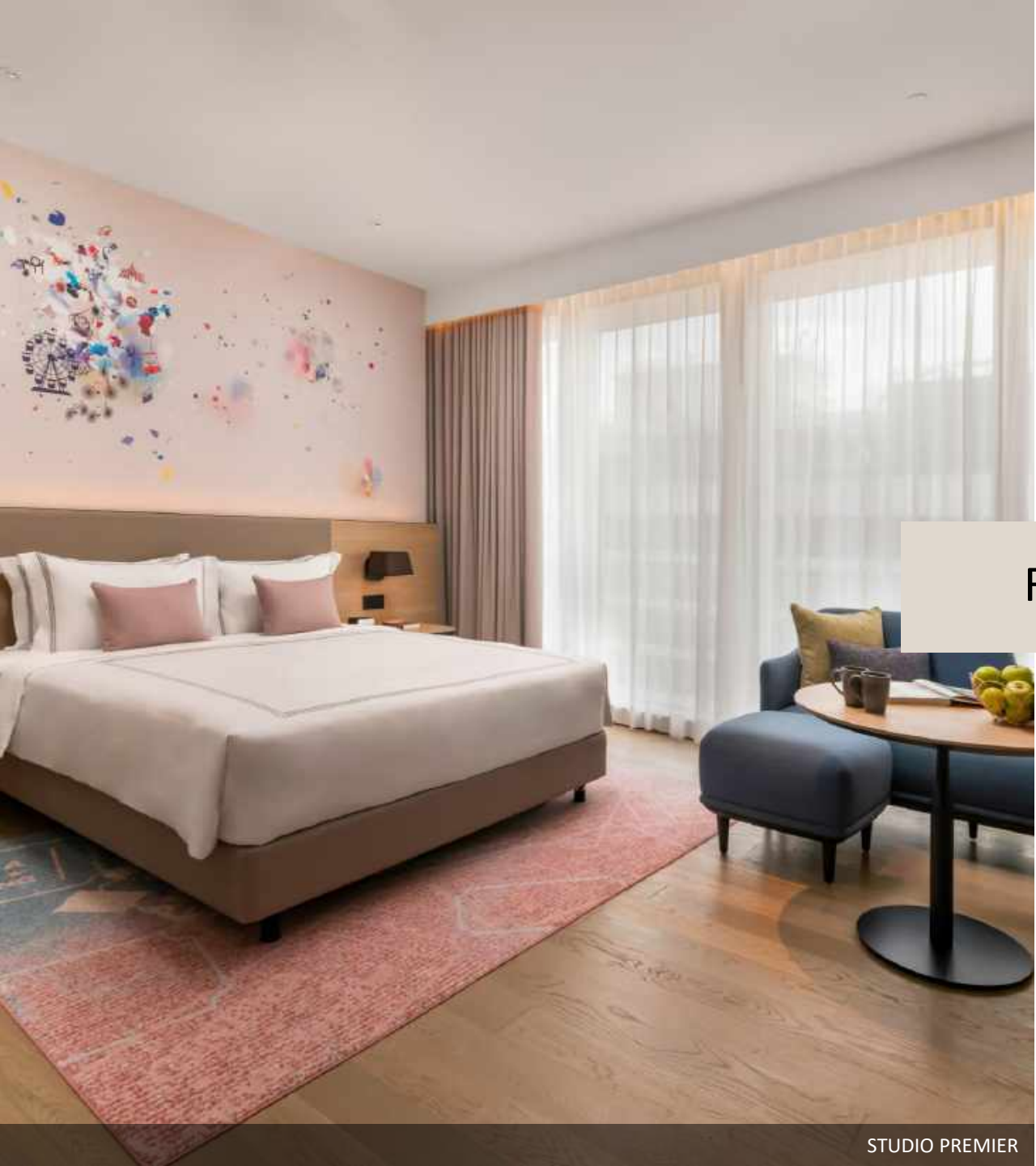


Tower B









## Rooms & Interior

STUDIO PREMIER

### 319 Fully-furnished Hotel Residences

ROOM CATEGORIES	SIZE RANGE (sqm)	NO. OF UNITS
Studio Deluxe	30	49
Studio Executive	35-41	151
Studio Premier	35-41	52
1 Bedroom Executive	47-51	54
1 Bedroom Premier	47-51	13



STUDIO DELUXE (TWIN BED)





FRASERS  
HOSPITALITY



STUDIO PREMIER (BATHROOM)



1-BEDROOM



1-BEDROOM PREMIER (BATHROOM)



THE DEN (ALL-DAY DINING RESTAURANT)



# JUKEBOX





## The Pod (Meeting Rooms)



## Meeting Rooms

Setting	Banquet	**Cluster	Theatre	*Classroom	*U-Shape	*Boardroom
Capacity						
Pod 1 (80sqm)	40	32	80	45	15	18
Pod 2 (40sqm)	20	14	40	21	15	12
Pod 3 (40sqm)	20	14	40	21	15	12

\*Seating arrangement is set for 3 pax per table

\*\*Seating arrangement is set for max. 6 pax per table

Pod 2 and Pod 3 are attachable and can be converted into one meeting room

### Meeting provisions include:

- Use of meeting rooms with preferred set-up
- Whiteboard / Flipchart with assorted markers
- Built in LCD projector and screen
- Drinking water and lollipops
- Writing materials (pen and notepad)
- Refreshments is subject to additional charges



POD 1 (CLASSROOM SETUP)



FRASERS  
HOSPITALITY

POD 1 (CLASSROOM SETUP)



*F*  
**FRASERS**  
HOSPITALITY

More Facilities



POW WOW (PREMIER LOUNGE)











## Out & About

PAVILION KL SHOPPING MALL

# Out & About



## Explore

- KL Hop-On Hop-Off Bukit Bintang 600m / 9-minute walk
- KL Tower 2.3km / 30-minute walk
- Petronas Twin Towers 1.6km / 21-minute walk
- Bukit Bintang Street Art Alleys 1.1km / 13-minute walk

## Nature

- Bukit Nanas Forest Reserve 2.2km / 30-minute walk
- KLCC Park 1.4km / 18-minute walk

## Shopping

- Pavilion KL Shopping Mall 550m / 8-minute walk
- Lot 10 Shopping Mall 600m / 8-minute walk
- Fahrenheit 88 KL 270m / 4-minute walk

## Relax

- BB Park @ Bukit Bintang 900m / 13-minute walk
- Cafés and restaurants:
  - Lot 10 Hutong Food Court 650m / 9-minute walk
  - Jalan Alor Food Street 900m / 13-minute walk
  - Starhill Feast Village 350m / 5-minute walk
  - Changkat Bukit Bintang 1.1km / 14-minute walk
  - Breakfast Spot 1.5km / 20-minute walk



**Capri by Fraser, Bukit Bintang / Malaysia**  
**160 Jalan Imbi**  
**Bukit Bintang**  
**55100 Kuala Lumpur**

**Email: [sales.kualalumpur@capribyfraser.com](mailto:sales.kualalumpur@capribyfraser.com)**

