



GRAND HOTEL
DONAT
Superior
★★★★/★★★★





РОГАШКА СЛАТИНА, МЕЖДУ МИФОМ И РЕАЛЬНОСТЬЮ В СТРАНЕ ДОНАТА, СТЕКЛА И ВИНА

Среди зеленых холмов и долин, на солнечной стороне Альп, среди плодородного винодельческого края находится город. Маленький и живописный. Целебный водный источник и легенда о его рождении оставили свой отпечаток на богатом развитии Рогашкой Слатины. Руки местных мастеров-стеклодувов создают уникальный хрусталь, нашептывая при этом единственные истории о красоте прозрачной воды. Вино высшего качества, сделанное из зрелых виноградных лоз местных виноградников, дарит нам ощущение блаженства. Окруженные красотой и традицией, в стране Доната, стекла и вина, предадимся ощущению свободы.

ROGAŠKA SLATINA, BETWEEN MYTH AND REALITY IN THE LAND OF DONAT, GLASS AND WINE

Between green hills and valleys, on the sunny side of the Alps, in the fertile wine-growing region, lies a town. Small and picturesque. The medicinal water spring and the legend of its appearance mark the rich development of Rogaška Slatina through time. Skilful hands of local expert glassworkers shape crystal, whispers tell unique stories of water transparency. The quality wine, produced from ripe local vines, intoxicates my senses. Surrounded by beauty and tradition in the land of Donat, glass and wine, I wake up to the feeling of freedom.

ROGAŠKA SLATINA, ZWISCHEN MYTHEN UND REALITÄT IM LAND DES DONATS, DES GLASES UND DES WEINES

Zwischen grünen Hügeln und Tälern, auf der Sonnenseite der Alpen liegt inmitten des fruchtbaren Weinanbaugebiets eine kleine und malerische Stadt. Das heilende Mineralwasser und die Legende von seiner Entstehung kennzeichnen die reiche Entwicklung von Rogaška Slatina über die Zeit. Mit geschickten Händen formen die hier lebenden Meister das Kristallglas und erzählen einzigartige Geschichten über die Klarheit des Wassers. Der berauschende Wein, der aus den reifen Weintrauben der umliegenden Weingärten gewonnen wird, berauscht die Sinne. Umgeben von Schönheit und Tradition, so erwache ich im Land des Donats, des Kristallglases und des Weines mit einem Gefühl der Freiheit.

ROGAŠKA SLATINA, TRA MITO E REALTÀ TERRA DEL DONAT, DEL VETRO E DEL VINO

Tra colline e verdi valli, là nel lato soleggiato delle Alpi, nel cuore della fertile regione vinicola, si trova una città. Piccola e caratteristica. La presenza della sorgente d'acqua curativa e la leggenda della sua nascita, caratterizzano il ricco sviluppo di Rogaška Slatina nel corso del tempo. Le mani di abili maestri vetrai qui residenti formano il cristallo, sussurrando storie suggestive di acquatiche trasparenze. L'eccellente vino, prodotto dalle viti mature circostanti, inebria i sensi. Travolto dalla bellezza e della tradizione, nella terra del Donat, del vetro e del vino, mi desto libero.



Полностью обновленный и кондиционированный отель имеет: 2 специальных номера-сюиты («Данте», «Царский»), 13 апартаментов Luxurious, 2 номера Panoramic, 9 президентских апартаментов, 11 семейных апартаментов, 76 двухместных номеров, 62 одноместных номера, а также конференц-зал на 50 человек.

В номерах есть: кондиционер и балкон, мини-бар, сейф, спутниковое ТВ махровый халат, тапочки и подключение к Интернет. Бесплатный Wi-Fi.

Fully renovated and air-conditioned hotel comprises of: 2 special suits (Dante & Tsarian), 13 Luxurious apartments, 2 panoramic rooms, 9 presidential suite, 11 family apartments, 76 double rooms and 62 single rooms and a conference hall with a capacity of 50 persons.

Individual rooms are air conditioned and have a balcony, mini bar, safe, satellite TV, hairdryer, bathrobe, slippers, internet access and Free Wi-fi.

Das Hotel wurde vollkommen neu gestaltet, ist vollklimatisiert und umfasst: 2 Besondere Suiten (Dante, Zaren), 13 Luxurious Appartements, 2 Panorama-Zimmer, 9 Präsidenten-Suiten, 11 Familien-Appartements, 76 Doppelzimmer, 62 Einzelzimmer und einen Konferenzsaal für 50 Personen.

Alle Zimmer sind mit einer Klimaanlage ausgestattet, haben einen Balkon, Minibar, Safe, Satellitenfernsehen, Haartrockner, Bademantel, Pantoffeln, und Internetanschluss. Kostenloses WLAN.

L'albergo è completamente rinnovato e climatizzato. Dispone di 2 suite speciali (Dante, dello Zar), 13 appartamenti Luxurious, 2 stanze panoramiche, 9 appartamenti presidenziali, 11 appartamenti famigliari, 76 camere doppie, 62 camere single e 1 sala conferenze con capienza di 50 persone.

Le camere e gli appartamenti dispongono di: terrazzo, minibar e cassaforte. Saranno inoltre a vostra disposizione laTV satellitare, l'accappatoio, le pantofole, l'asciugacapelli ed il collegamento ad internet. Connessione Wi-fi gratuita.



MATEJA KRAJNC

Director of the Grand Hotel Donat Superior
Direktor Grand Oteľa Donat Superior
Direttrice del Grand Hotel Donat Superior

Чтобы Ваше пребывание у нас было максимально приятным, мы стараемся постоянно расширять наши предложения размещения и услуг. Мы благодарим Вас за высокую оценку наших услуг, а также приглашаем Вас присоединиться к нам и погрузиться в наш мир комфорта, здоровья, хорошего самочувствия и люкxуcа. Мы готовы выполнить ваши желания и ожидания.

In order to make your stay with us as pleasant as possible, we strive to constantly broaden our offer of accommodations as well as services. We thank you for your high evaluation of our services until now and invite you to join us and try out our world of comfort, health, well-being and luxury. We are here to fulfil your wishes and expectations.

Damit wir Ihren Aufenthalt noch verschönern, bemühen wir uns ständig, unser Aufenthalts- und Dienstleistungsangebot zu erweitern. Wir danken Ihnen für die bisherige sehr gute Bewertung unserer Leistungen und laden Sie gleichzeitig dazu ein, uns Gesellschaft zu leisten in unserer Welt des Komforts, der Gesundheit, des Wohlbefindens und des Luxus. Wir sind hier um Ihre Wünsche und Erwartungen zu erfüllen.

Per rendere il vostro soggiorno con noi più piacevole, ci accingiamo continuamente di ampliare la nostra gamma di servizi e la nostra offerta residenziale. Ringraziandovi per l'elevata valutazione dei nostri servizi, vi invito ad unirvi a noi per celebrare un mondo segnalato da comfort, salute, benessere e lusso. Saremo lieti di soddisfare ogni vostra aspettativa.

Здание Гранд Отеля Donat было построено в 1973 году, как образец размещения современной архитектуры в природной среде. В 2001 году владельцем и управляющим гостиницы стала семья Крайнци, которая в 2015 году завершила полную архитектурную реконструкцию и модернизацию объекта. Благодаря своему замечательному географическому расположению и окружающей нетронутой природе гостиница является идеальным выбором для любителей здорового образа жизни, увлекающихся велоспортом, гольфом и походами в горы. Наличие перехода-туннеля на первом этаже обеспечивает быстрый и не зависящий от погоды доступ к лабораториям и/или кабинетам для хирургических процедур, а также располагающемуся в соседнем здании Медицинскому центру, где можно пить уникальную минеральную воду Donat MG. Спокойная обстановка гостиницы позволяет организовывать различные бизнесмероприятия.

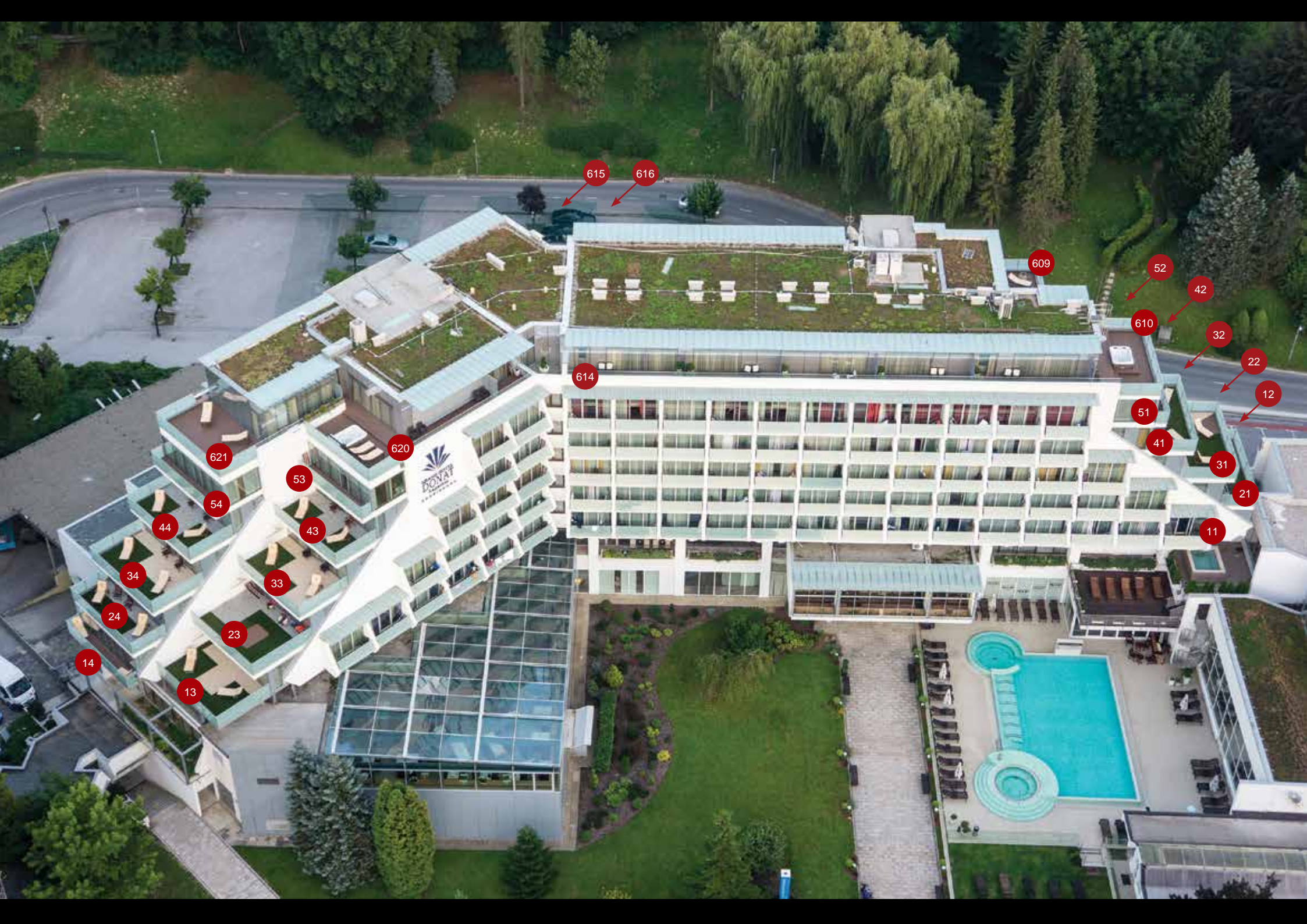
The building GH Donat was built in 1973 as a paragon of how modern architecture can be fitted into a natural setting. Since 2001 the hotel is owned and managed by family Krajnc, who have finished the hotels' overall architectural renovation and modernization in 2015.

Because of its great geographic location and the wonderful unspoiled nature, the hotel is ideal for people who prefer a healthy lifestyle, cycling, golfing and hiking. The tunnel connections on the ground floor enable the visitors a quick and weatherized access to all possible health examinations and/or surgical procedures as well as mineral water Donat MG drinking in the neighbouring building, the spa Medical Center. The quiet atmosphere is also ideal for various business events.

Das Gebäude vom GH Donat wurde im Jahr 1973 gebaut und galt als Vorbild für das Einbinden der modernen Architektur in ein natürliches Umfeld. Seit 2001 besitzt und leitet das Hotel die Familie Krajnc, welche im Jahr 2015 die gesamte architektonische Erneuerung und Modernisierung des Objektes abgeschlossen hat. Wegen seiner hervorragenden geografischen Lage und der wunderschönen, unversehrten Natur, ist das Hotel die ideale Wahl für alle, die eine gesunde Lebensweise, Radfahren, Golfen und Wandern bevorzugen. Die Tunnelverbindung im Erdgeschoss bietet Ihnen einen schnellen und vom Wetter ungestörten Zugang zu eventuellen gesundheitlichen Untersuchungen und/oder chirurgischen Eingriffen im Nachbargebäude, dem Kurort Medical Center, wo Sie auch das einzigartige Mineralwasser Donat MG trinken können. Das ruhige Ambiente ist auch für unterschiedliche geschäftliche Treffen ideal.

L'albergo GH Donat è stato costruito nel 1973, come esempio di integrazione di architettura moderna nell'ambito naturale. La proprietà e la gestione passarono alla famiglia Krajnc nel 2001. Nel 2015 fu completato il vasto restauro della struttura e degli interni. Grazie alla posizione geografica favorevole e la natura incontaminata, l'albergo rimane un'ottima scelta per gli amanti di uno stile di vita sano, ciclisti, golfisti e appassionati di trekking.

La connessione con l'edificio adiacente Medical Center attraverso il tunnel interrato, facilita l'accesso ad eventuali ricerche mediche e/o interventi chirurgici, nonché alla fonte dell'acqua minerale Donat Mg, anche in caso di maltempo. L'ambiente tranquillo è altresì ideale per realizzare diversi eventi ed incontri d'affari.



615

616

609

52

42

610

32

22

12

614

51

41

31

21

11

621

620

53

54

43

44

33

34

23

24

14

13

DOVAT
HOTEL





- 621 Aleksander
- 620 Katarina
- 616 Double DeLuxe
- 615 Double DeLuxe
- 614 DeLuxe
- 610 Double DeLuxe
- 609 Leonardo Da Vinci
- 44 Family apartment
- 43 Presidential suite
- 42 Family apartment
- 41 Family apartment
- 33 Presidential suite
- 23 Presidential suite



- 54 Panoramic
- 51 Panoramic



- 53 Presidential suite
- 52 Family apartment
- 34 Presidential suite
- 33 Presidential suite
- 32 Presidential suite
- 31 Family apartment
- 24 Family apartment
- 22 Presidential suite
- 21 Family apartment
- 14 Single family apartment
- 13 Family apartment
- 12 Double family apartment
- 11 Individual sauna complex





TSARIAN SUITE - 621 + 620

The combination of two higher standard luxury accommodations with a panoramic view of Rogaška Slatina. 98 m² living area + 84 m² terrace.

DESCRIPTION

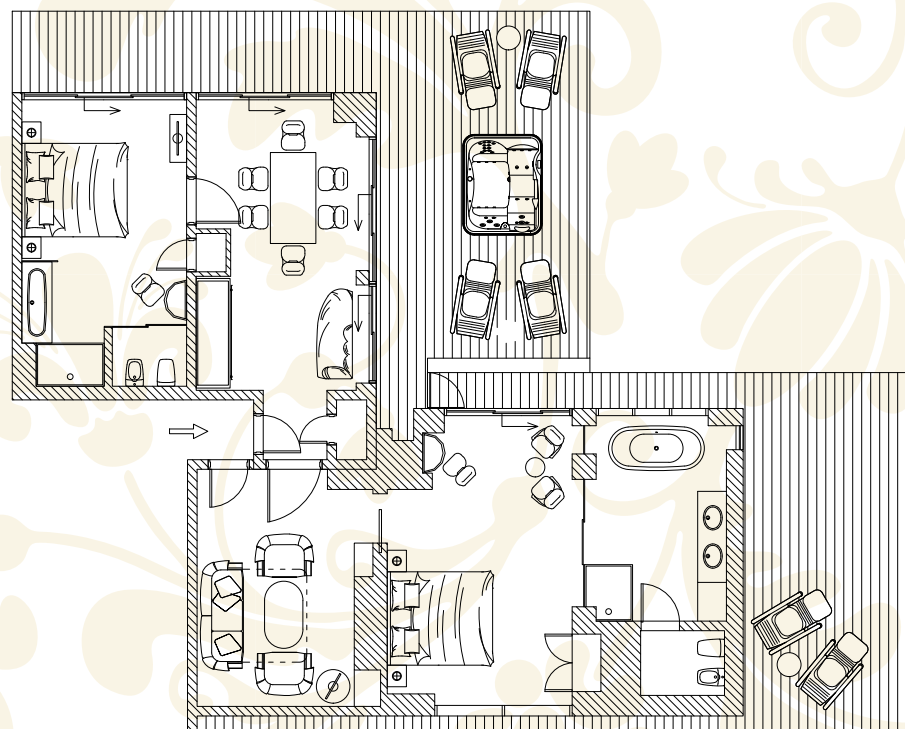
- connecting rooms
- free wi-fi
- TV
- safe
- mini bar
- terrace
- jacuzzi
- 2x bathroom;
2x bath + 2x shower

ACCESSORIES

- slippers per person
- bathrobe per person
- 3x towels per person
- 4x bathing/grooming set
per person
- hairdryer

ADDITIONAL SERVICES

- room service
- dry-cleaning service
- ironing
- wake-up calls
- florist
- newspapers request







ALEKSANDER - 621

A stylish luxury accommodation for people of fine taste. The suite is decorated in detail, with a 24-carat gold washbasin and a beautiful view of the surrounding. 55 m² living area + 37 m² terrace.

DESCRIPTION

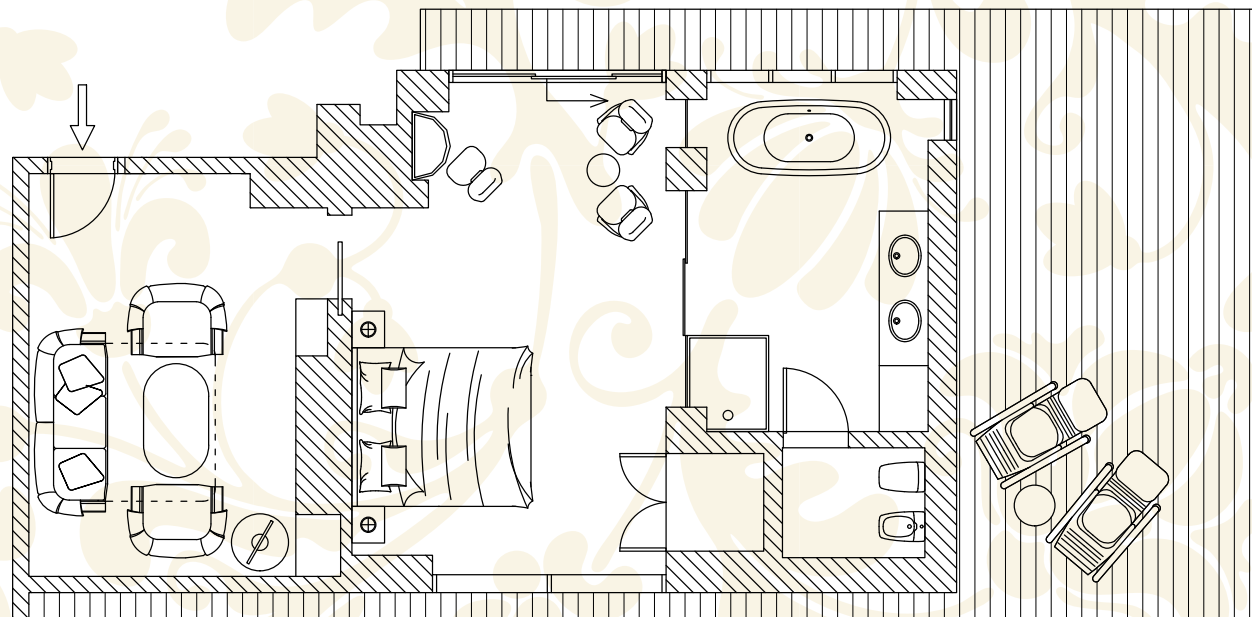
- free wi-fi
- TV
- safe
- mini bar
- terrace
- 1x bathroom;
bath + shower

ACCESSORIES

- slippers per person
- bathrobe per person
- 3x towels per person
- 4x bathing/grooming set
per person
- hairdryer

ADDITIONAL SERVICES

- room service
- dry-cleaning service
- ironing
- wake-up calls
- florist
- newspapers request







KATARINA - 620

A romantic, refined higher standard luxury accommodation with cunning details, a Jacuzzi and a view of Rogaška Slatina. 43 m² living area + 47 m² terrace.

DESCRIPTION

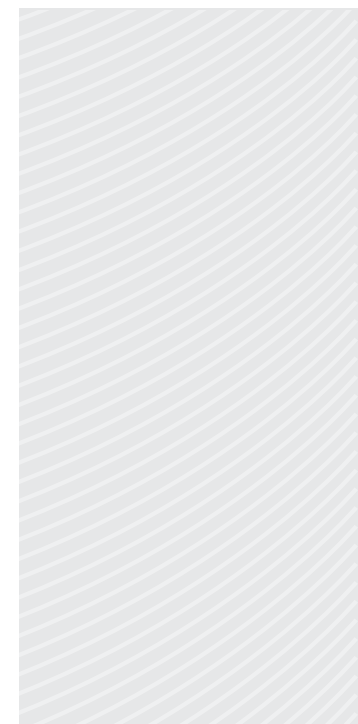
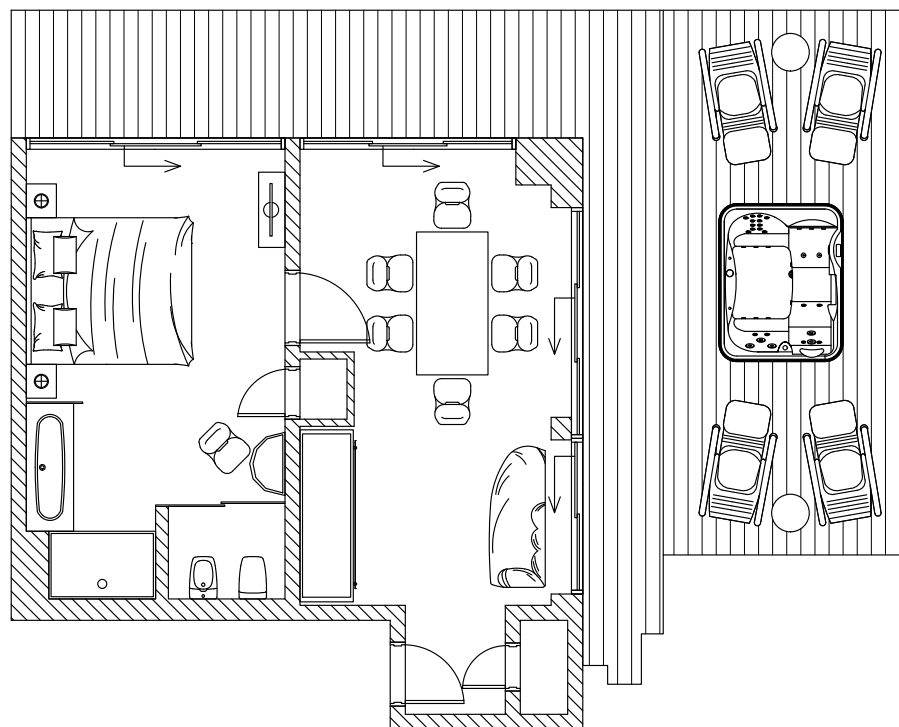
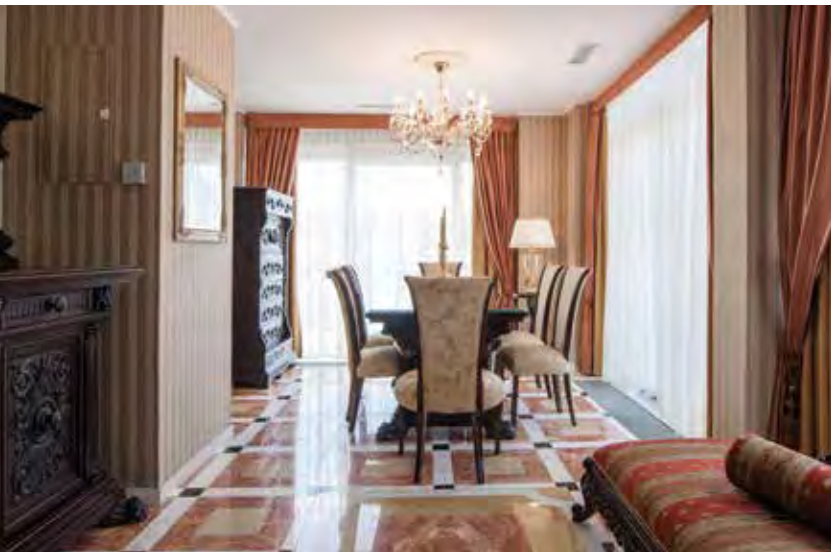
- free wi-fi
- TV
- safe
- mini bar
- terrace
- jacuzzi
- 1x bathroom;
bath + shower

ACCESSORIES

- slippers per person
- bathrobe per person
- 3x towels per person
- 4x bathing/grooming set
per person
- hairdryer

ADDITIONAL SERVICES

- room service
- dry-cleaning service
- ironing
- wake-up calls
- florist
- newspapers request







DBL DELUXE - 616 + 615

The combination of two joint elegant, spacious high class accommodations with a view of the forest hillside. 69 m² living area + 6 m² terrace.

DESCRIPTION

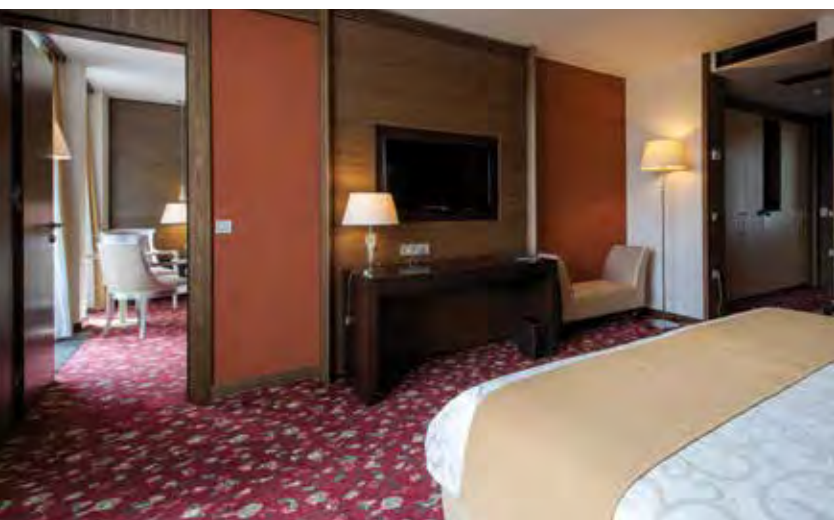
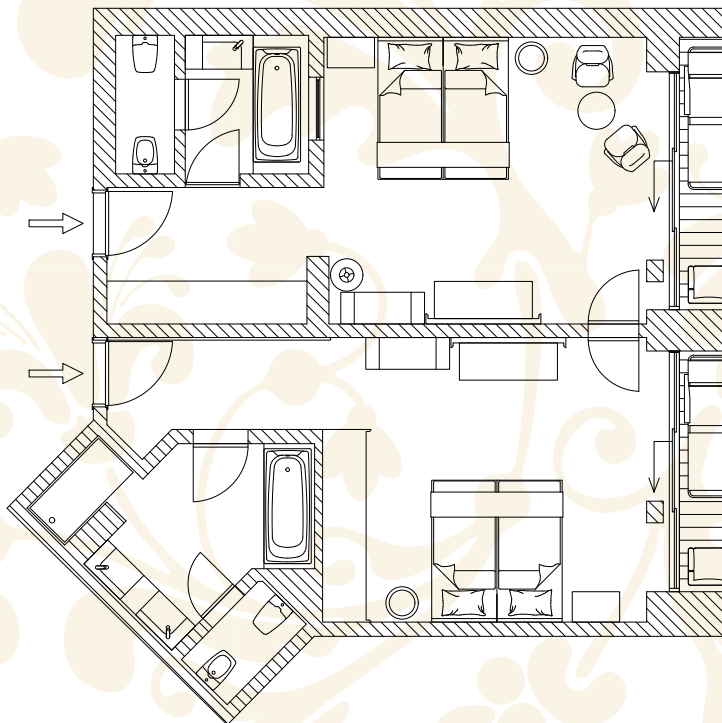
- connecting rooms
- free wi-fi
- TV
- safe
- mini bar
- terrace
- 2x bathroom;
2x bath

ACCESSORIES

- slippers per person
- bathrobe per person
- 3x towels per person
- 4x bathing/grooming set
per person
- hairdryer

ADDITIONAL SERVICES

- room service
- dry-cleaning service
- ironing
- wake-up calls
- florist
- newspapers request







DANTE - 611 + 610 + 609

The combination of three stylish higher standard luxury accommodations with a Jacuzzi and panoramic view of Rogaška Slatina. 97 m² living area + 91 m² terrace.

DESCRIPTION

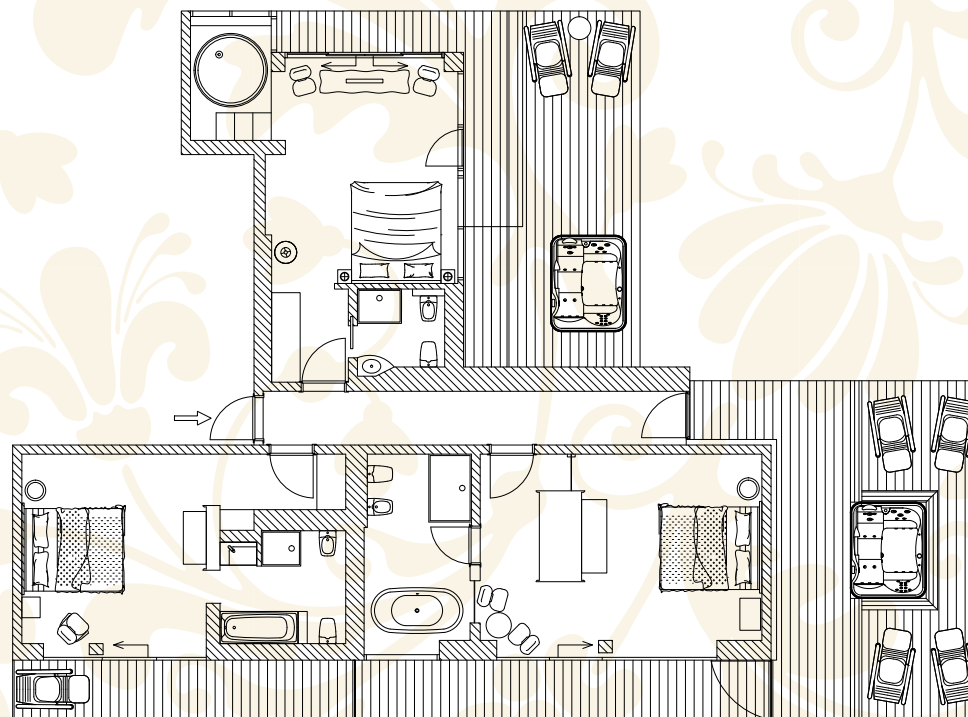
- connecting rooms
- free wi-fi
- TV
- safe
- mini bar
- terrace
- 2x jacuzzi
- 3x bathroom;
- 3x bath + 3x shower

ACCESSORIES

- slippers per person
- bathrobe per person
- 3x towels per person
- 4x bathing/grooming set per person
- hairdryer

ADDITIONAL SERVICES

- room service
- dry-cleaning service
- ironing
- wake-up calls
- florist
- newspapers request







DBL DELUXE - 611 + 610

The combination of two refined spacious accommodations with a tub and a wonderful view. 65 m² living area + 58 m² terrace

DESCRIPTION

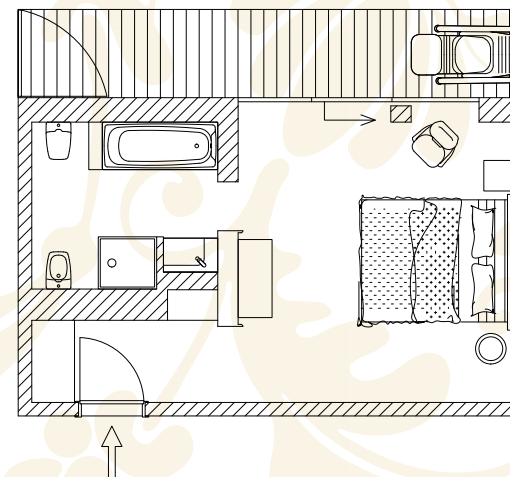
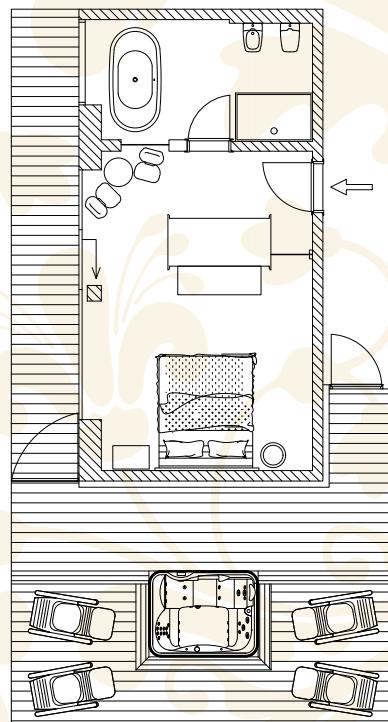
- connecting rooms (Y/N)
- free wi-fi
- TV
- safe
- mini bar
- terrace
- 2x bathroom;
2x bath + 2x shower

ACCESSORIES

- slippers per person
- bathrobe per person
- 3x towels per person
- 4x bathing/grooming set per person
- hairdryer

ADDITIONAL SERVICES

- room service
- dry-cleaning service
- ironing
- wake-up calls
- florist
- newspapers request







LEONARDO DA VINCI - 609

A stylish accommodation with 24-carat gold details, a mosaic dedicated to the renaissance genius Leonardo; with a view of the forest hillside. 32 m² living area + 33 m² terrace.

DESCRIPTION

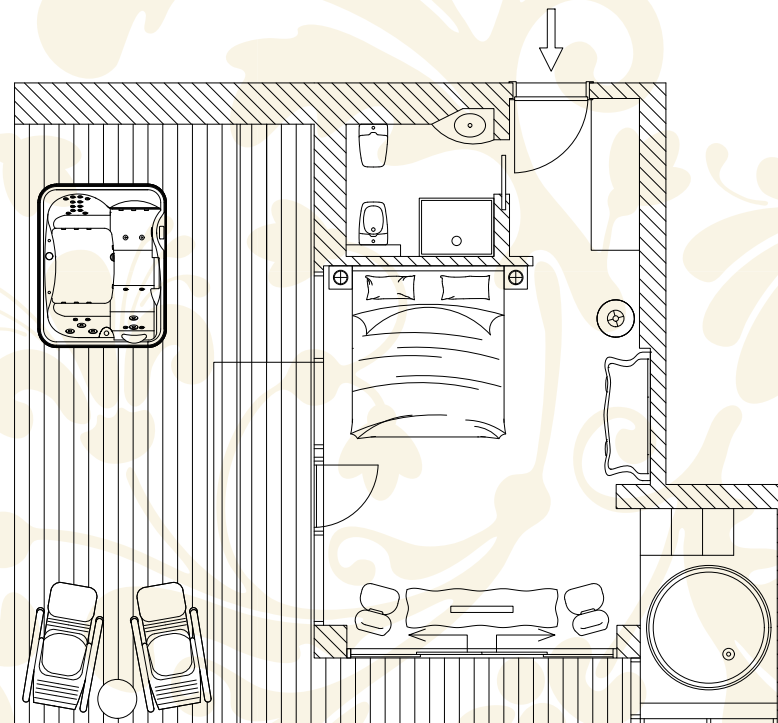
- free wi-fi
- TV
- safe
- mini bar
- terrace
- jacuzzi
- 1x bathroom;
bath + shower

ACCESSORIES

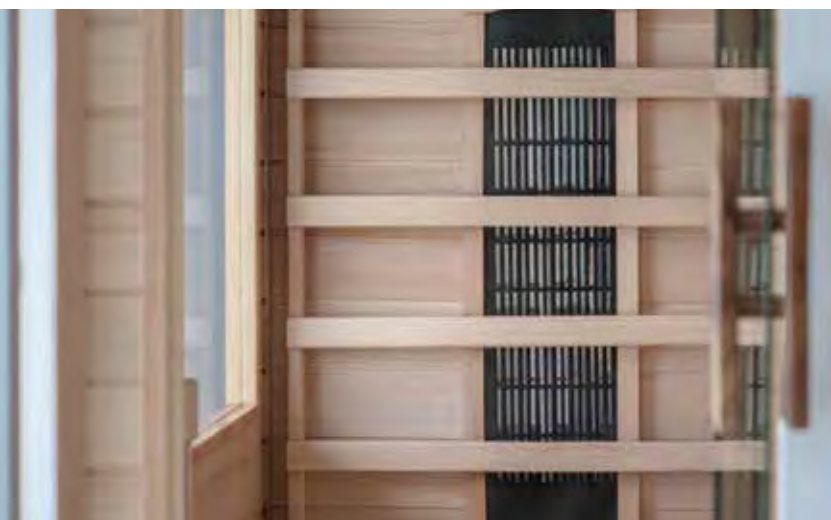
- slippers per person
- bathrobe per person
- 3x towels per person
- 4x bathing/grooming set
per person
- hairdryer

ADDITIONAL SERVICES

- room service
- dry-cleaning service
- ironing
- wake-up calls
- florist
- newspapers request







FAMILY APARTMENT - 44

A new family accommodation with its own sauna; combined of two living units with a spacious terrace and forest view. 54,6 m² living area + 29 m² terrace.

DESCRIPTION

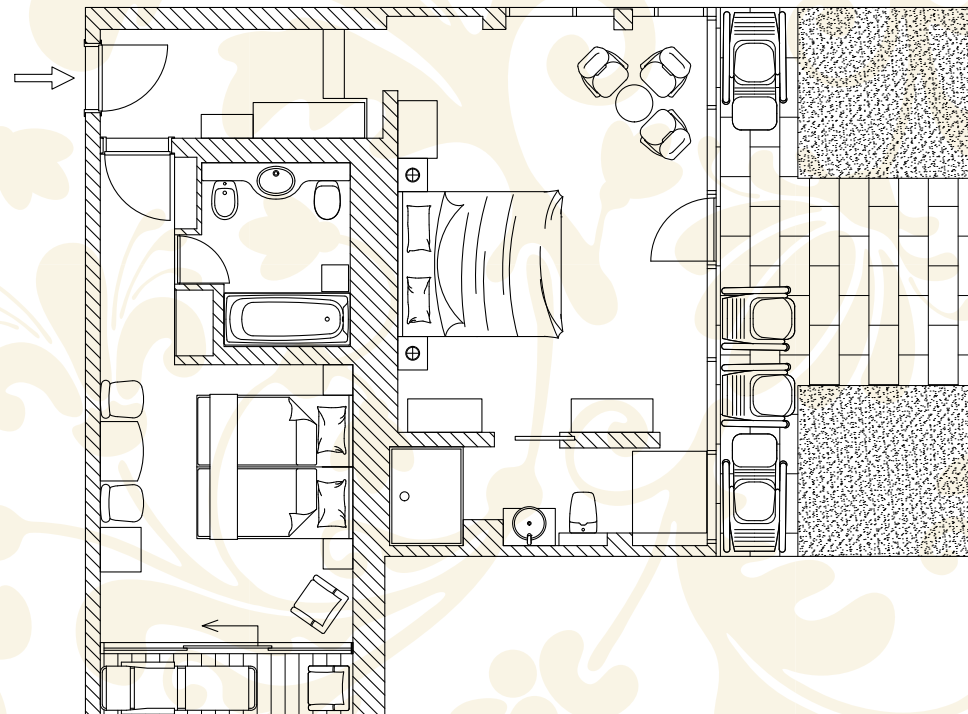
- connecting rooms
- free wi-fi
- TV
- safe
- mini bar
- terrace
- 2x bathroom; bath + shower
- Infra sauna

ACCESSORIES

- slippers per person
- bathrobe per person
- 3x towels per person
- 4x bathing/grooming set per person
- hairdryer

ADDITIONAL SERVICES

- room service
- dry-cleaning service
- ironing
- wake-up calls
- florist
- newspapers request







PRESIDENTIAL SUITE - 43

Two units connected by a spacious living room, extremely comfortable, with an added bonus of an own sauna, Jacuzzi and a park view. 82,1 m² living area + 29 m² terrace.

DESCRIPTION

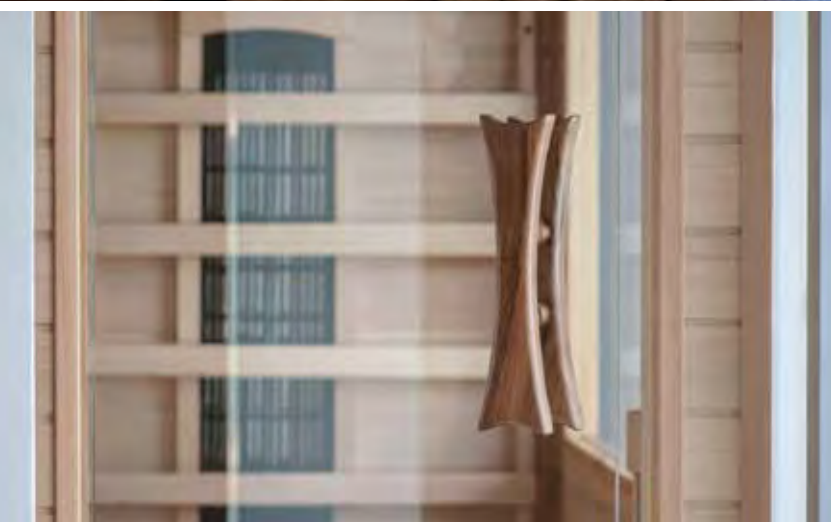
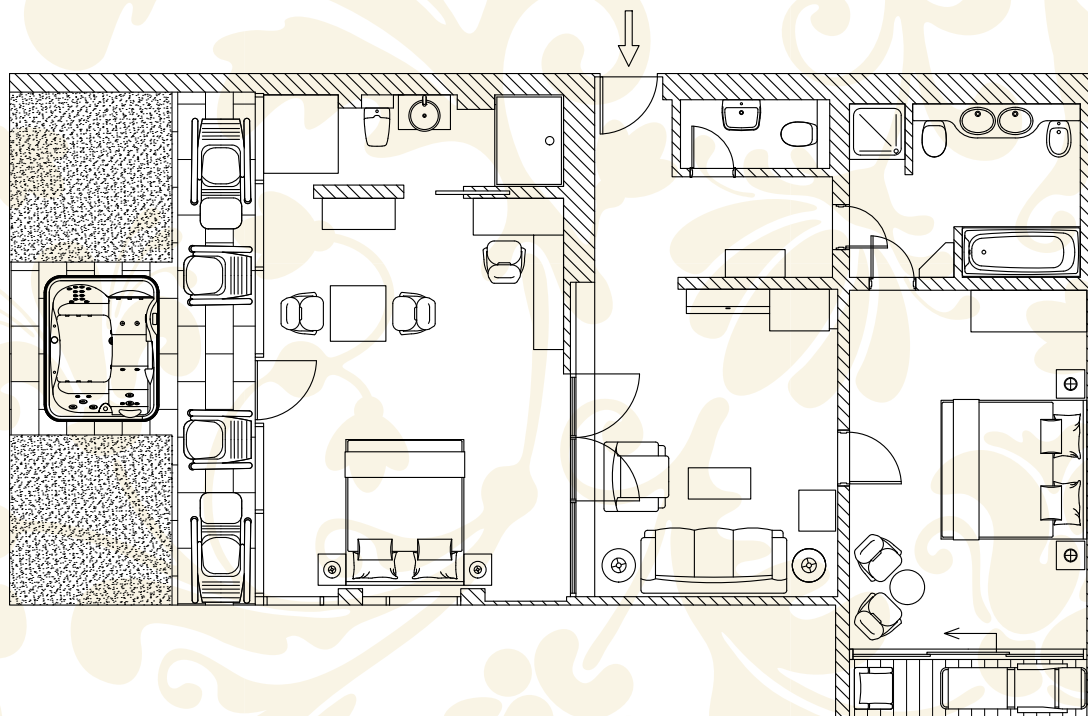
- connecting rooms
- free wi-fi
- TV
- safe
- mini bar
- terrace
- jacuzzi
- 2x bathroom; bath + shower
- Infra sauna

ACCESSORIES

- slippers per person
- bathrobe per person
- 3x towels per person
- 4x bathing/grooming set per person
- hairdryer

ADDITIONAL SERVICES

- room service
- dry-cleaning service
- ironing
- wake-up calls
- florist
- newspapers request







FAMILY APARTMENT - 42

A new family complex made of two living units with two terraces and a forest view. 60,2 m² living area + 26 m² terrace.

DESCRIPTION

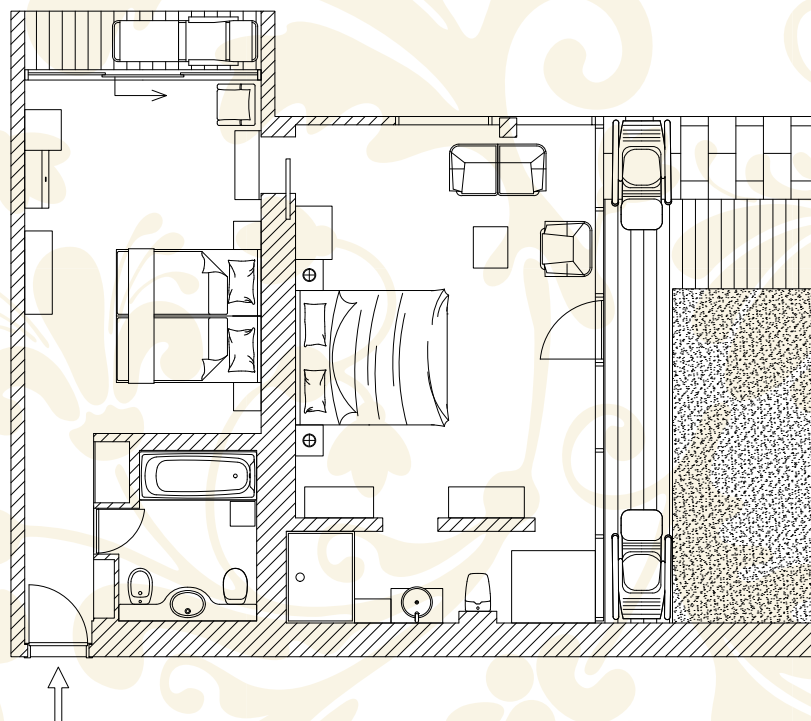
- connecting rooms
- free wi-fi
- TV
- safe
- mini bar
- terrace
- 2x bathroom; bath + shower
- Infra sauna

ACCESSORIES

- slippers per person
- bathrobe per person
- 3x towels per person
- 4x bathing/grooming set per person
- hairdryer

ADDITIONAL SERVICES

- room service
- dry-cleaning service
- ironing
- wake-up calls
- florist
- newspapers request







FAMILY APARTMENT - 41

A family accommodation with two living units, two terraces and a park view. 55,2 m² living area + 21 m² terrace.

DESCRIPTION

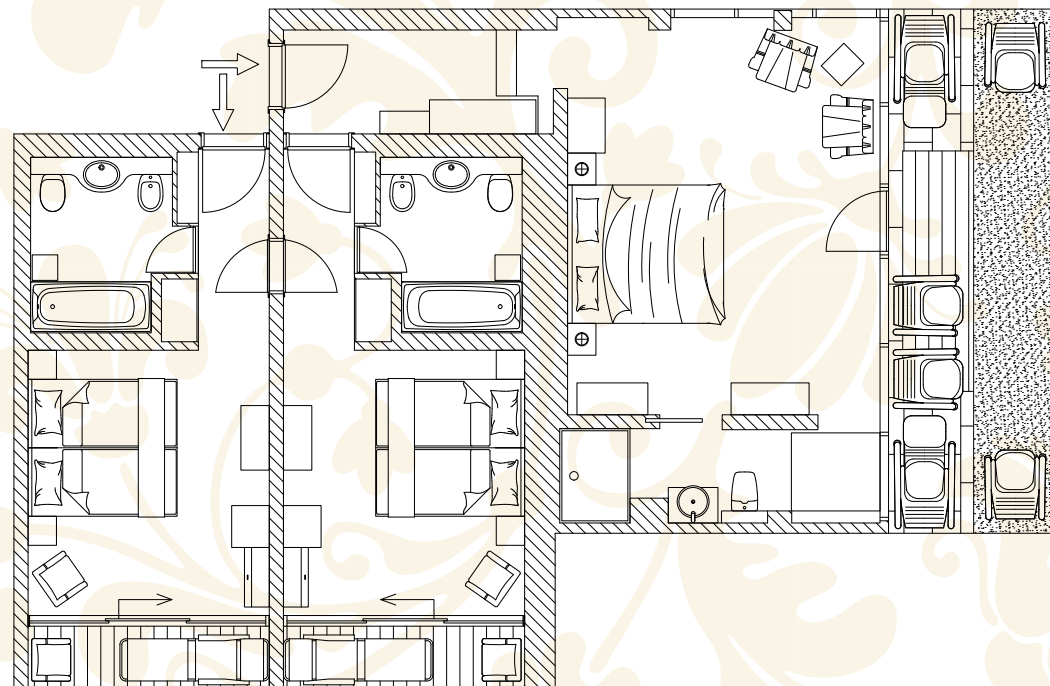
- connecting rooms (Y/N)
- free wi-fi
- TV
- safe
- mini bar
- terrace
- 2x bathroom; bath + shower
- Infra sauna

ACCESSORIES

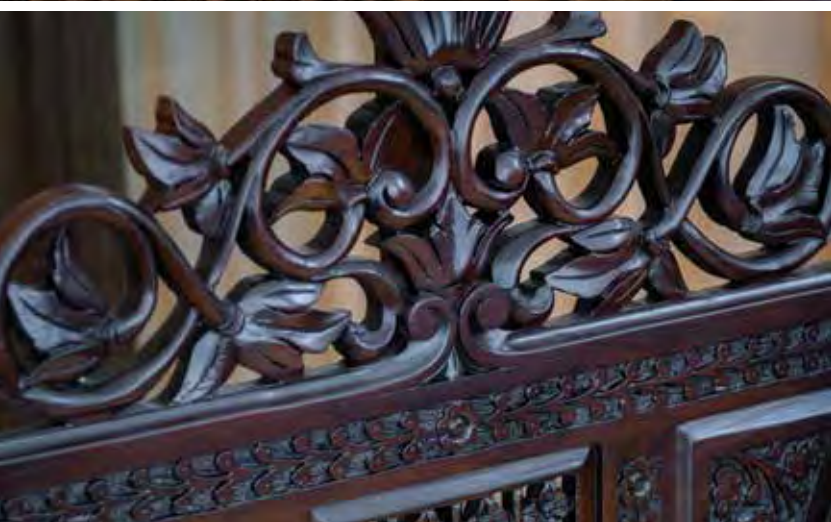
- slippers per person
- bathrobe per person
- 3x towels per person
- 4x bathing/grooming set per person
- hairdryer

ADDITIONAL SERVICES

- room service
- dry-cleaning service
- ironing
- wake-up calls
- florist
- newspapers request







PRESIDENTIAL SUITE - 33

An extremely elegant and spacious suite with two living units, a connecting living room and a big terrace.
77,7 m² living area + 34 m² terrace.

DESCRIPTION

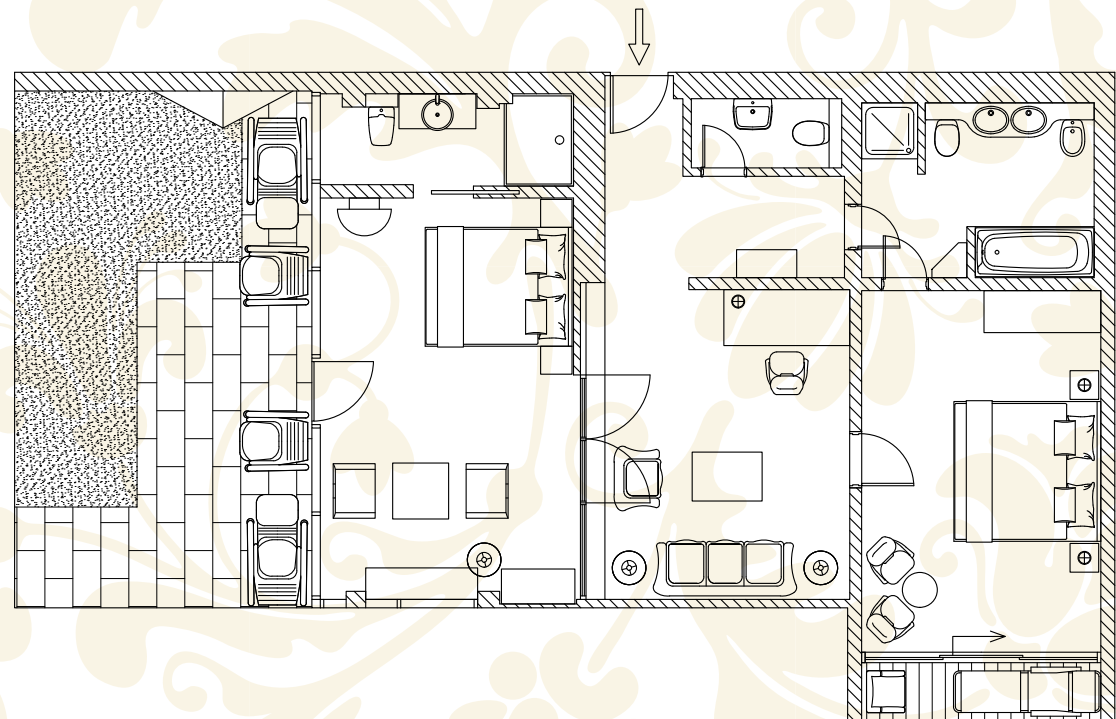
- connecting rooms
- free wi-fi
- TV
- safe
- mini bar
- terrace
- 2x bathroom;
bath + 2x shower

ACCESSORIES

- slippers per person
- bathrobe per person
- 3x towels per person
- 4x bathing/grooming set
per person
- hairdryer

ADDITIONAL SERVICES

- room service
- dry-cleaning service
- ironing
- wake-up calls
- florist
- newspapers request







PRESIDENTIAL SUITE - 23

Two extremely comfortable living units, connected by a spacious living room; with an own Jacuzzi and park view. 77,4 m² living area + 40 m² terrace.

DESCRIPTION

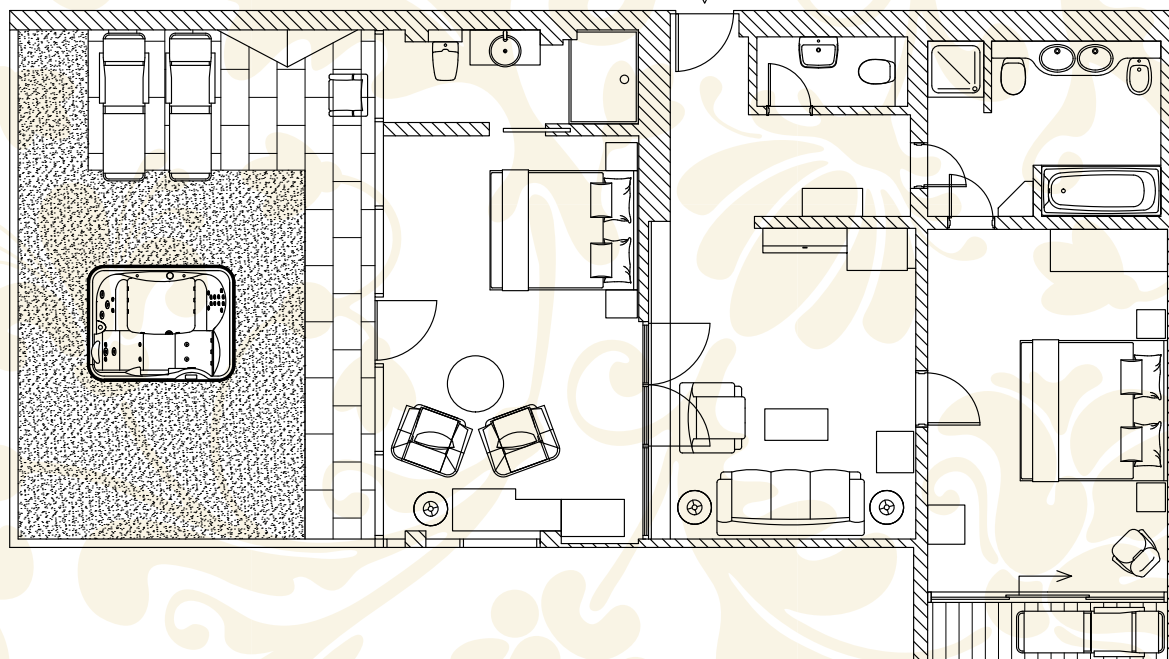
- connecting rooms
- free wi-fi
- TV
- safe
- mini bar
- terrace
- jacuzzi
- 2x bathroom;
bath + 2x shower

ACCESSORIES

- slippers per person
- bathrobe per person
- 3x towels per person
- 4x bathing/grooming set
per person
- hairdryer

ADDITIONAL SERVICES

- room service
- dry-cleaning service
- ironing
- wake-up calls
- florist
- newspapers request







PANORAMIC - 54

A wonderful accommodation with a panoramic view of Rogaška Slatina, a free-standing tub and extraordinary details. 36 m² living area + 7 m² terrace.

DESCRIPTION

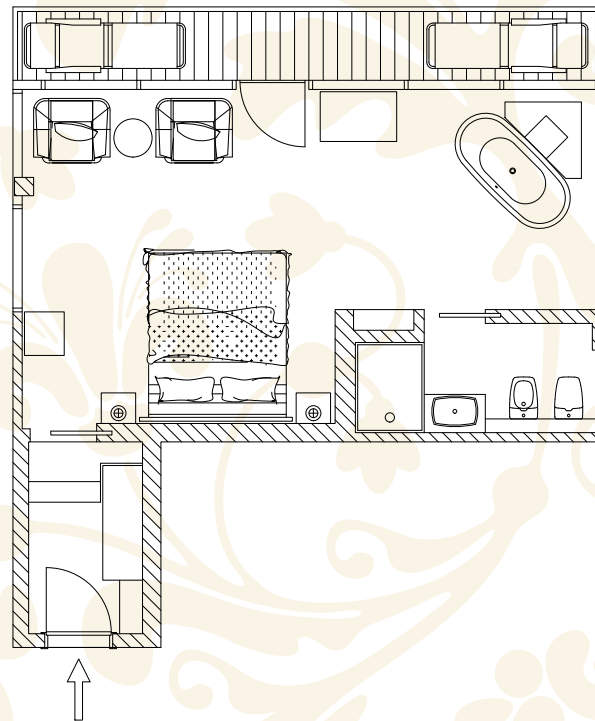
- free wi-fi
- TV
- safe
- mini bar
- terrace
- 1x bathroom;
bath + shower

ACCESSORIES

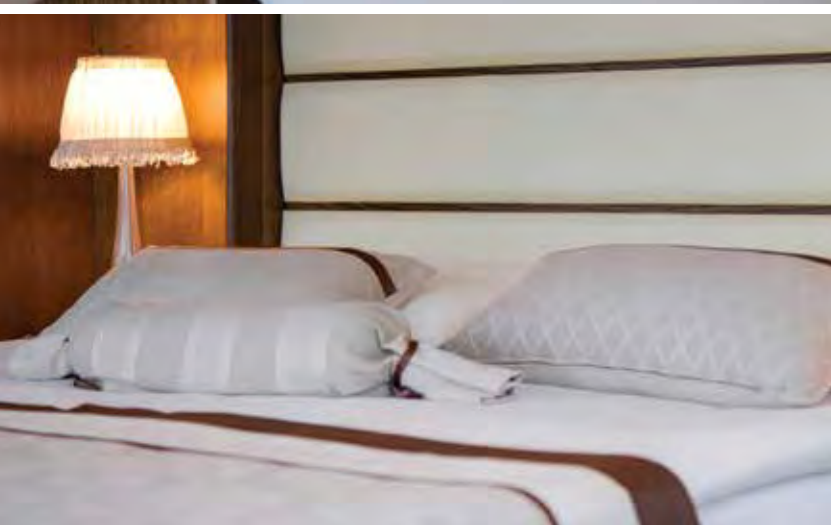
- slippers per person
- bathrobe per person
- 3x towels per person
- 4x bathing/grooming set
per person
- hairdryer

ADDITIONAL SERVICES

- room service
- dry-cleaning service
- ironing
- wake-up calls
- florist
- newspapers request







PANORAMIC - 51

A wonderful accommodation with a panoramic view of Rogaška Slatina, a free-standing tub and extraordinary details. 36 m² living area + 7 m² terrace.

DESCRIPTION

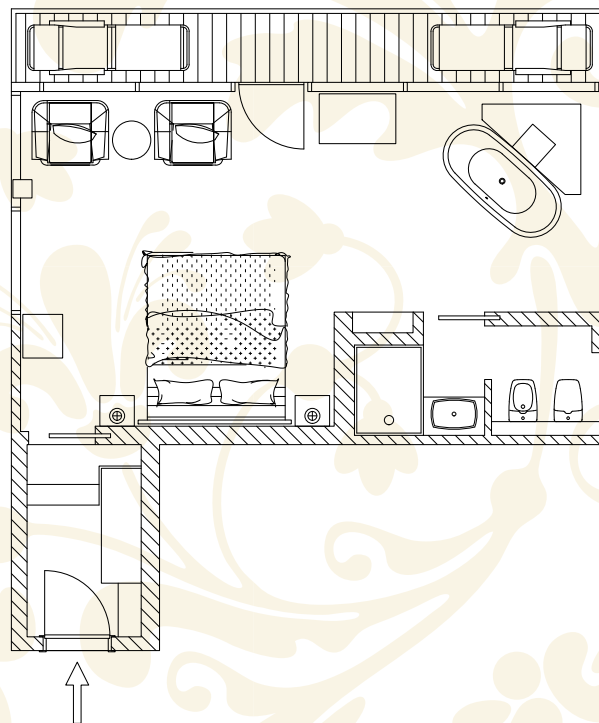
- free wi-fi
- TV
- safe
- mini bar
- terrace
- 1x bathroom;
bath + shower

ACCESSORIES

- slippers per person
- bathrobe per person
- 3x towels per person
- 4x bathing/grooming set
per person
- hairdryer

ADDITIONAL SERVICES

- room service
- dry-cleaning service
- ironing
- wake-up calls
- florist
- newspapers request







PRESIDENTIAL SUITE - 53

Two exquisitely comfortable and elegant living units connected by a spacious living room; park view.
82,8 m² living area + 9,7 m² terrace.

DESCRIPTION

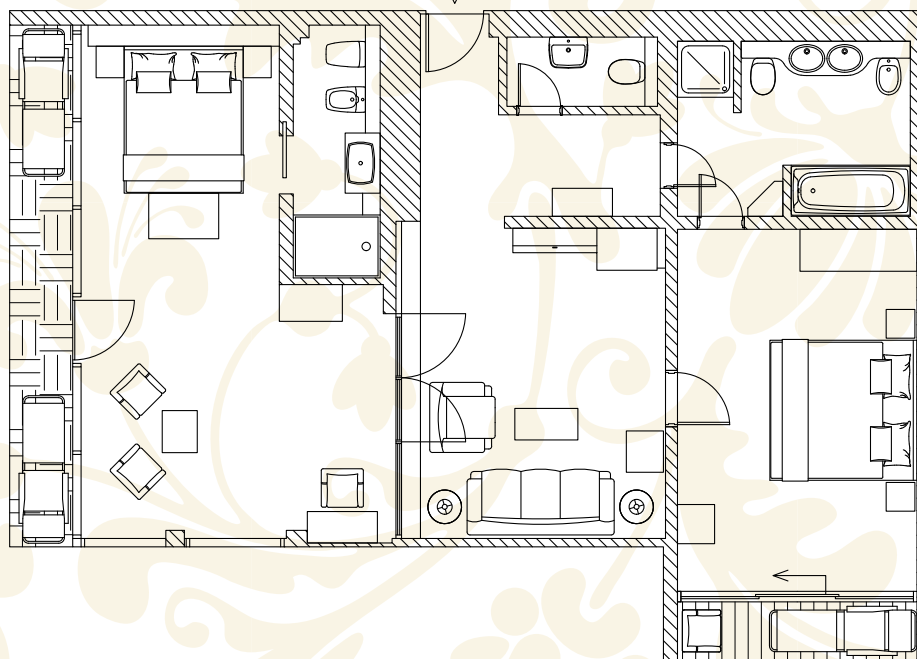
- connecting rooms
- free wi-fi
- TV
- safe
- mini bar
- terrace
- 2x bathroom;
bath + shower

ACCESSORIES

- slippers per person
- bathrobe per person
- 3x towels per person
- 4x bathing/grooming set
per person
- hairdryer

ADDITIONAL SERVICES

- room service
- dry-cleaning service
- ironing
- wake-up calls
- florist
- newspapers request







FAMILY APARTMENT - 52

A new, spacious, very bright family accommodation connecting two living units; with a forest view.
56,2 m² living area + 9 m² terrace.

DESCRIPTION

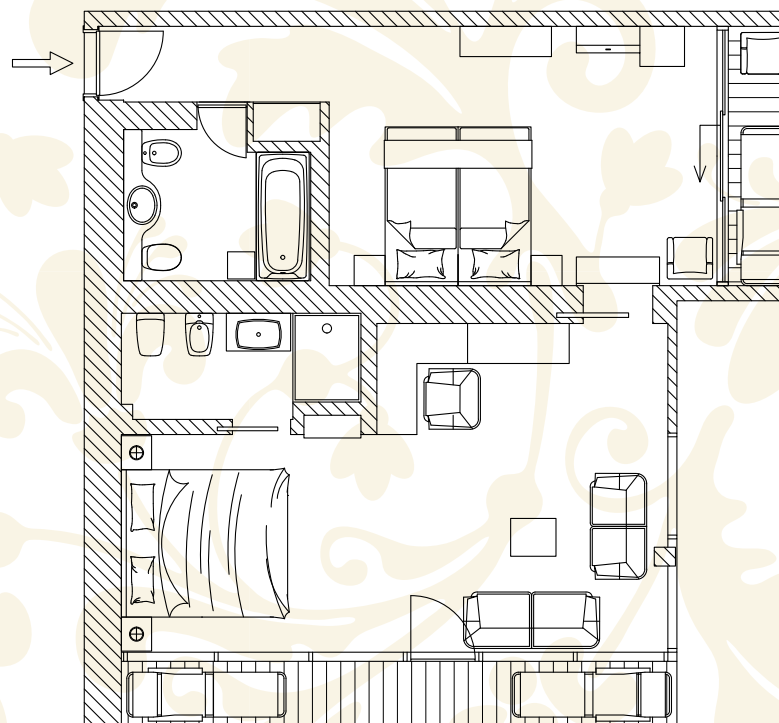
- connecting rooms
- free wi-fi
- TV
- safe
- mini bar
- terrace
- 2x bathroom;
bath + shower

ACCESSORIES

- slippers per person
- bathrobe per person
- 3x towels per person
- 4x bathing/grooming set
per person
- hairdryer

ADDITIONAL SERVICES

- room service
- dry-cleaning service
- ironing
- wake-up calls
- florist
- newspapers request







FAMILY APARTMENT - 34

A new family apartment connecting two living units; with a spacious terrace and a view of Rogaška Slatina. 52 m² living area + 35 m² terrace.

DESCRIPTION

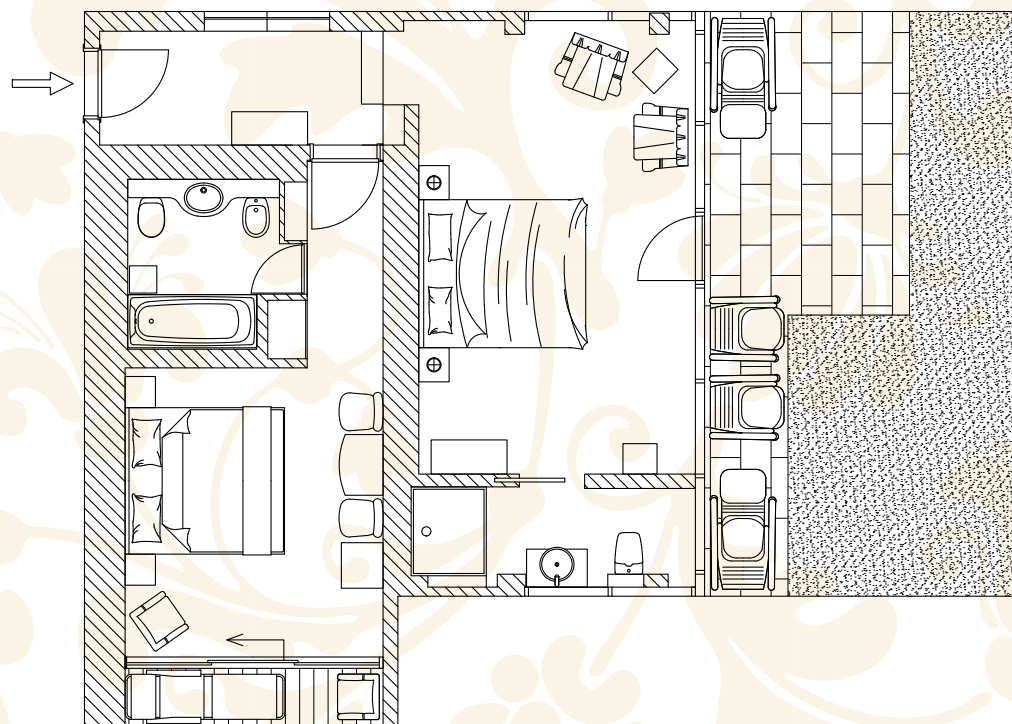
- connecting rooms
- free wi-fi
- TV
- safe
- mini bar
- terrace
- 2x bathroom; bath + shower

ACCESSORIES

- slippers per person
- bathrobe per person
- 3x towels per person
- 4x bathing/grooming set per person
- hairdryer

ADDITIONAL SERVICES

- room service
- dry-cleaning service
- ironing
- wake-up calls
- florist
- newspapers request







PRESIDENTIAL SUITE - 32

A comfortable, spacious suite with two living units, a big living room and a view of the forest.
77,7 m² living area + 34 m² terrace.

DESCRIPTION

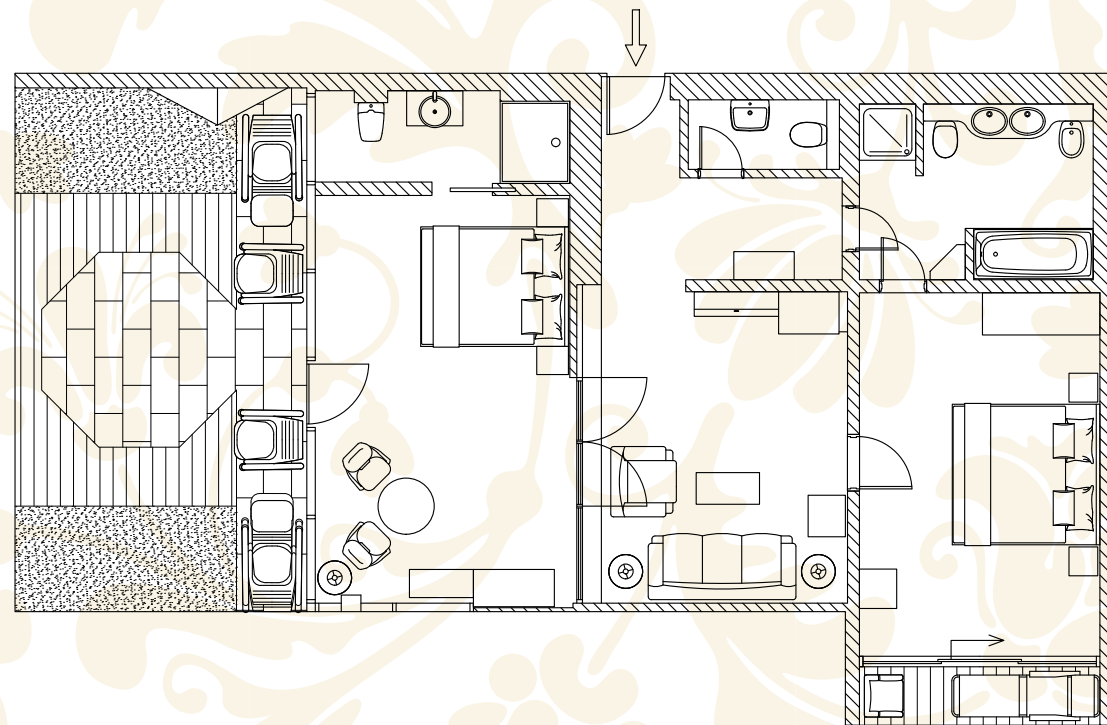
- connecting rooms
- free wi-fi
- TV
- safe
- mini bar
- terrace
- 2x bathroom;
bath + 2x shower

ACCESSORIES

- slippers per person
- bathrobe per person
- 3x towels per person
- 4x bathing/grooming set
per person
- hairdryer

ADDITIONAL SERVICES

- room service
- dry-cleaning service
- ironing
- wake-up calls
- florist
- newspapers request







FAMILY APARTMENT - 31

A new, extraordinary bright, elegant family accommodation with two living units, a spacious terrace and park view. 52 m² living area + 35 m² terrace.

DESCRIPTION

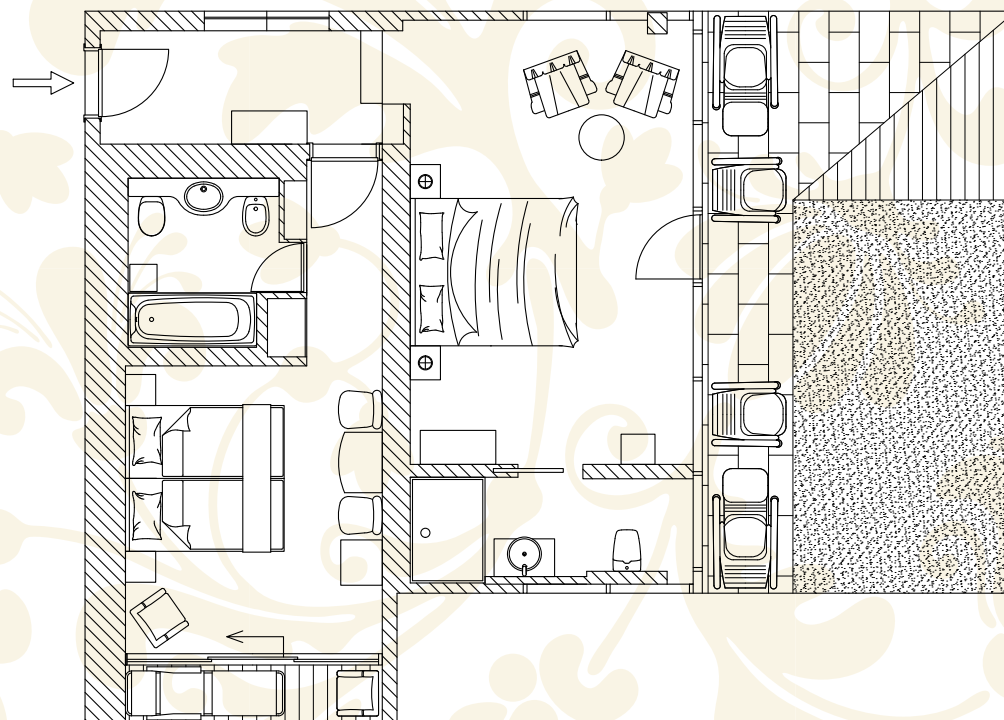
- connecting rooms
- free wi-fi
- TV
- safe
- mini bar
- terrace
- 2x bathroom;
bath + shower

ACCESSORIES

- slippers per person
- bathrobe per person
- 3x towels per person
- 4x bathing/grooming set
per person
- hairdryer

ADDITIONAL SERVICES

- room service
- dry-cleaning service
- ironing
- wake-up calls
- florist
- newspapers request







FAMILY APARTMENT - 24

A new, extraordinary bright, refined family accommodation with two living units, a big terrace and forest view. 52,7 m² living area + 23 m² terrace.

DESCRIPTION

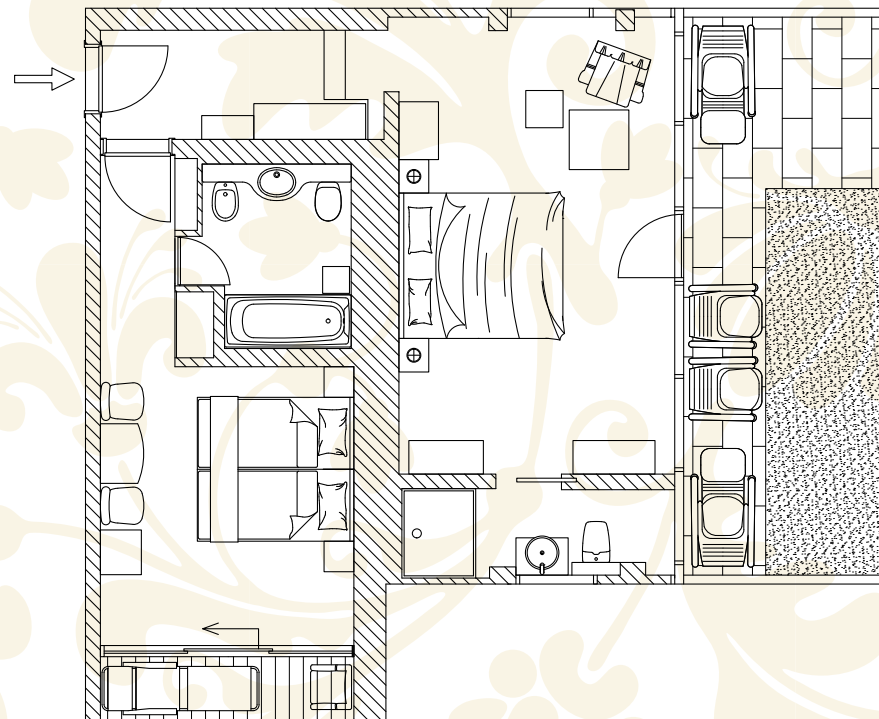
- connecting rooms
- free wi-fi
- TV
- safe
- mini bar
- terrace
- 2x bathroom;
bath + shower

ACCESSORIES

- slippers per person
- bathrobe per person
- 3x towels per person
- 4x bathing/grooming set
per person
- hairdryer

ADDITIONAL SERVICES

- room service
- dry-cleaning service
- ironing
- wake-up calls
- florist
- newspapers request







PRESIDENTIAL SUITE - 22

A comfortable, spacious suite with two living units, connected by a spacious living room; forest view.
77,4 m² living area + 26,3 m² terrace.

DESCRIPTION

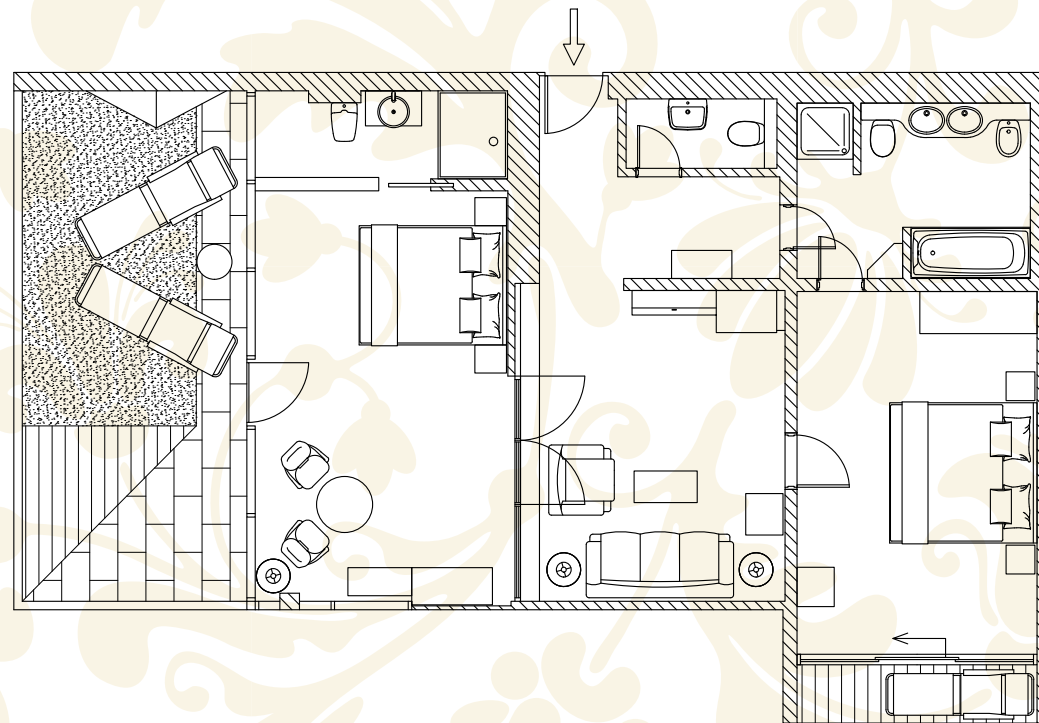
- connecting rooms
- free wi-fi
- TV
- safe
- mini bar
- terrace
- 2x bathroom;
bath + 2x shower

ACCESSORIES

- slippers per person
- bathrobe per person
- 3x towels per person
- 4x bathing/grooming set
per person
- hairdryer

ADDITIONAL SERVICES

- room service
- dry-cleaning service
- ironing
- wake-up calls
- florist
- newspapers request







FAMILY APARTMENT - 21

A new, elegant family apartment with two living units, a big terrace and a park view. 52,8 m² living area + 22,1 m² terrace.

DESCRIPTION

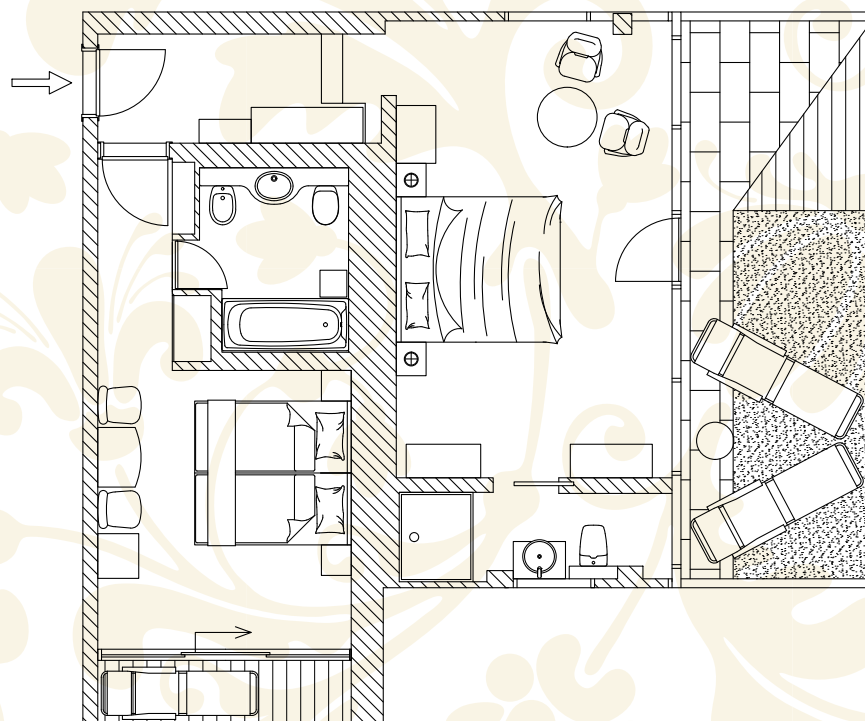
- connecting rooms
- free wi-fi
- TV
- safe
- mini bar
- terrace
- 2x bathroom;
bath + shower

ACCESSORIES

- slippers per person
- bathrobe per person
- 3x towels per person
- 4x bathing/grooming set
per person
- hairdryer

ADDITIONAL SERVICES

- room service
- dry-cleaning service
- ironing
- wake-up calls
- florist
- newspapers request







SINGLE FAMILY APARTMENT - 14

A new, extremely bright and elegant family apartment with two living units, a joint bathroom and a forest view. 48,6 m² living area + 9,9 m² terrace.

DESCRIPTION

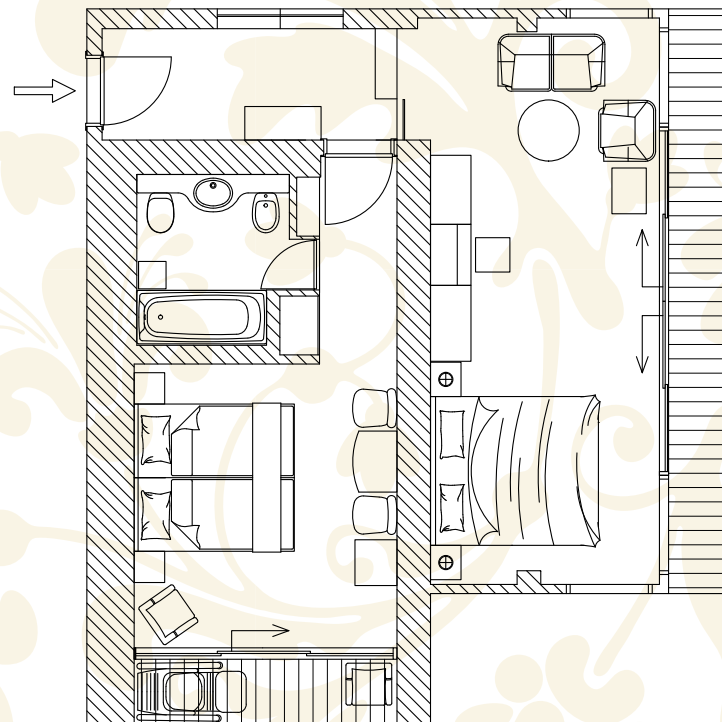
- connecting rooms
- free wi-fi
- TV
- safe
- mini bar
- terrace
- 1x bathroom;
bath

ACCESSORIES

- slippers per person
- bathrobe per person
- 3x towels per person
- 4x bathing/grooming set
- per person
- hairdryer

ADDITIONAL SERVICES

- room service
- dry-cleaning service
- ironing
- wake-up calls
- florist
- newspapers request







FAMILY APARTMENT - 13

A new, wonderful, spacious family apartment with a park view; exquisitely elegant, detailed, with a free-standing stone tub and a spacious terrace. 54,7 m² living area + 36 m² terrace.

DESCRIPTION

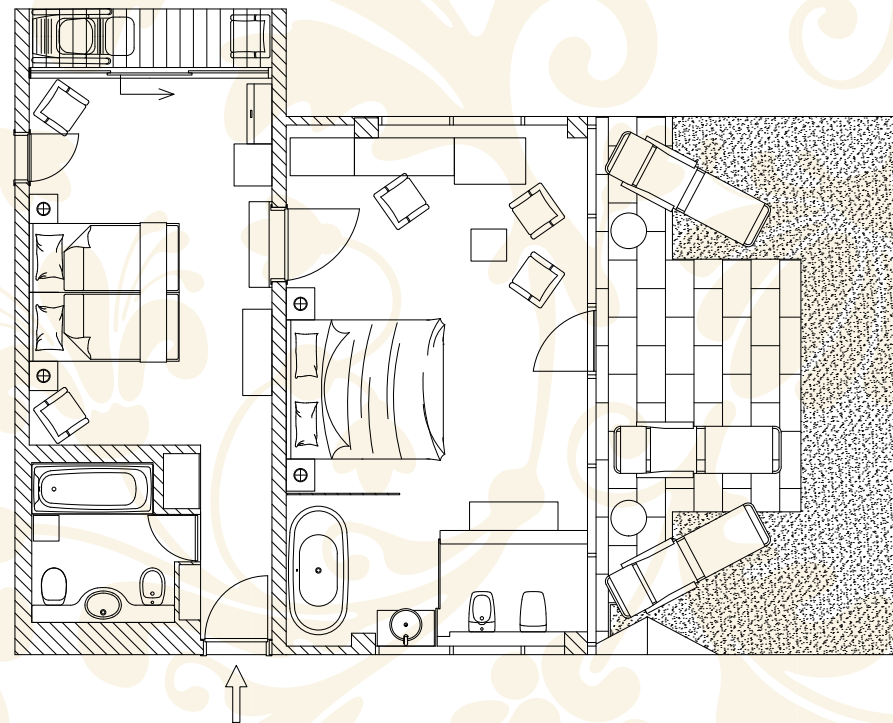
- connecting rooms
- free wi-fi
- TV
- safe
- mini bar
- terrace
- 2x bathroom;
2x bath

ACCESSORIES

- slippers per person
- bathrobe per person
- 3x towels per person
- 4x bathing/grooming set per person
- hairdryer

ADDITIONAL SERVICES

- room service
- dry-cleaning service
- ironing
- wake-up calls
- florist
- newspapers request







DOUBLE FAMILY APARTMENT - 12

A new, extremely bright and comfortable family apartment with two spacious living units, a very big terrace and forest view. 44,6 m² living area + 104 m² terrace.

DESCRIPTION

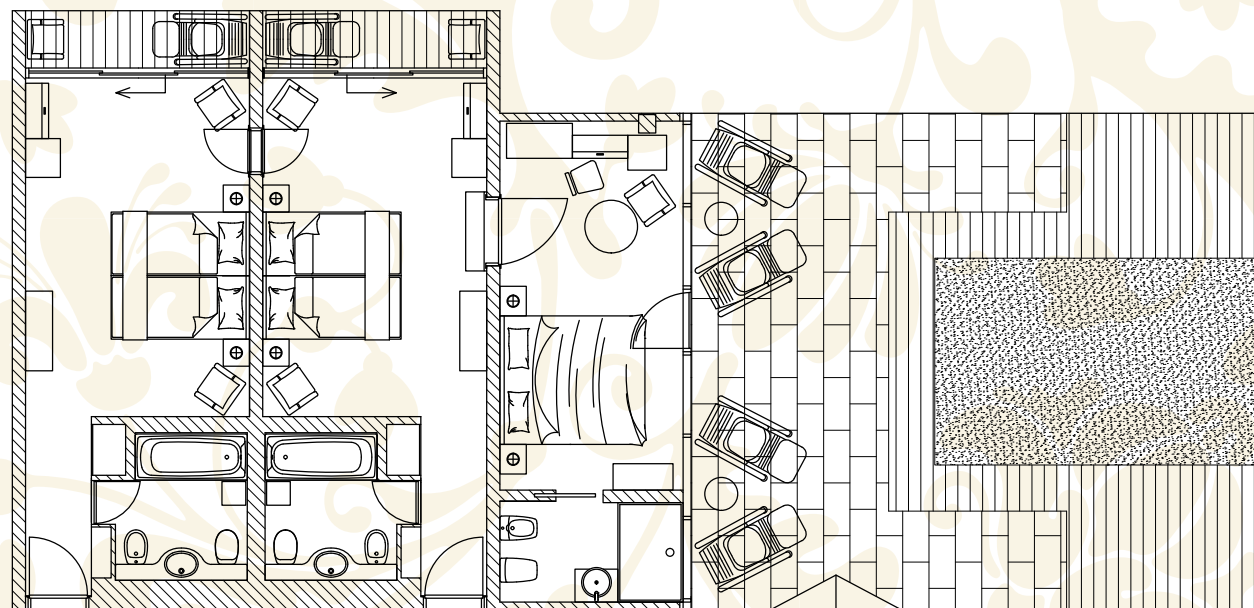
- connecting rooms
- free wi-fi
- TV
- safe
- mini bar
- terrace
- 2x bathroom;
bath + shower

ACCESSORIES

- slippers per person
- bathrobe per person
- 3x towels per person
- 4x bathing/grooming set
per person
- hairdryer

ADDITIONAL SERVICES

- room service
- dry-cleaning service
- ironing
- wake-up calls
- florist
- newspapers request







INDIVIDUAL SAUNA COMPLEX

Experience perfect relaxation and unforgettable moments with your nearest and dearest. 45,7 m² living area + 49 m² terrace.

DESCRIPTION

- IR sauna
- Turkish sauna
- Finnish sauna
- resting place
- terrace
- bath
- shower

ACCESSORIES

- slippers per person
- bathrobe per person
- 1x towel and 1x sheet per person
- hairdryer







WELLNESS

The GH Donat Wellness Centre is open between 8:00 and 20:00 and is located on the ground floor.

- | | | |
|----------------------|-------------------------|----------------------|
| ① fitness | ⑪ private | ⑳ massage room 3 |
| ② private | ⑫ thermopack/undulation | ㉑ massage room 4 |
| ③ entrance to pools | ⑬ thermopack/floating | ㉒ private |
| ④ information desk | ⑭ massage room 1 | ㉓ ayurveda room |
| ⑤ entrance to saunas | ⑮ massage/care room | ㉔ thai massage room |
| ⑥ lobby | ⑯ bath | ㉕ thai massage room |
| ⑦ wardrobe | ⑰ massage room 5 | ㉖ thai massage room |
| ⑧ women toilets | ⑱ massage room 6 | ㉗ solarium |
| ⑨ men toilets | ㉒ private SPA | ㉘ toilets |
| ⑩ private | ㉓ massage room 3 | ㉙ mani/pedicure room |







PRIVAT SPA

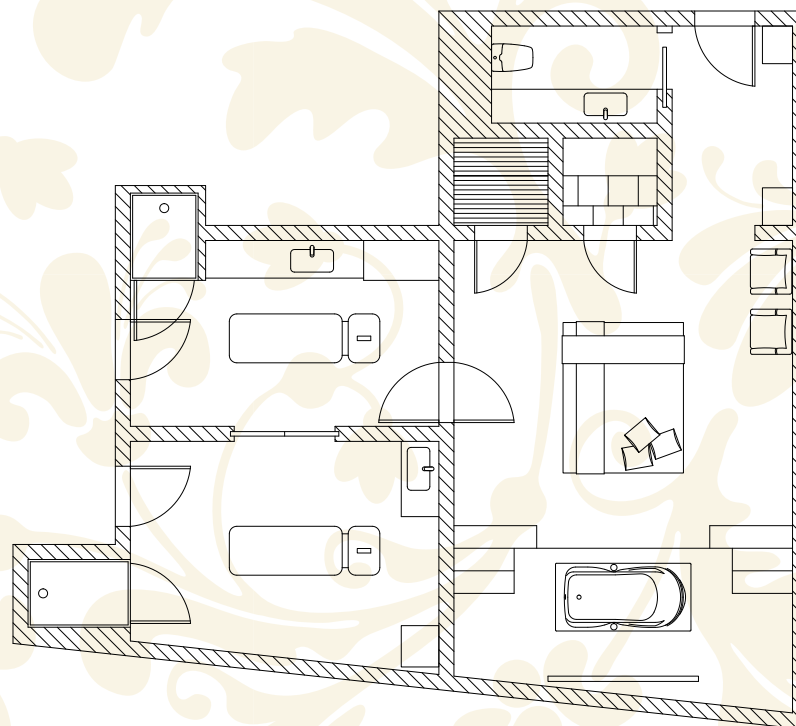
Enjoy in the magical romantic pampering for two. Relax in the intimate, romantic bath with candles, champagne and pleasant music. 61,1 m² living area.

DESCRIPTION

- waterbed
- Turkish sauna
- Finnish sauna
- jacuzzi
- champagne, 2 dcl
- fruits

ACCESSORIES

- 2x slippers
- 2x bathrobe
- 2x towels
- 4x bathing/grooming set
- hairdryer



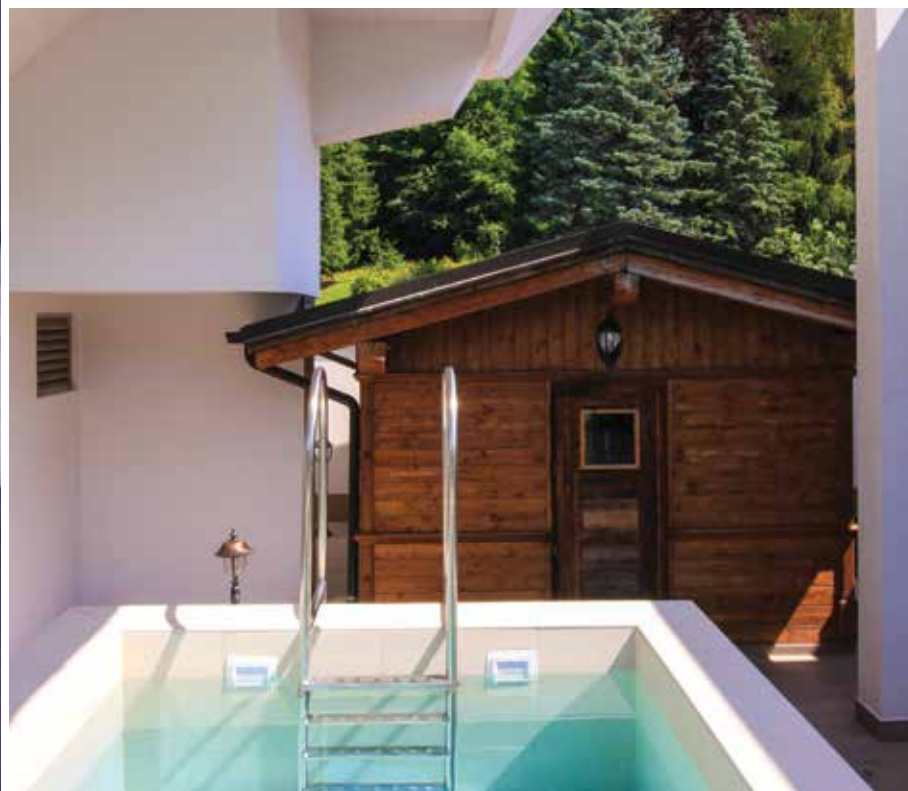


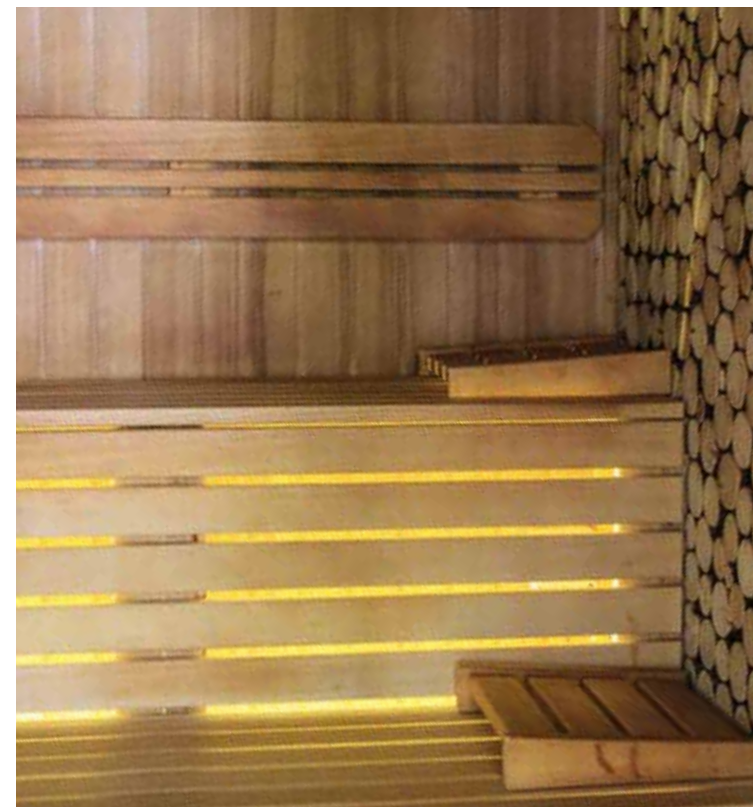
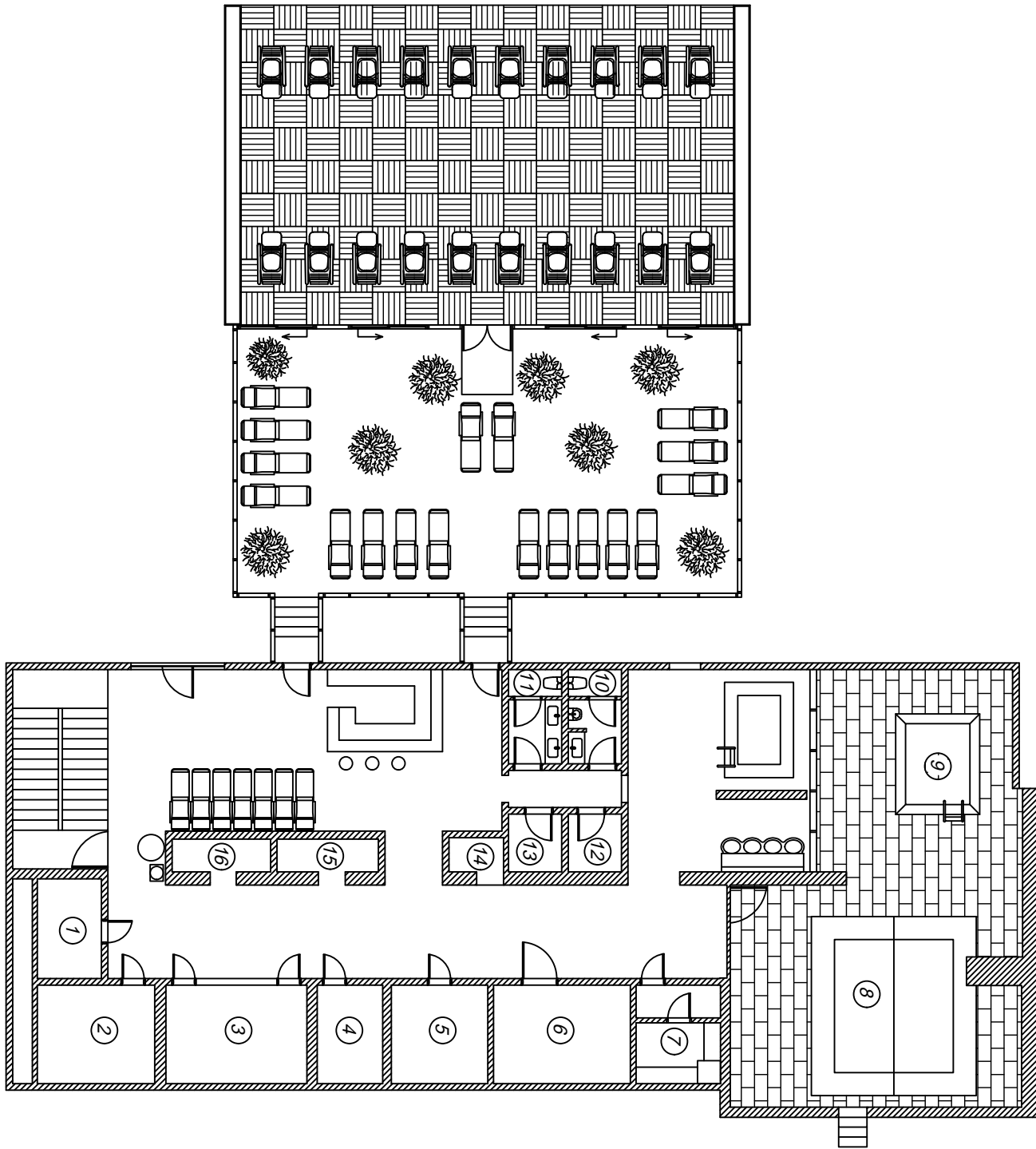


SAUNAS

Saunas can be accessed from the Wellness Centre on the ground floor of the hotel.

- ① bio sauna
- ② Finnisch sauna
- ③ herbal sauna
- ④ IR sauna
- ⑤ Turkish sauna - thalasso
- ⑥ private
- ⑦ snow cave
- ⑧ Russian bath
- ⑨ outdoor pool
- ⑩ men toilets
- ⑪ women toilets
- ⑫ wardrobe
- ⑬ hotel staff
- ⑭ shower
- ⑮ shower
- ⑯ shower



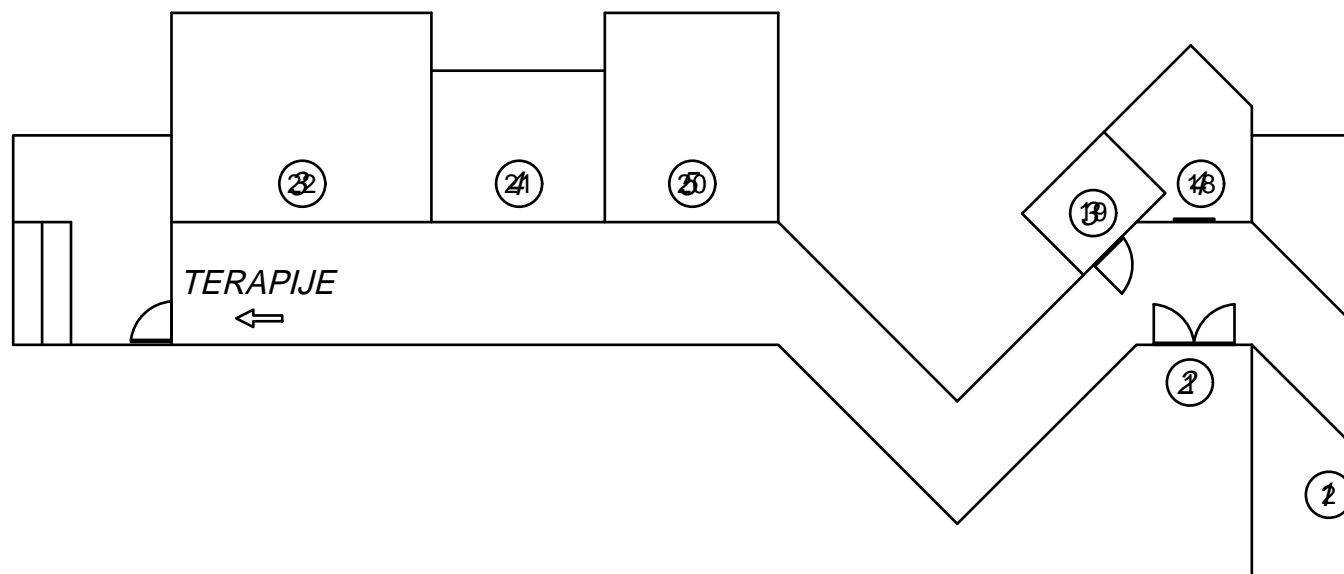


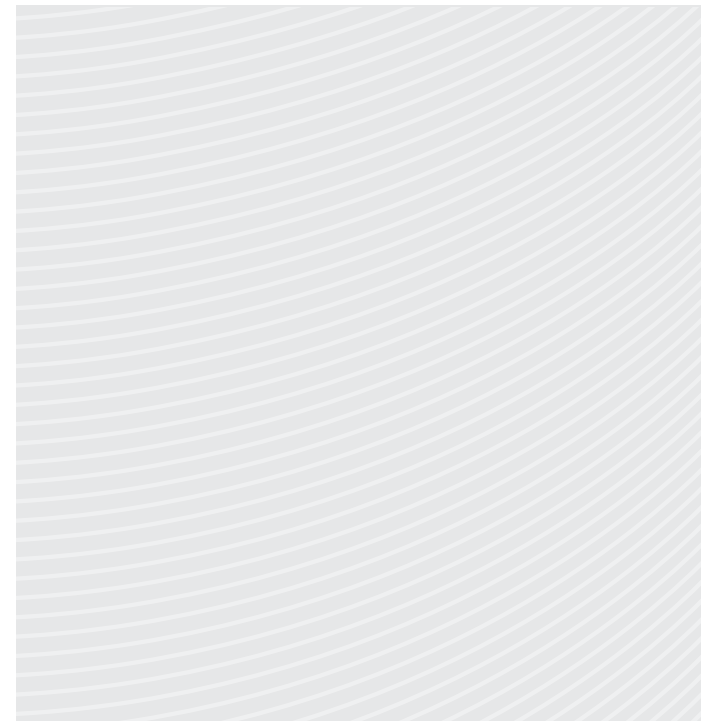
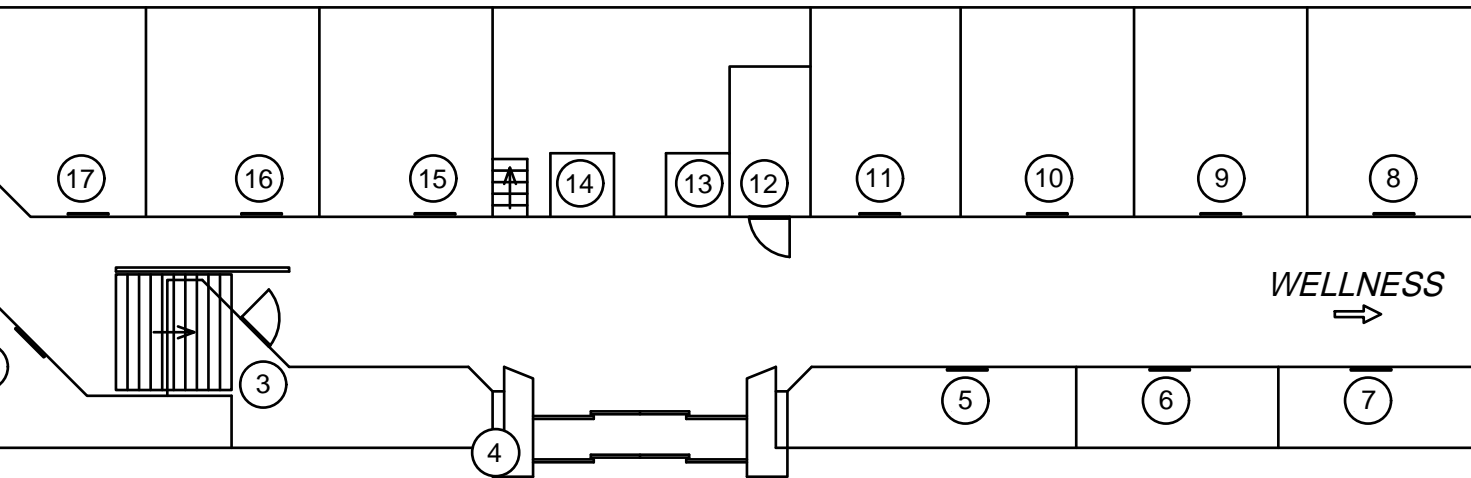


HOTEL STREET

A wide variety of shops selling luxury items can be found on Hotel Street on the ground floor.

- | | | |
|--------------------------------|--------------------------------|----------------------|
| ① Casino | ⑪ Shop | ⑳ Marjetka newsagent |
| ② Adivina home fashion | ⑫ Private | ㉑ Billiard |
| ③ Shop | ⑬ Private | |
| ④ Advertising space - Amon | ⑭ Elevator | |
| ⑤ Caffé & vegetable shop | ⑮ Gallery shop | |
| ⑥ Galvanni accessories | ⑯ S.D.S. Schilani fashion | |
| ⑦ Zlatarna Celje jewelery | ⑰ Lucia Pieri high fur fashion | |
| ⑧ Luna fashion for woman | ⑱ SailoExp marinewear | |
| ⑨ Couture de fleur luxury silk | ㉒ Hairdresser | |
| ⑩ ASBK fashion | ㉓ IFT botique | |







GRAND HOTEL DONAT Superior
Zdraviliški trg 10
3250 Rogaška Slatina
Slovenija

t. +386 (0)3 811 30 00
f. +386 (0)3 811 37 32
@. info@ghdonat.com
www.ghdonat.com

