



The services described below may be affected by restrictions from the health authorities or by containment measures taken in relation to COVID-19.



HOTEL RIU SRI LANKA ★★★★★

AHUNGALLA BEACH

Galle Road · 80562 · Ahungalla · Sri Lanka

Tel: +94 (0) 91 522 0000 · E-Mail: hotel.srilanka@riu.com

GPS: Lat: 6.309359 · Long: 80.032944

ALL INCLUSIVE 24H

All Inclusive 24
by RIU

ROOMS

501

SMOKING POLICY

Non-smoking environment
Only permitted in designated areas

SEASON

Open all year round

Location

Right on the beach	Ahungalla beach	
Closest town	Ahungalla	500 m approx.
Closest city	Bentota	15 km approx.
Closest city	Colombo	90 km approx.
Airport	Colombo Int'l Airport (CMB)	130 km approx.

General info

This newly built hotel has opened in August 2016 and offers 24h All Inclusive. The hotel is located in south of Sri Lanka in the district of Galle, directly on Ahungalla beach.

Building details

NO.	BUILDING	FLOORS	LIFTS	ROOMS	DISTANCE FROM MAIN BUILDING	COMMENTS
1	Main building	5	5	501		

TOTAL: 501 ROOMS

Construction & Renovations

Built in: 2015/16

Riu hotel since: 2016

Environmental best practices

GROUP	MEASURE	COMMENTS
Energy	Low-energy lighting	
Energy	Main switch in guest rooms	
Waste	Environmentally-friendly purchasing policy	
Waste	Minimum use of single portion packs at buffets	
Water	Eco-Friendly towel change policy	
Water	Hot-cold mixer tap	
Water	Use of biodegradable cleaning agents	
Water	WC watersaving flush	

Awards & Certifications

AWARDS & CERTIFICATIONS	YEAR	COMMENTS
TUI Top Quality	2020	2018.
TripAdvisor® Travellers' Choice	2020	
TripAdvisor® Travellers' Choice Best of the Best	2020	
Booking Traveller Review Awards	2020	
Preverisk COVID-19 Hygiene Response	2020	
SATA Best All Inclusive Hotel	2019	
TripAdvisor® Certificate of Excellence	2019	
Loved by guests award/ hotels.com	2019	2018.
HolidayCheck Recommended	2019	2018.


HOTEL RIU SRI LANKA *****
AHUNGALLA BEACH

All Inclusive 24
by RIU

Facilities
Hotel Facilities

TYPE	COMMENTS
Main restaurant	Main restaurant with 2 zones, 'Riti Panna' and 'Ceylon'.
Speciality restaurants	Italian, Asian and Barbecue.
Bars	4 bars.
Pools	3 swimming pools and children's swimming pool with water slides.
Wellness centre	Renova Spa with several treatments, beauty salon, hairdresser and massages, extra charge. Free gym, steam bath & whirlpool.
WiFi throughout the hotel	
RiuLand kid's club	
Riu4U Club for teenagers	
RiuArt atelier	
Discotheque	Vision Discotheque-Karaoke. Free entry and drinks. Entrance is restricted to guests over 18 years old.
Boutique/Kiosk	
Medical service	Doctor's visit on request. Extra charge.
Hotel parking	Limited parking space, 90 spaces parking lot. Parking free of charge.

Reception
Reception staff speak: English · Sinhala

Local languages: Sinhala · Tamil

Local currency: Sri Lanka Rupee

Reception services

TYPE	ON REQUEST	EXTRA CHARGE	COMMENTS
24 hour reception			
Rent a car	✓	✓	
Taxi ordering	✓	✓	Calls for taxi through reception.
Babysitter	✓	✓	
Laundry service	✓	✓	
No pets allowed			

Means of payment

Currency exchange in hotel

Accepted credit cards: Visa · MasterCard · Union Pay

Wellness & Beauty

DESCRIPTION	NAME / LOCATION	NO CHARGE	EXTRA CHARGE	COMMENTS
Spa	Renova Spa		✓	All wellness & beauty facilities offered at Renova Spa.
Beauty salon			✓	
Hairdresser			✓	
Massage rooms			✓	4 massage rooms.
Steam bath		✓		
Whirlpool bath		✓		
Gym		✓		

Remarks

Use of gym, whirlpool bath and steam bath is restricted to guests over 18 years old. Sports shoes are compulsory when using the gym.

External Facilities

TYPE/NAME	DISTANCE APPROX.	COMMENTS
ATM	500 m	Ahungalla.
Bank	10 km	Ambalangoda.
Chemist	500 m	Ahungalla.
Doctor		On request in the hotel.
Hospital	10 km	Roseth Hospital, Ambalangoda.
Public transport		Taxi station.
Shopping centre	10 km	Ambalangoda.


HOTEL RIU SRI LANKA *****

AHUNGALLA BEACH

All Inclusive 24
by RIU

Food & Beverages
Restaurants

NAME	TYPE	NO SMOKING	AIR COND.	OPENING	BUFFET / MENU / SNACKS	COMMENTS
Riti Panna	Main restaurant	✓	✓			
	Breakfast			07.00-10.00h	Buffet	Varied buffet and live cooking stations.
	Lunch			12.00-15.00h	Buffet	Buffet with live cooking stations and assorted desserts.
	Dinner			18.30-22.00h	Buffet	Hot and cold buffet starters. Live cooking stations. Vegetarian options available. Dessert buffet. Themed buffets (three times a week). In Winter: Opening 18.00 - 21.30 h
Ceylon	Main restaurant	✓	✓			
	Breakfast			7.00-10.00h	Buffet	Varied buffet and live cooking stations.
	Lunch			12.00-15.00h	Buffet	Buffet with live cooking stations and assorted desserts.
	Dinner			18.30-22.00h	Buffet	Hot and cold buffet starters. Live cooking stations. Vegetarian options available. Dessert buffet. Themed buffets (three times a week). In winter opening half an hour earlier.
La Forchetta	Italian restaurant	✓	✓			
	Optional dinner			19.00h and 21.00h	à la carte	2 sittings. With reservation. Starters' and desserts buffet, main course à la carte. In winter sittings half an hour earlier.

NAME	TYPE	NO SMOKING	AIR COND.	OPENING	BUFFET / MENU / SNACKS	COMMENTS
Saute	Restaurant					Barbecue for dinner.
	Continental breakfast			10.00- 12.00h	Buffet	
	Lunch			12.00- 15.00h	Buffet	Buffet with live cooking stations and assorted desserts.
	Snacks			15.00- 17.30h	Snacks	
	Optional dinner			19.00h and 21.00h	à la carte	Barbecue. 2 sittings. With reservation. In winter sittings half an hour earlier.
Kaori	Asian restaurant					
	Optional dinner			19.00h and 21.00h	Buffet	2 sittings. With reservation. In winter sittings half an hour earlier.

Bars

NAME	TYPE	COMMENTS
Nuwara	Lobby bar	Opening times 12.00-24.00h.
The Purple	Lounge bar	With terrace. Opening times 18.00-23.00h.
After Hours	Bar	Open from 22.00-07.00h. All Inclusive service 24h.
Flamingos	Poolside bar w/ swim-up bar	Opening times 10.30-18.00h.

Dress code for dinner

Appropriate attire required for dinner.

Remarks

In accordance with Sri Lankan legislation no alcohol will be served in the bars or restaurants of the hotel during the monthly "Poya Day" festival.

Opening and mealtimes are subject to change depending on the season.


HOTEL RIU SRI LANKA *****
 AHUNGALLA BEACH

All Inclusive 24
 by RIU

All Inclusive

ALL INCLUSIVE FACILITIES
All meals, snacks, domestic and imported alcoholic and non-alcoholic beverages in all hotel bars and restaurants.
Regularly refilled minibar.
Free sports, activities and entertainment programme as described.
Free wellness facilities as described.
In-room safe.
WiFi throughout the hotel.
Free entry to the discotheque (drinks included).
Snacks and drinks 24 hours a day.
All hotel guests are required to wear an "All Inclusive" wristband for identification purposes.

Remarks

Mini bar filled w/ mineral water and soft drinks. Regularly refilled minibar (every other day).

In accordance with Sri Lankan legislation no alcohol will be served in the bars or restaurants of the hotel during the monthly "Poya Day" festival.


HOTEL RIU SRI LANKA *****

AHUNGALLA BEACH

All Inclusive 24
by RIU

Outdoor areas

Swimming pools

POOL TYPE	SIZE (SQ M)	FRESH WATER	HEATED IN WINTER	INTEGRATED	COMMENTS
Outdoor pool	700				
Outdoor pool	625				
Outdoor pool	300				
Children's pool	22				With water slides.

Pool area

POOL FACILITIES	DEPOSIT REQUIRED	COMMENTS
Pool towels		
Sun loungers		
Parasols		
Sun terrace		

Garden

Size: 22.000 (sq m)

Beach

Name: Ahungalla Beach

Length of beach: 1,5 km
Area reserved for hotel guests

Beach facilities

BEACH FACILITIES	EXTRA CHARGE	ALSO IN WINTER	COMMENTS
Sun loungers		✓	Free sun loungers on the beach area reserved for the hotel

Remarks

The natural and fine-sandy public beach is surrounded by lush vegetation and invites to do long strolls.


HOTEL RIU SRI LANKA *****

AHUNGALLA BEACH

All Inclusive 24
by RIU

Activities & Entertainment
Sports

ACTIVITY	NO CHARGE	EXTRA CHARGE	HOTEL	DISTANCE APPROX.	COMMENTS
Gym	✓		✓		Sports shoes are compulsory when using the gym. Use of gym is restricted to guests over 18 years old.
RiuFit programme	✓		✓		Group fitness activities in the RiuFit area (every day).

Remarks
Optional sports and facilities nearby (additional charge):

- Various water sports available

The RIU Group has no direct or indirect relationship with external services (especially PARASAILING) and does not assume any liability for them, any contract between them being the exclusive responsibility of the clients themselves.

Entertainment

WHEN?	ACTIVITY	TIMES A WEEK	NO CHARGE	EXTRA CHARGE	COMMENTS
Daytime	RiuLand kids' club (4-7 & 8-12 yrs)	7	✓		Entertainment programme for children age 4-7 and 8- 12 years.
	Daytime entertainment programme for adults	7	✓		
	RiuArt atelier	6		✓	Supplement for materials.

WHEN?	ACTIVITY	TIMES A WEEK	NO CHARGE	EXTRA CHARGE	COMMENTS
Evening	Live music, shows & RIU entertainment	7	✓		
	Discotheque	6	✓		Disco / Karaoke. Opening times 21.00-02.00 h. Free entry to the Vision discotheque and drinks. Entrance is restricted to guests over 18 years old.

Children

FACILITIES	NO CHARGE	EXTRA CHARGE	COMMENTS
RiuLand kids' club (4-7 & 8-12 yrs)	✓		7 times weekly.
Playground	✓		
Cots	✓		Depending on availability.
High chairs	✓		Depending on availability.
Children's pool	✓		22 sq. m., with water slides.
Babysitter		✓	On request.


HOTEL RIU SRI LANKA *****
 AHUNGALLA BEACH

All Inclusive 24
by RIU

Info for disabled guests

Adapted rooms

Adapted rooms for wheelchair user available	✓
Room category	Standard SJSB.
Number of adapted rooms	20
Size of adapted rooms (sq m)	44
Location of adapted rooms (area/floor)	On the ground, 1st, 2nd and 3rd floor.

Remarks

There are 20 SJSB rooms for disabled with 2 beds 135 x 200cm and adapted bathroom facilities available.

Adapted rooms - Door widths

Entrance	92 cm
Bedroom (if there is an extra door)	-
Living room (if there is an extra door)	-
Bathroom	92 cm
Balcony/Terrace	180 cm

Adapted rooms - Bathroom facilities

Bathtub	X
Shower	✓
Step free shower or roll in shower (level entry with no raised lip or step)	✓
Shower seat	X
Support/grab rails in shower	✓
Support/grab rails in bathtub	X
Clear wheelchair turning circle (1.50m diameter) in the bathroom	X
Support/grab rails near WC	✓
Enough wheelchair turning room/min. 0.7m transfer space next to the WC	✓
Washbasin accessible with wheelchair	✓
Entry height of the shower (from floor)	0 cm
Entry height of the bathtub (from floor)	-
Height of the basin	78 cm
Height of the toilet	40 cm

General hotel facilities

Lift available	✓
Lift's door width	80 cm
Lift's depth	138 cm
Possibility to rent a wheelchair or mobility scooter	X

Accessibility of public areas in the hotel

Not all public areas are accessible for wheelchair user

Public areas which are not accessible by wheelchair:

AREA	NUMBER OF STEPS
Kids' area	-
Activity pool	-

Accessibility of hotels' swimming pool

At least one swimming pool accessible	X
Stairs - number of steps	5
Stairs with handrail	✓
Ladder - number of steps	-
Ramp available	✓
Ramp with handrail	✓
Pool lift available (on request)	X
Accessible bathroom near the swimming pool (distance)	25 m

Additional facilities in hotel

Location of additional toilets for wheelchair user if available	Lobby.
---	--------

Hotel location and environment

Surrounding areas of the hotel easily accessed by wheelchair users	✓
Flat	✓
Hillside	X
Paved sidewalks and streets	✓
Flat landscape	✓
Slightly rising or descending landscape	✓
Paved way to the beach promenade	X
Paved way to the ocean at the beach	X
Wheelchair access to the sea	X

Facilities of non-adapted rooms

Specifications for [Double standard room](#)

Bathtub	X
Shower	✓
Roll in shower/shower accessible for wheelchair	X
Shower seat	X
Support/grab rails in the shower	X
Support/grab rails in the bathtub	X
Support/grab rails near WC	X
Enough wheelchair turning room/floor space next to the WC	X
Washbasin accessible for wheelchair	X
Walk in shower (steps or raised lip)	✓
Step free shower (level entry with no raised lip or step)	X
Door widths - Entrance	92 cm
Bedroom (if there is an extra door)	-
Living room (if there is an extra door)	-
Bathroom	92 cm
Balcony/Terrace	170 cm
Number of standard rooms located on the ground floor	15

Please contact hotel if more detailed information is needed.



HOTEL RIU SRI LANKA *****
AHUNGALLA BEACH

All Inclusive 24
by RIU

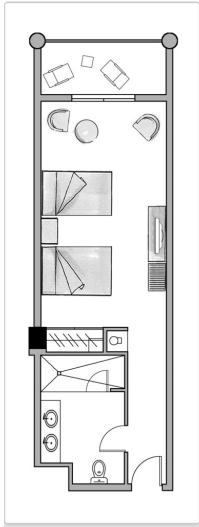
RIU INTERNAL CODES	RIU STANDARD DESCRIPTION	SURFACE EXCLUDING BALCONY (sq m)	SEA VIEW	LATERAL SEA VIEW	BATHROOM WITH SHOWER	BATHROOM WITH SHOWER	OPEN BATH WITH SHOWER	DOUBLE BATH AREA/SEP. W.C.	SPECIAL WASHBASIN	HAIRDRYER	TELEPHONE	WIFI	TV (Sat/cable)	CENTRAL AIR CONDITIONING	CEILING FAN	IN-ROOM SAFE	MINIBAR	ELECTRIC KETTLE	1 BEDROOM	2 BEDROOMS	SITTING AREA	INTEGRATED LOUNGE	SEPARATE LOUNGE	2 BEDS - SIZE: 135 x 200 cm	1 BED - SIZE: 135 x 200 cm	SOFA	SOFA BED	BALCONY/TERRACE	WHIRLPOOL ON TERRACE	COMMENTS
SJMB	Junior suite sea view	38	✓	✓		✓	✓	✓	●	✓	✓	✓	✓	✓	✓	✓	✓	✓					✓			✓			There are also rooms with 2 bed 135 x 200 cm. Some rooms have sofa bed.	
SJSB	Junior suite	38		✓		✓	✓	✓	●	✓	✓	✓	✓	✓	✓	✓	✓	✓					✓			✓			There are also rooms with 2 bed 135 x 200 cm. Some rooms have sofa bed.	
SJLB	Junior suite lateral sea view	38	✓	✓		✓	✓	✓	●	✓	✓	✓	✓	✓	✓	✓	✓	✓					✓			✓			There are also rooms with 2 bed 135 x 200 cm. Some rooms have sofa bed.	
SJME	Superior Junior suite	46	✓		✓	✓	✓	✓	●	✓	✓	✓	✓	✓	✓	✓	✓	✓	✓	✓		✓			✓	✓			All bathrooms are with bathtub and shower cabin.	
F2SB	Family suite	77			✓	✓	✓	✓	●	✓	✓	✓	✓	✓	✓	✓	✓	✓	✓				✓		✓	✓			There are 2 bedrooms, one with king-size bed (180 x 200cm) and sofa bed, the other one with 2 beds (135 x 200cm). All family suites with 2 bathrooms (one with shower, one with bathtub).	
SUMZ	Suite	55	✓		✓	✓	✓	✓	✓	●	✓	✓	✓	✓	✓	✓	✓	✓	✓	✓	✓		✓	✓	✓	✓				
SSMZ	Senior suite	88	✓		✓	✓	✓	✓	✓	●	✓	✓	✓	✓	✓	✓	✓	✓	✓	✓	✓		✓	✓	✓	✓	✓			Second WC.

TOTAL: 501 ROOMS

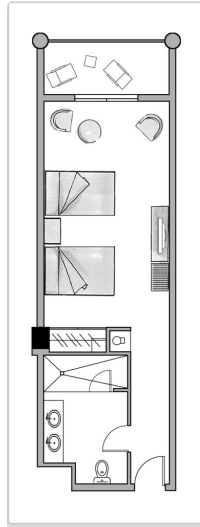
✓ Available, free of charge. ● Available, additional charge.

Plans

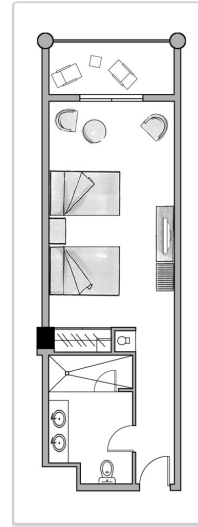
Images for guidance purposes



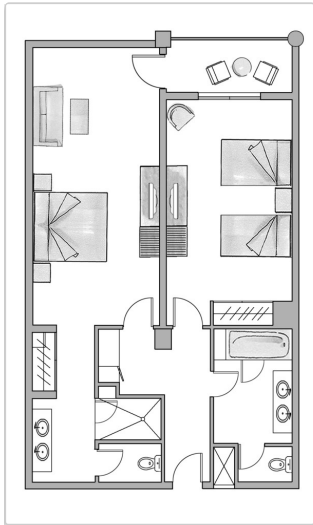
SJSB - Junior Suite



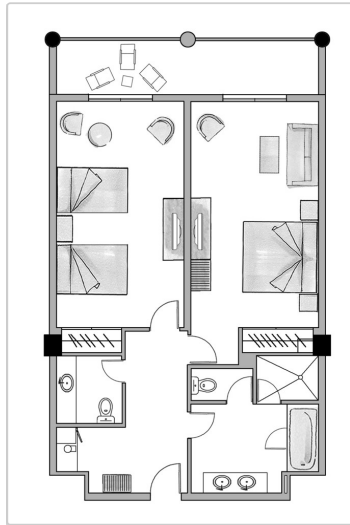
SJMB - Junior Suite



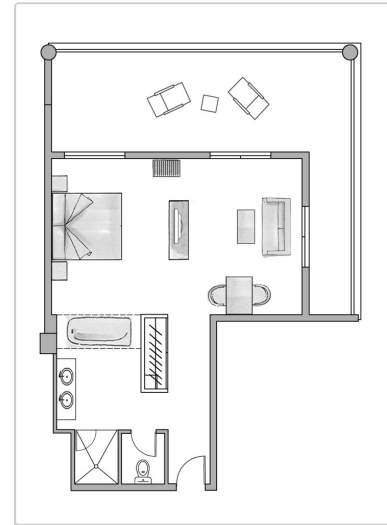
SJLB - Junior Suite



F2SB - Family suite



F2SB- - Family suite



SUMZ - Suite

Features

Current : 220V

Remarks

Mini bar filled w/ mineral water and soft drinks. Regularly restocked minibar (every other day).