



## RIISING TO THE OCCASION

We've taken our legendary Thai hospitality to a whole new level, combined it with breathtaking views, luxuriant suites and celebrated restaurants and bars. The result is an indulgent five-star hotel experience where every occasion is unforgettable and every moment award-winning.

lebua's 136 expansive and elegantly-appointed suites, each with separate bedroom and living room, offer spectacular city and river views from their balconies high above Bangkok's vibrant sightseeing, shopping and business districts. From its prime location near the Chao Phraya River, BTS SkyTrain and expressway, the entire city is within reach, with many attractions just minutes away.

Indulgence pervades the air as your every personal and professional need is attended to with unwavering, unobtrusive service. We take care of the details, so you can savor the moments – and award-winning moments await at every turn.

## LOCATION

- On the corner of Charoen Krung and Silom Rd., a short stroll from the Chao Phraya River
- 40 mins drive to Suvarnabhumi International Airport
- 15 mins drive to the MRT (3 kms)
- 10 mins walk to the BTS Sky Train Saphan Taksin station
- 10 mins walk to convenient shuttle ferries
- Easy access via expressways that connect north and south Thailand

## ROOM FEATURES

- Hair dryer
- High-speed wired & wireless Internet
- Interactive TV & DVD player
- Refrigerator
- Personal safe
- Telephone with voicemail
- Washer & dryer\*

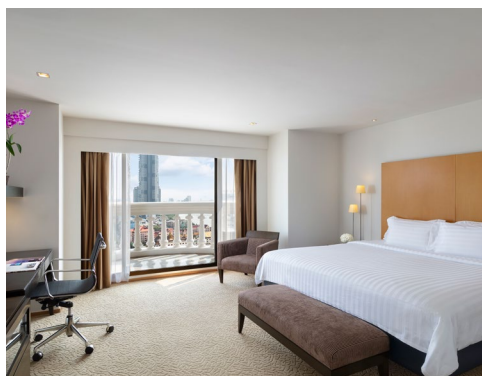
\*In two and three-bedroom suites

## ADDITIONAL SERVICES

- Babysitting (24 hours' notice)
- Concierge
- Daily turndown service on request
- Doctor on call (24 hours)
- In-suite dining (24 hours)
- Laundry & dry cleaning
- Limousine service
- Shoeshine service on request
- Tuk Tuk Service to BTS Sky Train from 7am to 5pm
- Valet parking

## ACCOMMODATION

lebua Suite Categories	Area (m2)
lebua Suite City View	66
lebua Suite River View	66
lebua Suite 2 Bedroom	186
lebua Suite 3 Bedroom	266
Premium Suite City View	66
Premium Suite River View	66



## FACILITIES

### Fitness Center & Swimming Pool **M Floor**

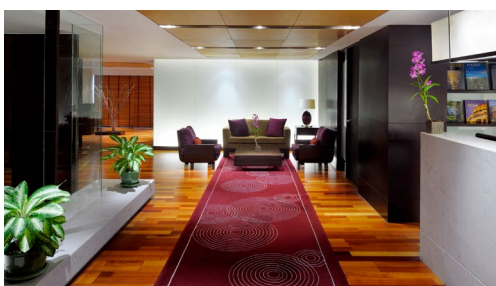
Overlooking an open-air pool, lebua's fitness center offers a range of modern exercise fitness equipment.

### Business Center **51<sup>st</sup> Floor**

State-of-the-art business center provides total solutions and support for the executive, from internet connection, message, mail and postal services, to personalized secretarial and administrative assistance and conference rooms.

### Café Mozu **M Floor**

Overlooking an open-air pool, lebua's fitness center offers a range of modern exercise fitness equipment.





## CONFERENCES & FUNCTIONS

lebu a at State Tower's accessibility in the center of the city, a wide choice of function rooms and ballrooms that can accommodate up to 900 guests, and exceptional catering from the award-winning restaurants at The Dome, have made it downtown Bangkok's venue of choice for occasion, from weddings and social galas to product launches and staff parties, fashion shows and press conferences.

The legendary city and river views, lavish handpicked flower arrangements, winding staircases, and hanging chandeliers make a timeless and elegant statement, and on every occasion unforgettable.

LEVEL	FUNCTION ROOMS	DIMENSIONS (m)	HEIGHT (m)	AREA (m <sup>2</sup> )	THEATRE	CLASSROOM	U-SHAPE	COCKTAIL	BUFFET	BANQUET
1	Malika (M Floor)	9 x 13.50	4	120	50	30	25	50	30-40	50
	Kamala	9 x 9	4	80	30	24	15	30	30	30
	Nalini	9 x 9	4	80	30	24	15	30	30	40
	Pushkara Ballroom	27 x 13.50	4	525	200	100	70	300	150	150
2	Aravinda (M Floor)	22.5 x 13.50	4	390	200	100	70	300	150	120
	Padmini	9 x 9	4	80	30	24	15	30	10	30
	Padmana	4.50 x 7	4	30	20	-	-	-	-	10
	Padmavati	13.50 x 9	4	120	40	24	24	50-70	50	50
	Padma Ballroom	31.50 x 13.50	4	245	150	70	60	300	150	150

## THE WORLD'S FIRST AND ONLY VERTICAL DESTINATION AT THE ICONIC LEBUA



**MEZZALUNA** 🌟🌟 **65<sup>th</sup> Floor**  
 is a two-star Michelin restaurant that received the 2023 Michelin Thailand sommelier award. It is situated on the 65<sup>th</sup> floor, providing an exceptional view of Bangkok's skyline. The restaurant offers innovative French cuisine with a Japanese influence, prepared and served with passion and pride.



**CHEF'S TABLE** 🌟🌟 **61<sup>st</sup> Floor**  
 This Two-Star Michelin restaurant boasts center stage cooking, utilizing the finest ingredients to create classic French cuisine. The Service Award recognized by Michelin adds to the dining experience, along with the most exceptional wine selection that perfectly complements the flavors of each course.



**SIROCCO** **64<sup>th</sup> Floor**  
 is an alfresco restaurant, which has won the highest awards globally. It offers spectacular views and serves mouth-watering dishes with exceptional service. The restaurant also provides exclusive products, creative cocktails, and fine wines that can be enjoyed while feeling the gentle tropical winds.



**BREEZE** **52<sup>nd</sup> Floor**  
 offers a mesmerizing experience above the Bangkok skyline, where guests can enjoy authentic Chinese cuisine and admire the stunning views while being captivated by the restaurant's breathtaking design.



**LEBUA NO.3** **52<sup>nd</sup> Floor**  
 offers a unique sensory experience with its design that incorporates light, space, and sound. From the moment you enter, you will start creating unforgettable memories. The bar has three circular bars that offer vodka, gin, and caviar. Moreover, the digital dance floor with stunning views of Bangkok allows you to dance as if nobody is watching.



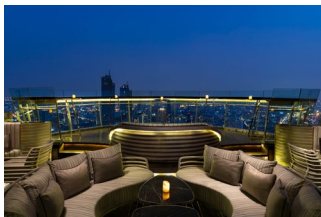
**SKY BAR** **64<sup>th</sup> Floor**  
 Indulge in our mixologist's delectable and unexpected cocktails while gazing at the city's sparkling lights below and the stars shining above at Sky Bar.



**PINK BAR** **61<sup>st</sup> Floor**  
 is a cozy and romantic setting that blends love and intimacy with its selection of cocktails and bubbles. Notably, it is the only Rare Bar in Thailand to serve Rare Champagne by the glass, making it a unique experience.



**DISTIL** **64<sup>th</sup> Floor**  
 The experience at DISTIL is not just about enjoying magical cocktail concoctions and tasty treats. It's also about seeing and being seen, while the DJ compiles great music to enhance your experience. Additionally, you can enjoy the daily light show provided by Bangkok while sipping on your drink.



**ALFRESCO 64** **64<sup>th</sup> Floor**  
 A Whisky bar, on the 64<sup>th</sup> floor of the Tower Club, is the highest open-air whisky bar in the world. Whiskey connoisseurs and novices alike can enjoy the ultimate whisky-drinking experiences while soaking in magnificent views of Bangkok's city skyline and the Chao Phraya River.



**FLÛTE** **64<sup>th</sup> Floor**  
 Bubbles taste even better at the highest open-air Champagne bar in the world. If you don't believe us – come try the exclusive selection of premium Champagnes, caviar, oysters and delicious cheese while live jazz plays.

## LEBUA HOTELS AND RESORTS

lebu a Hotels and Resorts is an international luxury brand that operates distinct hotels, fine restaurants, and stunning bars. The company's lodging collection features Bangkok's best-performing luxury hotels (Tower Club at lebu a and lebu a at State Tower), magnificent properties in India (lebu a Lucknow and lebu a Corbett), and an exclusive property in New Zealand (Lake Okareka Lodge by lebu a).