



Howard Johnson[®]

BY WYNDHAM

JC Pattaya

A Smile
• IN EVERY •
TOWN



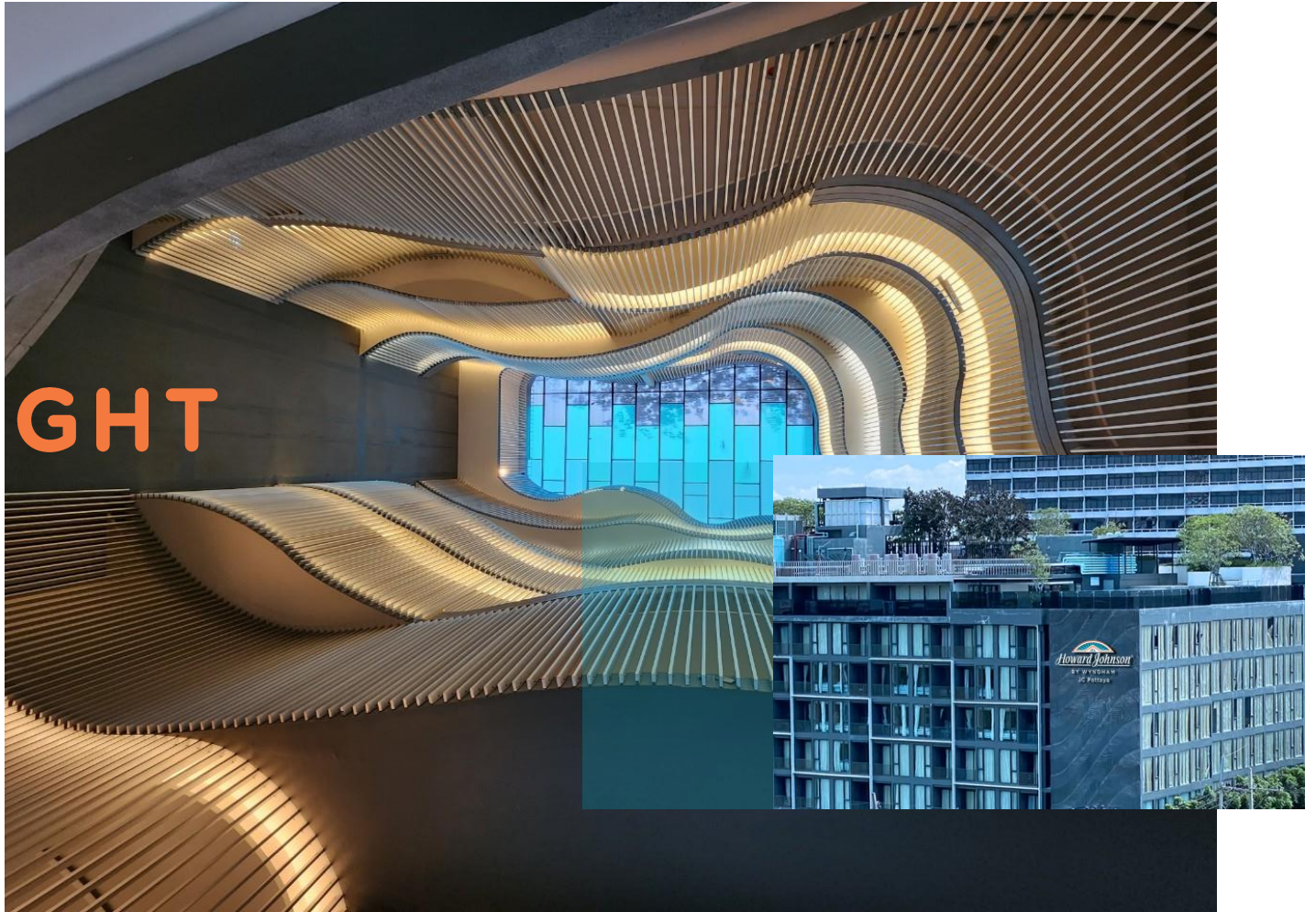
In every **Howard Johnson by Wyndham**, no matter the city or town, we hope your stay leaves you with the same unforgettable souvenir—smiles that last a lifetime.

You can count on us when your family wants to take a trip without feeling like they've gone too far from home. It's the same warm, friendly experience we've offered for decades—because we know that honest hospitality never goes out of style.

Whether it's your first time here or you've lost count, you'll feel right at home as a part of our **Howard Johnson** community.

THE FASCINATING
SUNSETS ARE THE
ONES WE SHARE
TOGETHER.

HOTEL HIGHLIGHT



Can enjoy magnificent ocean panoramas over the tropical islands in the Gulf of Thailand. With its idyllic location at beautiful Na Jomtien beach,

Howard Johnson is positioned approximately midway along the expansive nine kilometres of Jomtien Bay and is just 100 meters walk from the sandy tropical beach.

Conveniently located to the vibrant seaside tourism hub of Pattaya City just 15 minutes south, this ideal location offers a more tranquil environment for residents and tourists alike, surrounded by natural beauty and fresh sea breezes.



Room categories	Size	No. of Rooms
Superior	22 Sqm.	23
Superior Balcony	26 Sqm.	125
Superior Ocean View	22 Sqm.	24
Family Connecting Room	52 Sqm.	6
Superior Garden (Pet Friendly)	26 Sqm.	9

GETTING THERE:

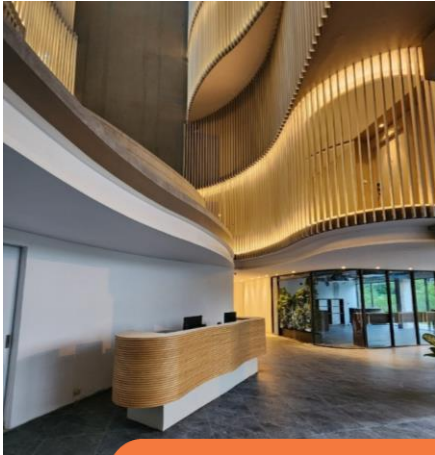
- From Suvarnabhumi Airport (132 km), a 90-minute drive via limousine or taxi transfer to the hotel.
- From U-Tapao International Airport (33 km), a 25-minute drive to the hotel.



ROOF
TOP

LOBBY

HOTEL LOBBY



ROOM

SUPERIOR ROOM



22 sqm.
Superior Room
offering style
and comfort.

With excellent
everything
needed for a
delightful stay
at our Pattaya.

SUPERIOR BALCONY ROOM



26 sqm.
Superior Room
with Balcony
offering style
and comfort.

With excellent
everything
needed for a
delightful stay
at our Pattaya.

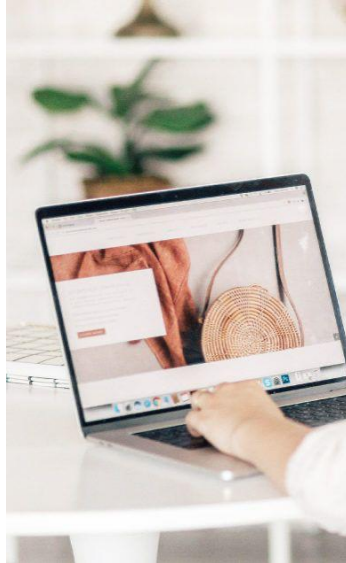
SUPERIOR OCEAN VIEW



26 sqm.
Superior Room
offering style
and comfort.

Sea Views and
Balconies and
afford the best
views the Gulf
of Thailand

ROOM
FEATURES



Free Internet
Wi-Fi



Mini bar, coffee and
tea making facilities

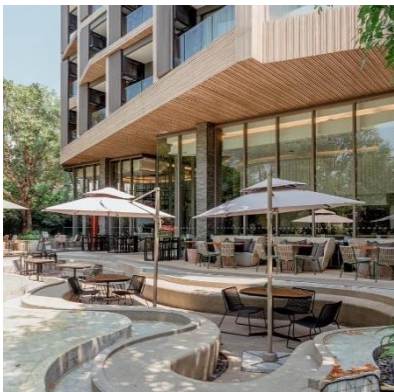


In-room
amenities



**FACILITI
ES**

THE ROCKS RESTAURANT



THE ROCKS (Bayphere) | 1st floor.
Breakfast Buffet 06:30 - 10:30Hrs.
All Day Dining 11:00 - 22:00Hrs.
(A la carte)

LUNAR ITALIAN RESTAURANT



LUNAR ITALIAN (Bayphere) | 8th floor.
Breakfast 06:30 - 10:30Hrs. (A la carte)
Dinner 18:00 - 22:00Hrs. (A la carte)

THE ROCKS CAFÉ



THE ROCKS CAFÉ (Bayphere) | 1st floor.
All Day Dining 07:00 - 22:00Hrs.
(A la carte)

kaBARna BEACH BAR



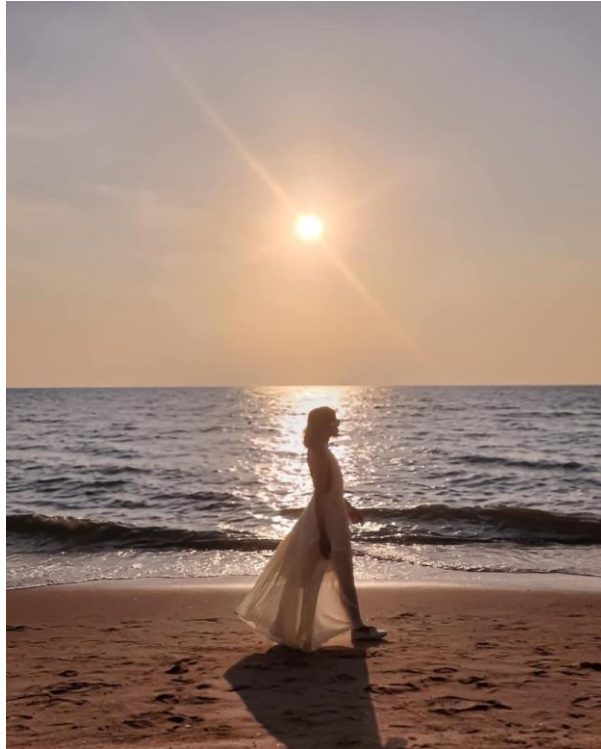
kaBARna BEACH BAR
Open daily Time 10.00 -
19.00Hrs.
(A la carte)

MEETING &
EVENT
SKYPHERE



THE ART OF MEETING
YOUR HIGHEST
EXPECTATIONS

BEACH



SWIMMING POOL

**NEARBY
ATTRACTI
ON**

NEARBY ATTRACTIONS



COLUMBIA PICTURES AQUAVERSE (12 Km.)

Family-friendly recreational park featuring water rides, pools & a variety of dining options



LEGEND SIAM PATTAYA(15 Km.)

The all-in-one destination close to Pattaya City which has a cultural theme park, shopping, learning center, meeting, and event space with a total area of 164 rai, is suitable for all ages, and a good place to experience the Thai style and tradition.

NEARBY ATTRACTIONS



PATTAYA FLOATING MARKET (5 Km.)

Floating Market 4 Regions Pattaya, a tourist attraction in conservation of Thai arts and culture New in the heart of Pattaya, this place is the center of cultural tourism. that simulates a simple Thai way of life Learn about the traditional sufficiency way that has been bound by the river from the past to the present



NONG NOOCH TROPICAL GARDEN (15 Km.)

Nong Nooch tropical gardens close to Pattaya is the largest botanical garden in South East Asia. The vast gardens are set in an area of around 600 acres, that originally was to be used as a plantation to grow local fruits.

NEARBY ATTRACTIONS



**CHEECHAN GOLF COURSE
(12 Km.)**



**SIAM COUNTRY CLUB
PATTAYA (18 Km.)**

It is a championship golf course. And the international standard 18 holes is now a field for competitions.[cc](https://www.siamcountryclub.com)



Pavee Lertvalaikul (Koi)
Cluster Director of Sales & Marketing
Mobile: : +66-98-223-6696

Email : : dosm@baypherehotel.com

Howard Johnson By Wyndham JC Pattaya
159 Na Jomtien 18 Road | Sattahip |
Chonburi | 20250 | Thailand
Phone: +663 307 3900
Fax +663 307 3999



Howard Johnson[®]

BY WYNDHAM

JC Pattaya