

**SHORT DESCRIPTION**

Join us for a festival atmosphere during the days of the Full Moon Party or relax with us throughout the month when the volume eases and Haad Rin returns to a peaceful village. Choose the Koh Phangan experience that suites you best, at Explorar Koh Phangan

**LOCATION**

Located on the secluded Haad Rin Nai Beach with daily sunsets and views across to Koh Samui. A short 10 minute walk to Haad Rin Village & Pier (with direct links to Samui International Airport) yet far enough to retreat to enjoy a more sophisticated vacation, accompanied by only other adult Guests, guaranteed by our 16+ age concept.

117/21 Rin Nai Beach, Moo 6, Bantai,  
Koh Phangan, Suratthani 84330, Thailand

Tel +66 (0) 77 951 567  
Fax +66 (0) 77 951 566  
stay.kohphangan@explorarhotels.com

117/21 Rin Nai Beach, Moo 6, Bantai,  
Koh Phangan, Suratthani 84330, Thailand



**ROOM TYPES - 52 UNITS ALL AGENTS SALES / 20 UNITS ONLINE ONLY**

- |                                |                                  |                                |
|--------------------------------|----------------------------------|--------------------------------|
| 06 STUDIO TERRACE WITH TERRACE | 16 DELUXE TERRACE WITH TERRACE   | 01 SEA VIEW SUITE WITH TERRACE |
| 11 SUPERIOR                    | 16 DELUXEPLUS WITH TERRACE       | 01 2 BEDROOM SEA VIEW VILLA    |
| 13 SUPERIOR TERRACE            | 04 DELUXE POOL VIEW WITH TERRACE | GROUND FLOOR                   |
|                                | 04 DELUXE SEA VIEW WITH TERRACE  | UPPER FLOOR                    |
|                                |                                  | NOT AVAILABLE WITH NET RATES   |

**CHOOSE YOUR EXPERIENCE**

ATMOSPHERE  
PERIOD  
AVERAGE AGE GROUP  
USUAL GUEST TYPE

**FULL MOON**

Party & Festival  
3 days per month  
20 – 35 years old  
Mixed; couples, friends and solo

**OFF FULL MOON**

Relaxation  
27 days per month  
25 – 55 years old  
Mainly Couples

**FACILITIES**

- THE MARKET RESTAURANT**  
Seating Capacity: 50  
Service Hours: 07:30h – 22.30h
- SWIM-UP POOL BAR**  
Seating Capacity: 16  
Service Hours: 10:30h – 23.00h
- 25M INFINITY POOL**  
175 m<sup>2</sup> (25m x 07m x 1.35m)  
Service Hours: 07:30h – 22.30h
- THE EXCHANGE**  
Co-working space, open 24/7

- 50M RESERVED SUNSET BEACH**  
Furnished with sunbeds and beanbags  
Service Hours: 07:30h – 22.30h
- FREE YOGA**  
Complimentary Daily Yoga Classes  
Service Hours: 17:00hrs – 18.00 hrs
- GYM**  
Air-Conditioned Room,  
Service Hours: 07:30hrs – 23.00 hrs
- EXHALE SPA**

**OTHER SERVICES**

- 24hrs Reception & Security
- Free Porter/Concierge
- International Guest Service Team
- Transfers · Shuttles
- Tour & Excursion Parking Spot
- Room Service · Turn-Down Service WIFI ·
- Dinner at the Beach

13 X SUPERIOR ROOM WITH TERRACE



A ground-floor 32m<sup>2</sup> room including a large front terrace, complete with outdoor table and chair set, that opens out onto the resort gardens and grounds.

- Location** ground floor of a 2 storey building
- View** resort gardens
- Size** 32m<sup>2</sup>
- Bedding** double or twin bed  
(extra 3rd bed available upon request)



16 X DELUXE ROOM WITH TERRACE



A 32m<sup>2</sup> adjoining bungalow-style room that provides a large terrace, complete with outdoor table and chair set, that opens out onto the resorts gardens and grounds.

- Location** central rooms of adjoining units of four within the resort gardens
- View** resort gardens
- Size** 32m<sup>2</sup>
- Bedding** double bed or twin beds  
(extra 3rd bed available upon request)



16 X DELUXE PLUS ROOM WITH TERRACE



A spacious 36m<sup>2</sup> corner bungalow-style room that provides a studio space with working & make-up desk and a large terrace, complete with outdoor table and chair set, that opens out onto the resorts gardens and grounds.

- Location** corner rooms of adjoining units of four within the resort gardens
- View** resort gardens
- Size** 36m<sup>2</sup>
- Bedding** double bed or twin beds  
(extra 3rd bed available upon request)



4 X DELUXE POOL VIEW ROOM WITH TERRACE



Located beachfront a spacious ground-floor 36m<sup>2</sup> room that provides a bathtub, working & make-up desk and a large terrace, complete with outdoor table and chair set, that opens out onto the resort's beachfront infinity pool with sunset sea views.

- Location** ground floor of a 2-storey building
- View** infinity pool, resort gardens, partial sea view
- Size** 36 m<sup>2</sup>
- Specials** bath tub
- Bedding** double bed or twin bed (extra 3rd bed available upon request)



4 X DELUXE SEA VIEW ROOM WITH BALCONY



A 36m<sup>2</sup> spacious upper-floor beachfront room complete with working & make-up desk, a large terrace with outdoor table & chair set and provides an outdoor bathtub that boast views of Koh Samui and breathtaking sunsets.

- Location** 2nd floor of a 2-storey building
- View** sea view, sunset beach and infinity pool
- Size** 36m<sup>2</sup>
- Bedding** double bed
- Specials** bath tub on the balcony



GENERAL ROOM AMENITIES

- Wall-mounted Flatscreen TV
- Wi-Fi & LAN / Internet / Telephone
- Safety Box (15" Laptop Size)
- Airconditioning
- Bathrobes / Hairdryer / Bathroom Amenities
- Closet / Umbrella / Flashlight / Laundry Bag
- Tea and coffee making facilities
- Smoke Detector

1 X SEA VIEW SUITE

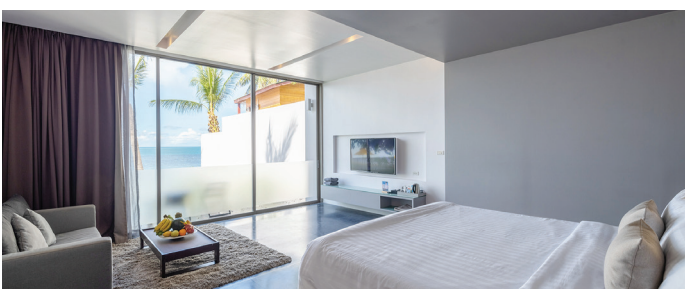
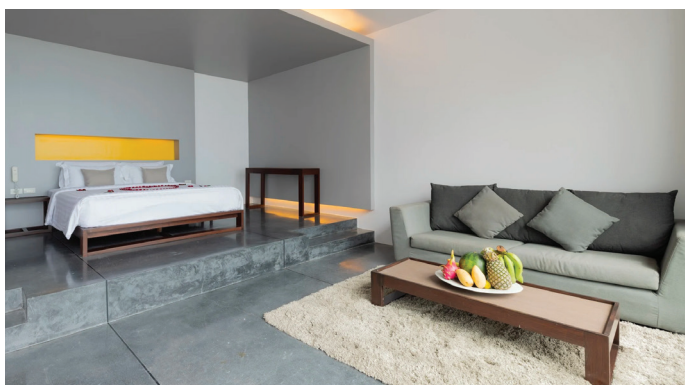


The suite provides 62 m<sup>2</sup> of open-plan living space including a spacious Sea View sleeping area with double bed, large studio-style living space with sofa, TV lounge area and kitchenette. The suite comes with a large en-suite bathroom for two with double washbasins, shower and bathtub.

- Location** 2nd floor of a 2-storey building
- View** resorts gardens, infinity pool, sunset beach and partial sea view \*without balcony
- Size** 62m<sup>2</sup>
- Bedding** double bed
- Specials** sea view bed room, living room with sofa and kitchenette, bathtub, two washbasins and rainshower



1 X SEA VIEW VILLA WITH TERRACE



The villa provides 95 m<sup>2</sup> space with 2 bedroom and 2 bathrooms. The main living space comes as a master double bedroom boasting a large Sunset Sea View studio-style living area and poolside terrace, complete with sun-lounger set as well as a large en-suite bathroom with shower and double bathtub. The second living space has the flexibility of being provided as a twin or double bedroom and includes en-suite bathroom.

- Location** ground floor of a 2-storey hotel building
- View** infinity pool, sunset beach and sea
- Size** 95m<sup>2</sup>
- Bedding** double bed and twin bed (extra 3rd bed available upon request)
- Specials** outdoor terrace with sunbeds & umbrella, two bed rooms, sea view bed room, living room with sofa, double bathtub, rainshower





## ROOM TYPES - 72 UNITS

○ **11 SUPERIOR WITHOUT TERRACE**  
68 - 78

○ **19 SUPERIOR WITH TERRACE**  
56 - 61, 23 - 35

○ **16 DELUXE WITH TERRACE**  
11, 12, 16, 17, 20, 21, 37, 38, 41, 42, 45, 46, 49, 50, 53, 54

○ **16 DELUXE PLUS WITH TERRACE**  
10, 14, 15, 18, 19, 22, 36, 39, 40, 43, 44, 47, 48, 51, 52, 55

○ **04 DELUXE POOL VIEW**  
06 - 09

○ **04 DELUXE SEA VIEW**  
02 - 05

○ **01 SEA VIEW SUITE WITH TERRACE**  
79

○ **01 2 BEDROOM SEA VIEW VILLA**  
01