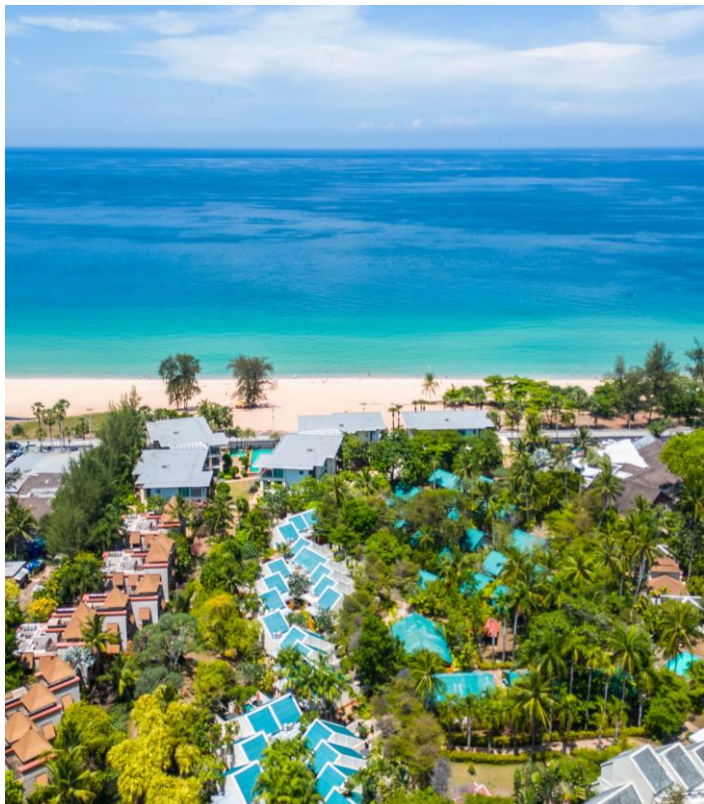


PARADOX

PHUKET



A TIMELESS TROPICAL OASIS IN THE HEART OF KARON BEACH, PHUKET, THAILAND

5-Star Beachfront Resort

A serene blend of contemporary comfort and tropical tranquility, set within 22 acres of lush gardens—just across from Phuket's world-famous Karon Beach.

Prime Location in Karon

Surrounded by restaurants, local markets, grocery stores, convenience stores, clothing shops, pharmacies, and clinics. Just a 1-minute walk to the Karon Temple Night Market and a short drive to popular attractions such as Patong Beach, Kata Beach, and Chalong Temple.

Convenient Transport

Easily accessible from Phuket International Airport, with transportation options nearby including taxis and local transfer services.

Variety of Accommodations

AA total of 352 rooms, suites, and villas—including Seaview Rooms, Garden Villas, Penthouse Villas, One-Bedroom Suites, Two-Bedroom Suites, and the exclusive Family Two-Bedroom Garden and Beachfront Residences—offering a perfect stay for every type of guest.

Versatile Event Spaces

A Grand Ballroom, 7 fully equipped meeting rooms, and expansive outdoor venues including a garden lawn and beachfront setting.

Sustainable Luxury

Proudly certified by the Tourism Authority of Thailand under the Sustainable Tourism Acceleration Rating (TAT STAR). Dedicated to eco-conscious practices and continuous landscape improvements—delivering sustainability without compromising guest experience.

ROOM TYPE





Room Type

PARADOX SUPERIOR

Size

36 sqm

Pax

2 Adults

Bedding Configuration

1 King or 2 Twin Beds



Room Type

PARADOX SEAVIEW

Size

36 sqm

Pax

2 Adults

Bedding Configuration

1 King or 2 Twin Beds



Room Type

PARADOX COURTYARD

Size

57 sqm

Pax

2 Adults

Bedding Configuration

1 King Bed



Room Type

PARADOX ONE - BEDROOM SUITE SEAVIEW

Size

72 sqm

Pax

2 Adults

Bedding Configuration

1 King Bed



Room Type

ONE - BEDROOM SUITE

Size

72 sqm

Pax

2 Adults

Bedding Configuration

1 King Bed



Room Type

TWO - BEDROOM SUITE

Size

108 sqm

Pax

4 Adults or 2 Adults and 2 Children (0 – 11)

Bedding Configuration

1 King and 2 Twin Beds



Room Type

COTTAGE VILLA

Size

40 sqm

Pax

2 Adults

Bedding Configuration

1 King Bed



Room Type

PREMIUM COTTAGE

Size

53 sqm

Pax

2 Adults

Bedding Configuration

1 King Bed



Room Type

GARDEN VILLA

Size

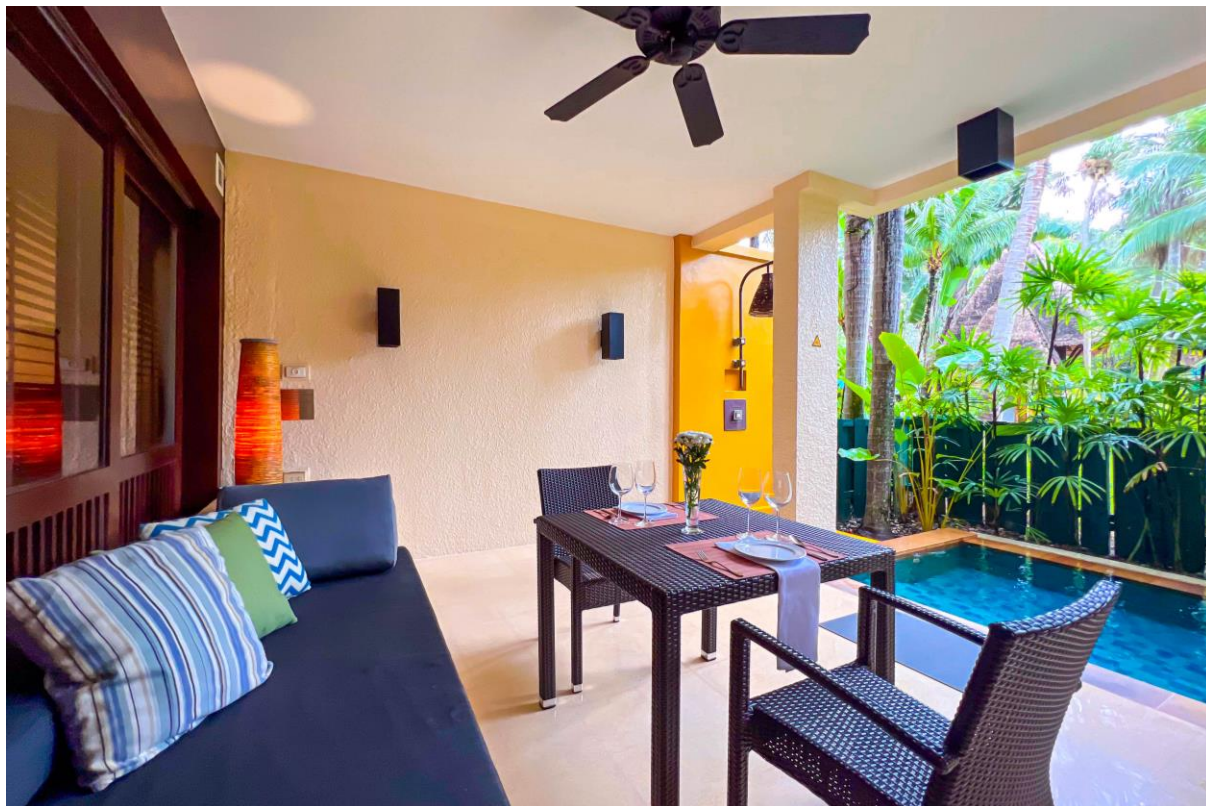
53 sqm

Pax

2 Adults

Bedding Configuration

1 King or 2 Twin Beds



Room Type

PREMIUM GARDEN VILLA

Size

68 sqm

Pax

2 Adults

Bedding Configuration

1 King Bed



Room Type

PENTHOUSE VILLA

Size

72 sqm

Pax

2 Adults

Bedding Configuration

1 King Bed



Room Type

ONE – BEDROOM SUITE VILLA

Size

72 sqm

Pax

2 Adults

Bedding Configuration

1 King Bed



Room Type

TWO – BEDROOM SUITE VILLA

Size

108 sqm

Pax

4 Adults or 2 Adults and 4 Children (0 – 11)

Bedding Configuration

1 King Bed, 2 Twin Beds, and 1 Bunk Bed



Room Type

**FAMILY
TWO – BEDROOM
GARDEN RESIDENCE**

Size

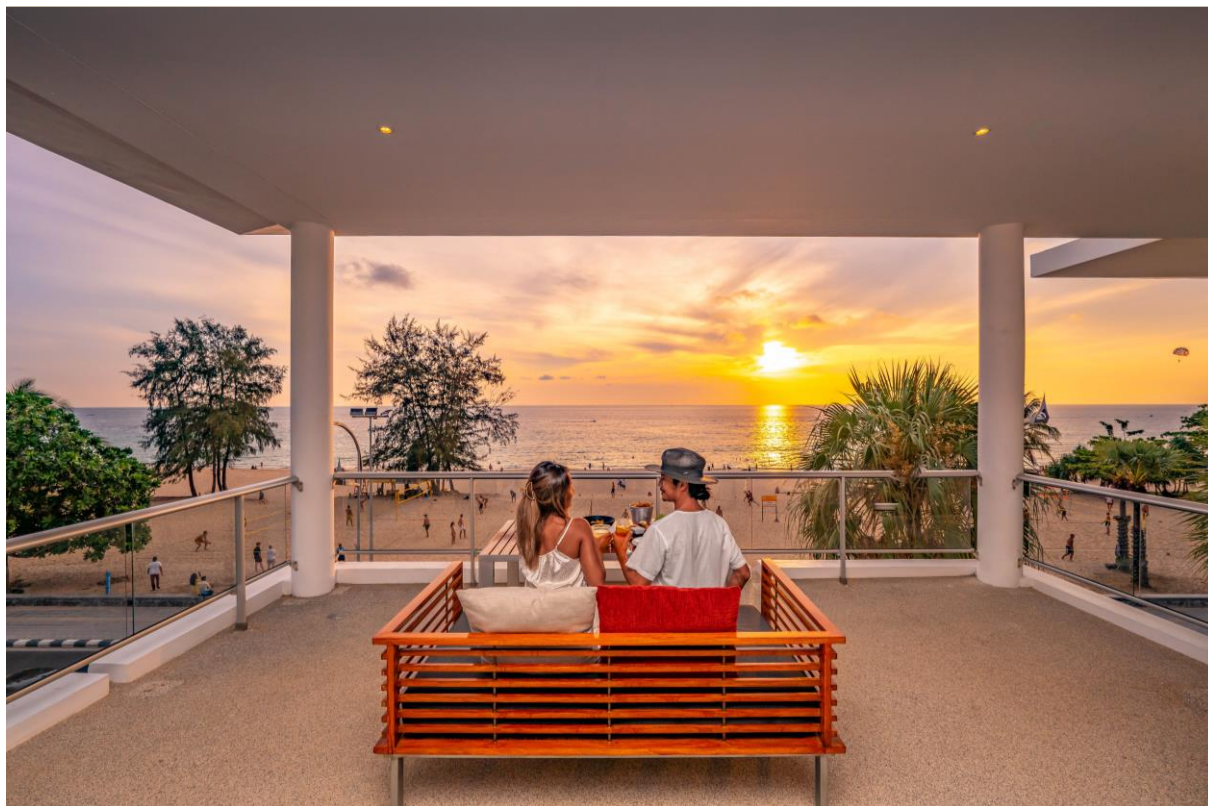
120 sqm

Pax

4 Adults or 2 Adults and 2 Children (0 – 11)

Bedding Configuration

1 King Bed and 2 Twin Beds



Room Type

**FAMILY
TWO – BEDROOM
BEACHFRONT
RESIDENCE**

Size

120 sqm

Pax

4 Adults or 2 Adults and 2 Children (0 – 11)

Bedding Configuration

1 King Bed and 2 Twin Beds



MAIN AMENITIES

- Shower Kits
- Soft Cotton Bathrobes
- Shower Cubicle
- Bathtub (depends on room type)
- Rain Shower
- Towels
- Hair Dryer
- Iron and ironing board
- Laundry Service On - site
- Umbrella
- Wardrobes
- Slippers
- Sofa Bed/ Day Bed
- Mini Refrigerator
- Drinking Water
- Kettle
- Coffee & Tea
- Coffee Machine (depends on room type)
- Flatscreen LED TVs with streaming capabilities
- Universal Plugs
- In-room Safe
- Desk
- Telephone
- Baby Crib (upon request)
- Wake-up service available
- In-Room Service
- Balcony/Terrace (depends on room type)
- Plunge Pool (depends on room type)
- Kitchenette (depends on room type)

RESORT FACILITIES



MAIN POOL & KIDS POOL

Max Depth 1.2 m. | Max Depth 0.30 m.



COCONUT GLOVE POOL

Max Depth 3 m.



SAENG CHAN POOL

Max Depth 3 m.



INFINITY POOL

Max Depth 1.2 m.



THE SPA

7 Private Villas



FITNESS CENTRE



KIDS CLUB

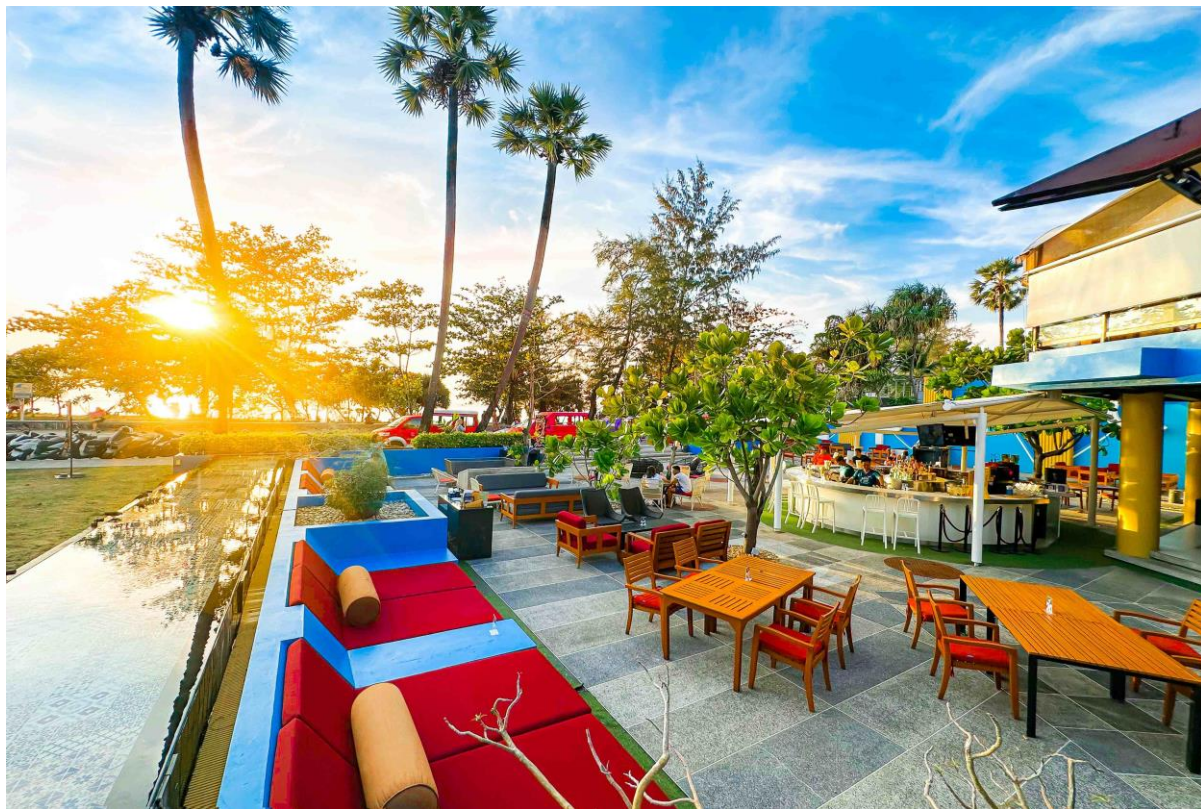


RESTAURANTS & BARS

PACIFICA RESTAURANT

Serves a wide variety of Thai, local, Indian, and international dishes in a serene setting. The menu offers rich flavors and quality selections for both breakfast and lunch. Indoor seating and poolside dining are available, surrounded by a lush tropical garden for a relaxed and elegant atmosphere.

Capacity: 168 seats.



RESTAURANTS & BARS

MINT BAR & RESTAURANT

A vibrant beach bar on Karon Beach, offering front-row sunset views and a warm, lively atmosphere by the sea. Savor exquisite international cuisine and premium beverages while enjoying live music performances with the Andaman Sea as the backdrop.

MINT Bar & Restaurant has been awarded the TripAdvisor Travelers' Choice Award for 2023 & 2024.

Capacity: The entire floor can accommodate approximately 170 seated guests, depending on the setup.



RESTAURANTS & BARS

KINNAREE BAR

Amid a stunning setting that cascades from the lobby to the main pool, whether for business, pleasure or a mix of both. This bar forms a fun backdrop for lunch, dinner, drinks, or a nightcap listening to lounge music. The outdoor four seating areas designed as birdcages, the terrace sofas, the pool view, and the tropical garden all add a little extra magic.

Capacity: The entire area can accommodate approximately 90 seated guests, depending on the setup.



RESTAURANTS & BARS

POOL BAR

The Pool Bar offers a selection of refreshing beverages, including exquisite cocktails, delicious fruit smoothies, and freshly squeezed coconut juice. Enjoy a swim in the main pool of the resort while sipping on rejuvenating drinks, surrounded by a gentle breeze in our tropical garden-style.

Fulfill every aspect of your relaxation during your special time, indulge in the exclusive service that you won't find anywhere else.

Capacity: 12 Swim-up seats and 100 Sun Loungers around the pool deck.



RESTAURANTS & BARS

CAFÉ STUDIO

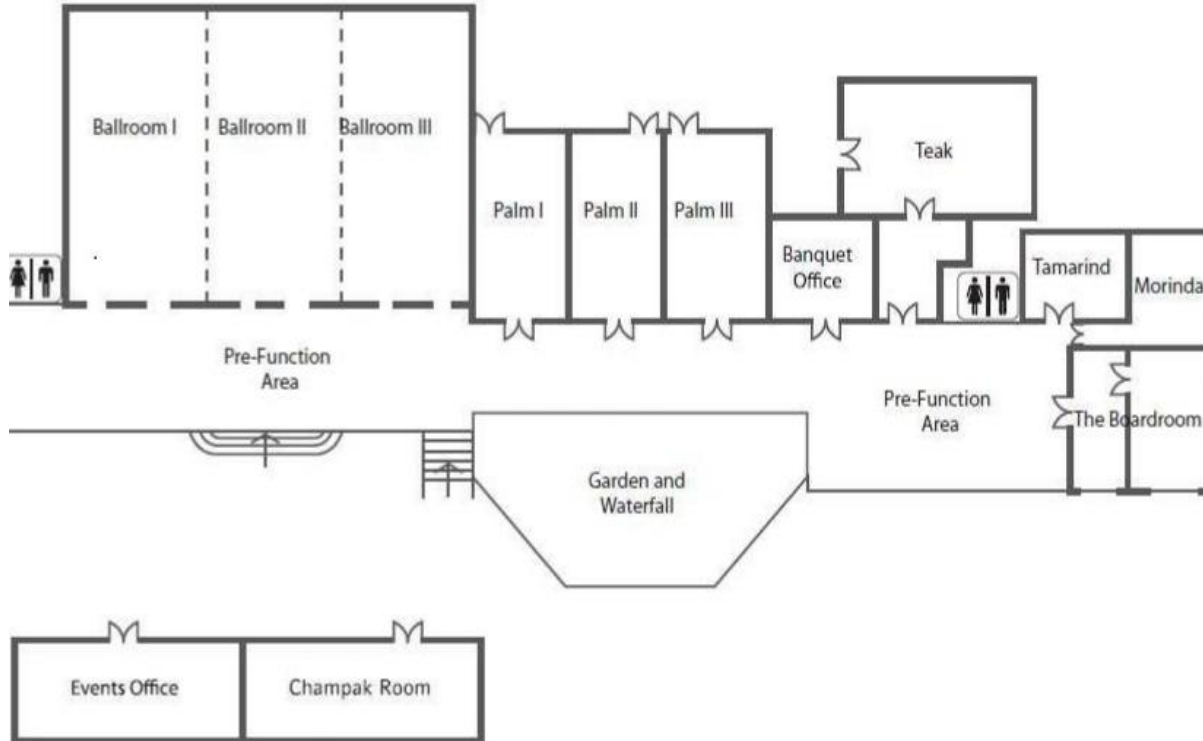
A cozy cafe near Karon Beach, Phuket, perfect for those looking for a relaxed coffee shop by the beach.

Just a short walk from the sand, it's your go-to spot for a delicious all-day breakfast, vibrant smoothie bowls, homemade cakes, birthday cakes, pastries, ice cream, and refreshing drinks.

The interior features a white and brown beach-inspired design that radiates cozy, coastal vibes—ideal for a casual meet-up, coffee break, or a quiet morning treat.

Whether you're a digital nomad, a beach walker, or a brunch lover, Café Studio is your must-visit coffee shop near the beach in Phuket.

MEETINGS & EVENTS



CONFERENCE LEVEL

- Grand Ballroom: 759 sqm.
- Ballroom I: 249.5 sqm.
- Ballroom II: 256 sqm.
- Ballroom III: 254 sqm.
- Palm room I: 120 sqm.
- Palm room II: 120 sqm.
- Palm room III: 120 sqm.
- Teak room: 145 sqm.
- Tamarind room: 30 sqm.
- Morinda room: 30 sqm.
- Boardroom: 5.4 sqm.
- Champak room: 32.5 sqm.



GRAND BALLROOM

With 759 sqm of space for a maximum capacity of 800 guests, the resort's Grand Ballroom is the perfect venue for large social occasions, major conferences or significant exhibitions.



BALLROOMS

With a total area of 250 sqm, the pillarless ballroom can accommodate up to 250 guests per ballroom. It can also be divided into three soundproof sections, ideal for smaller events or breakout sessions.



PALM ROOMS

With 120 sqm of space, Palm Rooms are ideal for medium - sized meetings and events. The room features a functional layout and a ceiling height of 3.45 meters, providing a comfortable setting for various setups such as theatre, classroom, or U - shape arrangements.



BOARDROOM

Compact at 5.4 sqm, the Boardroom is designed for intimate meetings of up to 20 guests.

Ideal for executive discussions or small group sessions, it offers a focused and private environment.

FUNCTION ROOM CAPACITY CHART

	Area (sq)	Length	Width	Height	Cocktail	Set	Buffet	Theatre	Classroom	U-Shape	Boardroom
Grand Ballroom	759	35	21.5	6	800	450	450	800	350	250	-
Ballroom I	249.5	11.6	21.5	6	250	150	150	250	120	80	-
Ballroom II	256	11.9	21.5	6	250	150	150	250	120	80	-
Ballroom III	254	11.8	21.5	6	250	150	150	250	120	80	-
Palm I	120	8	15	3.45	120	60	50	100	45	35	-
Palm II	120	8	15	3.45	120	60	50	100	45	35	-
Palm III	120	8	15	3.45	120	60	50	100	45	35	-
Teak	145	10	14.5	3.2	120	60	50	100	45	35	-
Tamarind	30	5	6	3.45	-	-	-	20	-	12	-
Marinda	30	5	6	3.45	-	-	-	20	-	15	-
Boardroom	54	5.4	10	3.45	-	-	-	-	-	-	20

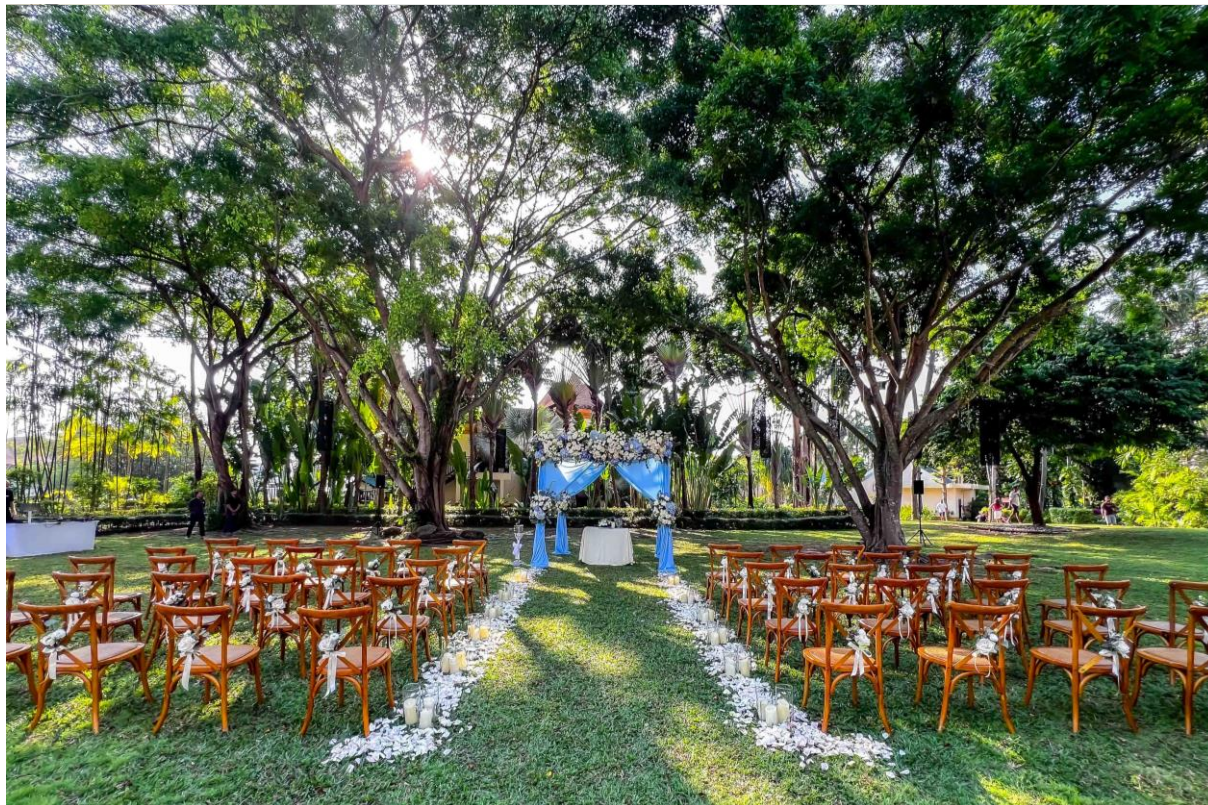


KARON BEACH SQUARE

(KBS)

A diverse range of events such as weddings, private dinners, birthday parties, after-parties, bachelor or hen nights, charity events, meetings, boardgame competitions, cocktail parties, wine tastings, game nights, staff parties, mini concerts, banquets, networking events, art exhibitions, workshops, and more, can be organized here and can be tailored to suit with any specific requirements, with both outdoor (with the roof) and indoor areas available.

Capacity: The entire floor can accommodate approximately 200 + guests, depending on the setup, or up to 450 guests for a standing cocktail event.



GARDEN LAWN

The Garden Lawn is indeed a beautiful and versatile venue for events! Surrounded by lush greenery, it offers a stunning natural setting that's perfect for special occasions such as weddings or stylish outdoor dinners.

With a capacity of up to 150-200 guests, it's well-suited for larger gatherings. The open-air space allows for creative customization, ensuring each event can be tailored to the unique theme and style of the celebration.

Whether it's a romantic wedding, a chic dinner, or even a dynamic Team Building activity, the venue promises to create a truly memorable experience amidst nature's beauty.

PARADOX

PHUKET

Aom Patmanee
Director of Sales

aom.patmanee@paradoxresortphuket.com