



Say
Hello!
to

HILTON DUBAI PALM JUMEIRAH



TAP TO VIEW
HOTEL VIDEO



Hilton
DUBAI PALM JUMEIRAH

WHY Dubai?

FAMILY FRIENDLY



With an amazing array of choices from aquariums, water parks and theme parks. Children will receive a warm welcome across the city.

SHOPPING EXPERIENCE



From modern malls to traditional souks, the city affords a multitude of shopping experiences

CITY AND NATURE



From desert dunes to dancing fountains, sky diving or the exploring the world's deepest diving pool, Dubai offers the best of both worlds between city and nature.

BEST DINING SCENE



Dubai's myriad of restaurants and luxurious dining temples provide a backdrop to one of the world's most exciting and dynamic F&B scenes..





OUR Home

PALM WEST BEACH

Get your heart racing with the many activities available on site, take your furry friend on a walk or experience a range of restaurants.

All available at the freshest place to be in Dubai.



LOCAL ATTRACTIONS

- The largest observation wheel in the world: Ain Dubai
- Palm Jumeirah, home of dining spots, and world-leading water parks
- Burj Khalifa, the world's tallest building, and Dubai Mall, the world's largest shopping, entertainment, and leisure destination
- Mall of the Emirates and Ski Dubai
- Desert safari, camel rides, quad bike tours, and sand surfing
- Jumeirah Beach Residence, a vibrant beach promenade with shops, restaurants, and cafés

LOCATION

information



Easy access: located at the entrance of Palm Jumeirah



The newest and best private beach in Dubai



Sunset views of the Marina skyline and Ain Dubai



Family centric location



Lively destination with restaurants and shops within walking distance



Pet-friendly promenade



A 1.6 km promenade and beachfront



TRANSPORTATION PROXIMITY

Dubai International Airport	32 km / 35 mins
Nakheel Mall	3 km / 4 mins
Burj Khalifa, Dubai Mall	11 km / 19 mins
Mall of the Emirates	8 km / 9 mins
Jumeirah Beach Residence	7 km / 15 mins

[VIEW DUBAI MAP](#)

[VIEW HOTEL MAP](#)

TOP highlights

LOCATION

- Prime location on Palm West Beach with convenient access to Dubai's key attractions.
- Close proximity to water parks, Ain Dubai, Burj Khalifa, Dubai Mall, and Mall of the Emirates.
- Ideally positioned for exploring Palm Jumeirah and Dubai's renowned landmarks.
- Features a 1.5 km lively beachfront promenade.

VIEWS

- Spectacular Marina skyline views with breathtaking sunsets.
- Guests can take in these views from their rooms, restaurants, the beach, or the Executive Lounge.
- Provides a tranquil setting for relaxation and productive meetings.

BEACH

- Dubai's newest beachfront destination, featuring 450 sunbeds.
- Offers a diverse range of water sports and leisure activities for guests of all ages.
- The beach offers stunning views of the Marina skyline, with a relaxed atmosphere perfect for sunbathing or beach strolls.

FOOD & BEVERAGE

- Indulge in an exceptional culinary journey across 10 signature dining
- Start with breakfast at Jones the Grocer, enjoy afternoon tea at SocialBee.
- Spend your evening at Trader Vic's with Latin flair. For more, savor BBQ at Claw BBQ, enjoy rooftop views at Barfly by Buddha-Bar, or experience pub vibes and live entertainment at McGettigan's.

EVENTS

- Elegant meeting and event venues with panoramic views of the Dubai Marina skyline and Ain Dubai.
- State-of-the-art audio-visual technology to elevate business meetings and conferences.
- Ideal setting for gala dinners, product launches, and corporate gatherings in the Grand Ballroom or beachfront spaces.

WELCOME to our lobby

Step into a spacious and elegantly designed lobby, where a signature aroma welcomes you the moment you arrive.

Adorned with refreshing floral arrangements, it's the perfect space to relax and unwind.

Enjoy a cup of freshly brewed Arabic coffee as you take in the inviting ambiance.





THE
views



GUEST experience

GUEST RELATIONS & CONCIERGE

Our dedicated team is available to assist with bookings, provide recommendations, and offer local insights.

MULTILINGUAL TEAM

We proudly offer services in multiple languages, catering to the diverse needs of our international guests.

RESTAURANT RESERVATIONS DESK

Secure reservations at any of our 10 signature dining venues.

WATER SPORTS

Take advantage of a variety of water sport activities.

HILTON HONORS

As a Hilton Honors member, you can earn points towards complimentary nights, room upgrades, and a range of exclusive rewards. Benefit from special offers and personalized services, ensuring a more rewarding stay at Hilton Dubai Palm Jumeirah.

DINING OPTIONS

Select from our Half Board or Full Board packages across all dining outlets for a convenient and enjoyable meal experience.

EXECUTIVE LOUNGE

Exclusive access for Executive Room and Suite guests, offering light refreshments and personalized services. Children are welcome, except Happy Hour times.

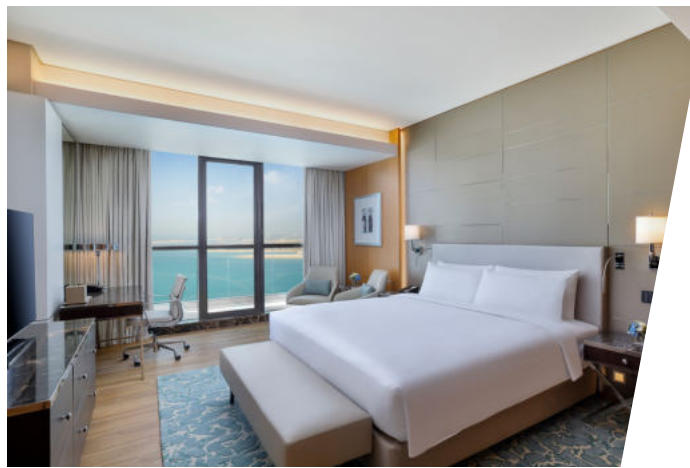
OUR Accommodations



- TOTAL ROOMS: 605
- NUMBER OF SUITES: 54
- ROOM SIZES RANGE: 40 SQM TO 60 SQM
- SUITE SIZES RANGE: 80 SQM TO 390 SQM
- ACCESSIBLE ROOMS: 7
- KING ROOMS (MAX OCCUPANCY): 3 ADULTS OR 2 ADULTS AND 1 CHILD
- TWIN ROOMS (MAX OCCUPANCY): 3 ADULTS OR 2 ADULTS AND 2 CHILDREN
- BALCONIES IN **EVERY ROOM** FOR SUNSET SEA AND DUBAI MARINA SKYLINE VIEWS
- MORE THAN **80% CONNECTING ROOMS**
- ROYAL & IMPERIAL SUITES HAVE A **LARGE TERRACE, 2 BEDROOMS, 2 BATHROOMS, AN IN-ROOM SAUNA AND SEVERAL BALCONIES**
- SEPARATE BATHTUB AND SHOWER **IN EVERY ROOM**
- **LAVAZZA COFFEE MACHINE** IN EVERY ROOM



**GUEST
ROOMS**



EXECUTIVE ROOMS



SUITES



EXECUTIVE lounge

Located on 13th floor offers indoor and outdoor seating with stunning sea and Dubai Marina views.

Available to all guests booking Executive Rooms and Suites.

EXCLUSIVE BENEFITS:

- Complimentary Breakfast
- Afternoon Tea
- Happy Hour (For adults only)
- Refreshments
- Private Check-in and Check-out



EXPERIENCE *serenity*



- eforea Spa offers 8 treatment rooms, a Moroccan Hammam, sauna, and a couple's room with a private Jacuzzi. Enjoy rejuvenating facials and massage therapies.
- Stay fit in our 24-hour gym, equipped with Technogym cardio and strength equipment, and enjoy stunning views of Dubai Marina.



A PERFECT HOLIDAY *destination*



KEY LEISURE AMENITIES AT THE HOTEL

Whether you want to bask in the sun, achieve serenity at the spa or just excite your taste buds, Hilton Dubai Palm Jumeirah has something for you.



Sunset facing private beach, with sunbeds cabanas and a beach bar



eforea Spa with Turkish Hamman



Pool facing the sea with sunset views and a swim-up pool bar



Kid's Club with a shaded kid's pool



10 stunning restaurants

FAMILY Fun



Open daily from 10am
to 8pm, for children
aged 4 to 12

- Fully equipped indoor & outdoor playgrounds with daily activities to keep the young ones entertained.
- Our experienced kid's club team members provide caring & personalized services including baby-sitting.
- Keep the kids cool under our a shaded pool or build sandcastles on our private beach.
- Kids menus available at all our restaurants

DINING options

Start your day with breakfast at Jones the Grocer, followed by island inspired lunch at Tahitian Village.

Enjoy our signature Beehive themed afternoon tea at SocialBee, then catch the sunset at Zing Beach & Pool Bar.

Don't miss our Imagination Family Brunch at Mowsem.



EXPLORE OUR
RESTAURANTS



DINING options

For dinner, savor Polynesian-inspired dishes at Trader Vic's, dive into classic American BBQ at CLAW BBQ, or sip handcrafted cocktails and enjoy exquisite Asian-inspired dishes at Barfly by Buddha-Bar, all with rooftop views and live entertainment.

For a lively pub atmosphere, head to McGettigan's Factory for hearty fare, big screen games, and a live band.



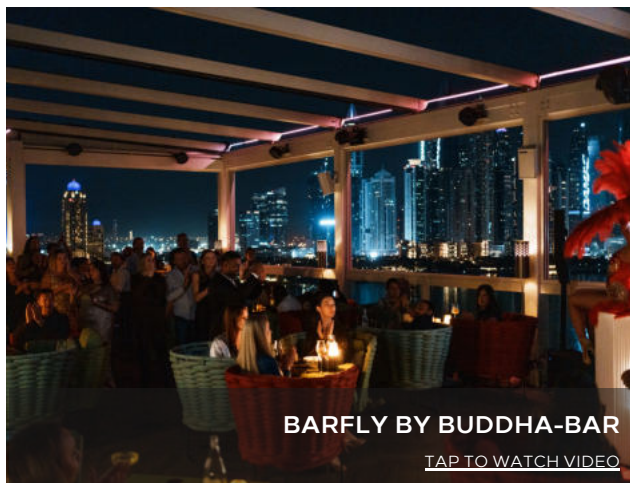
TRADER VIC'S

[TAP TO WATCH VIDEO](#)



CLAW BBQ

[TAP TO WATCH VIDEO](#)



BARFLY BY BUDDHA-BAR

[TAP TO WATCH VIDEO](#)



McGETTIGAN'S FACTORY

[TAP TO WATCH VIDEO](#)



MAKING moments

Celebrate life's most cherished moments with us, from the festive season to Ramadan, Valentine's, birthdays, anniversaries, weddings, and baby showers. Whether it is an intimate dinner, a joyful family gathering, or a grand event, our stunning venues, exquisite menus, and personalized service create the perfect setting.

Let us turn your special occasion into an unforgettable experience - because every moment deserves to be celebrated in style.

Your destination to celebrate, anytime of the year.

CONFERENCE & EVENTS

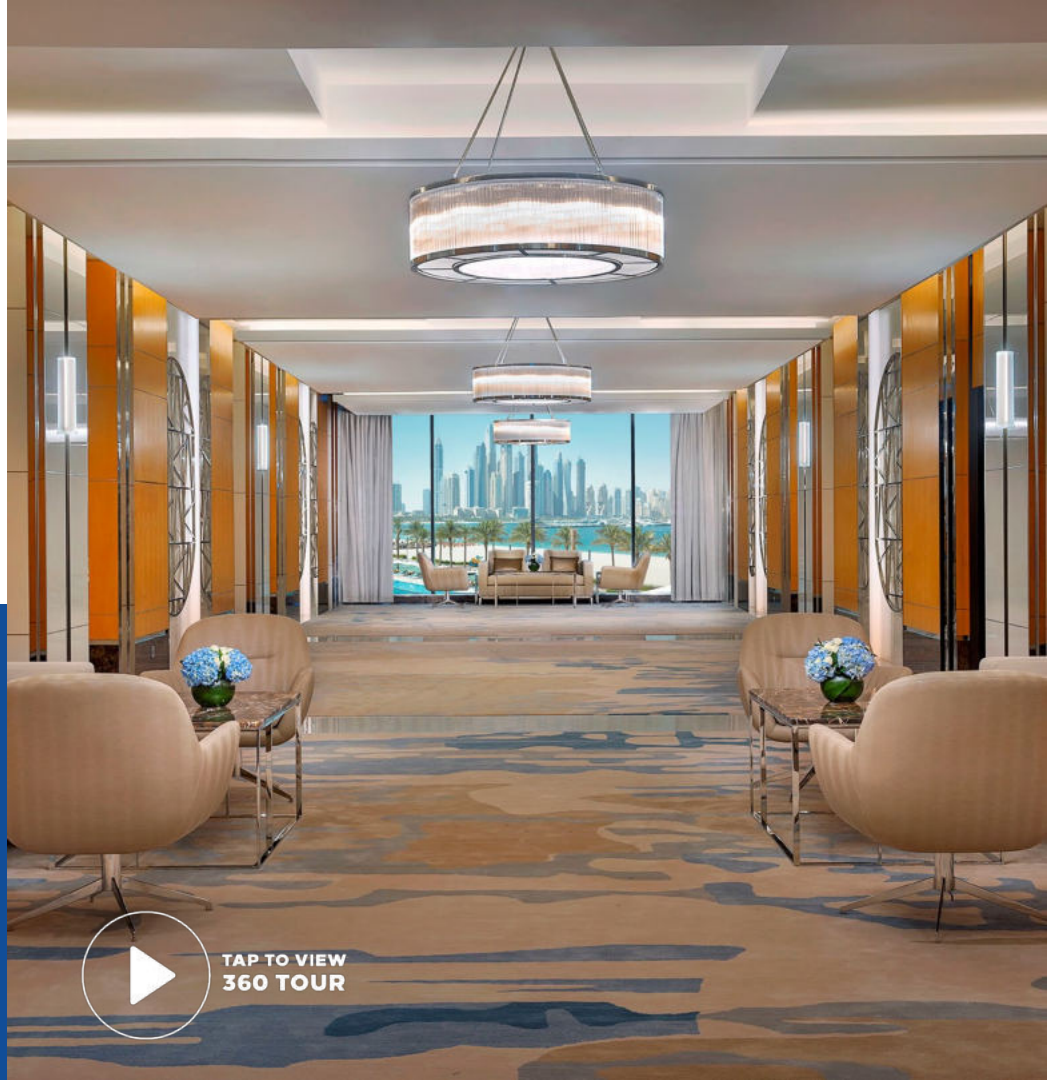
facilities

Hilton Dubai Palm Jumeirah conference facilities are unparalleled for both function and style, catering to international business people from small meetings to sizable events.

Enjoy a custom designed agenda, an array of services and facilities, and uncompromising attention to detail.

YOUR ADVANTAGES

- Hilton Honors Bonus Program for meeting organizers
- HiltonLink, your custom webpage to manage your accommodation needs
- Professional MICE team on site
- Business center and services



TAP TO VIEW
360 TOUR



At a glance

- Daylight in all function rooms
- Outdoor event venues up to 800 people
- Large bars & restaurants capacity accessible for groups & events
- Royal Suites with large terrace for exclusive events
- Seaview event spaces for wedding, receptions and cocktail parties

Meeting room details

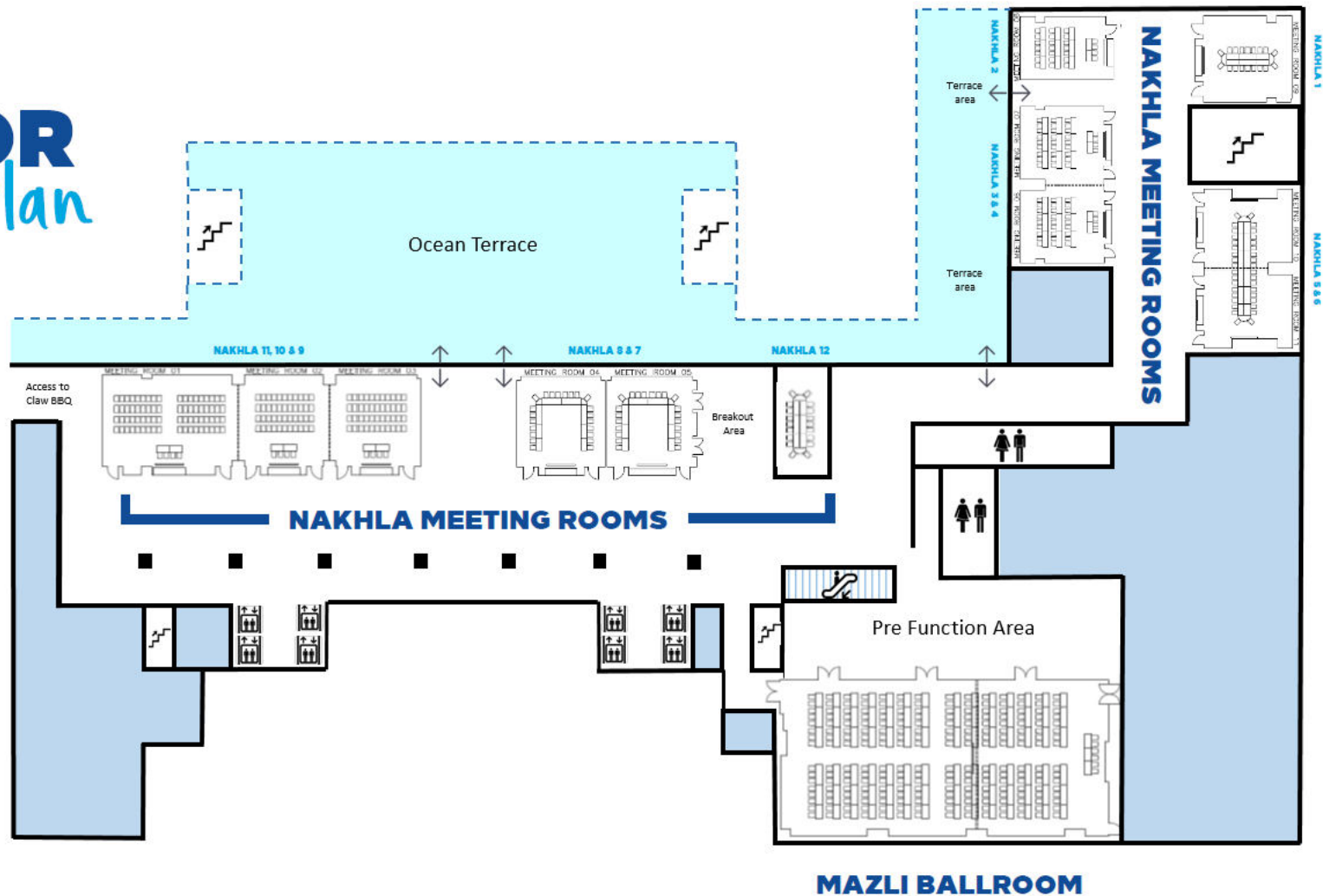
Total sq meters space	2,274 m ²
Largest ballroom space	423 m ²
Total meeting rooms	12
Largest group meeting capacity	440 people
Outdoor event venues	Up to 800 people

CAPACITY

chart

Name	Area (Mt. Sq.)	Theater	Banquet	Cabaret	Cocktail	Classroom	Boardroom	Ushape
Mazli (with Stage)	423	256	280	196	300	132	48	62
Mazli (without Stage)	423	-	310	-				
Foyer Mazli	185	-	-	-	200	-	-	-
Mazli 1	252	96	90	63	96	40	19	24
Mazli 2	170	128	140	98	150	48	25	32
Nakhla 1	79	-	-	-	-	-	18	-
Nakhla 2	60	36	30	21	40	16	16	17
Nakhla 3	76	50	30	28	54	18	16	18
Nakhla 3 & 4	152	106	90	63	110	38	24	26
Nakhla 4	76	50	30	28	54	18	16	18
Nakhla 5	74	36	30	21	48	18	16	18
Nakhla 6	74	36	30	21	48	18	16	18
Nakhla 5 & 6	148	98	90	63	110	38	24	26
Nakhla 7	70	32	30	28	48	18	16	16
Nakhla 8	70	32	30	28	48	18	16	16
Nakhla 9	70	40	30	28	48	18	16	16
Nakhla 10	70	40	30	28	48	18	16	16
Nakhla 11	75	56	60	42	72	33	24	22
Nakhla 9 & 10	140	80	70	56	108	36	-	22
Nakhla 10 & 11	175	88	110	70	126	51	-	39
Nakhla 9, 10 & 11	245	112	140	98	180	69	-	36
Nakhla 12	32.7	-	-	-	-	-	7	-
Ocean Terrace 1 with Stage	1,028	500	320	224	550	-	-	-
Ocean Terrace 1 without Stage		-	400					
Ocean Terrace 2 with Buffet Space		120	90	63	120	-	-	-
Ocean Terrace 2 without Buffet Space		160	140	77	160			
Ocean Terrace 1 & 2	1028	-	410	-	670	-	-	-
McGettigan's Garden		-	300	-	360	-	-	-

FLOOR Plan





Nakhla Meeting Room



Mazli Ballroom

MEET OUR team

LEISURE INQUIRIES



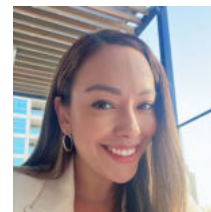
TATIANA MILKINA
DIRECTOR OF SALES



SARAH AZIZ
DIRECTOR OF GROUPS,
CONFERENCE & EVENTS



CORPORATE INQUIRIES



VANESSA PENADO
ASSISTANT DIRECTOR
OF CORPORATE SALES





Hilton

DUBAI PALM JUMEIRAH