



JUMEIRAH AL NASEEM
JUMEIRAH MINA A'SALAM
JUMEIRAH AL QASR
JUMEIRAH DAR AL MASYAF



JUMEIRAH AL NASEEM A COOL AND CONTEMPORARY BEACHSIDE RETREAT

Jumeirah Al Naseem invites the outdoors in. Lush gardens edge the sandy beach, providing pockets of privacy and peacefulness. The 435 rooms and suites are open and spacious, accented with Arabian touches delivering a strong sense of place. From the balconies and extended terraces, there are spectacular views of the sea, the resort's landscaped gardens, swimming pools and Burj Al Arab Jumeirah.



The Penthouse Pool

ACCOMMODATION

Category	Size (sq.m)	No
Resort Deluxe Room	51	129
Family Superior Room	60	88
Ocean Deluxe Room	51	108
Pool Terrace Room	51 - 60	20
Ocean Club Superior Room	60	35
Ocean Club Terrace Room	51	9
Two Bedroom Deluxe Family Room	102	10
Gulf Ocean Suite	126	4
Ocean Terrace Suite	135	20
Family Suite	126	8
Ocean Suite	135	10
Presidential Ocean View Suite	300	2
Royal Suite	500	1
Royal Penthouse	690	1



Ocean Terrace Suite



Gulf Ocean Terrace Suite



JUMEIRAH MINA A'SALAM A BOUTIQUE RETREAT JUST STEPS FROM THE BEACH

Jumeirah Mina A'Salam is the heart of our sprawling resort. The spacious 292 guest rooms and suites are beautifully furnished, with private balconies overlooking the ocean, offering authentic Arabian experiences with family-friendly service.

Meaning 'Harbour of Peace', the hotel forms the gateway to a collection of restaurants, bars and shops. It is the entry point from which numerous waterways and walkways thread their way to all corners of the resort.



Royal Suite



Arabian Deluxe

ACCOMMODATION

Category	Size (sq.m)	No
Arabian Deluxe Room	50	110
Ocean Deluxe Room	50	170
Ocean Suite	115	4
Two Bedroom Deluxe Family Room	100	15
Ocean Premier Suite	122	6
Royal Suite	268	2



Ocean Premier Suite



JUMEIRAH AL QASR PALATIAL LUXURY INSPIRED BY 1,001 ARABIAN NIGHTS

Designed in the style of a Sheikh's summer residence, a majestic arrival experience welcomes you to Jumeirah Al Qasr.

Experience a truly royal stay with recently refurbished rooms and suites decorated in traditional Arabian style with stunning views to the ocean and the opulent surroundings of the majestic resort.



Royal Suite

ACCOMMODATION

Category	Size (sq.m)	No
Arabian Deluxe Room	55	201
Ocean Deluxe Room	55	59
Junior Arabian Suite	80	14
Junior Ocean Suite	85	3
One Bedroom Arabian Suite	105	7
One Bedroom Ocean Suite	105	5
Presidential Suite	180	2
Three Bedroom Royal Suite	660	1



Junior Arabian Suite



Presidential Suite



JUMEIRAH DAR AL MASYAF EXQUISITE ARABIAN-INSPIRED SUMMERHOUSES

Set amongst tranquil gardens, waterways, exclusive pools Jumeirah's two-kilometre private beach, the intimate and exquisite summerhouses of Jumeirah Dar Al Masyaf offers 29 spacious guest rooms and courtyards, 24-hour butler service with understated Arabian luxury.



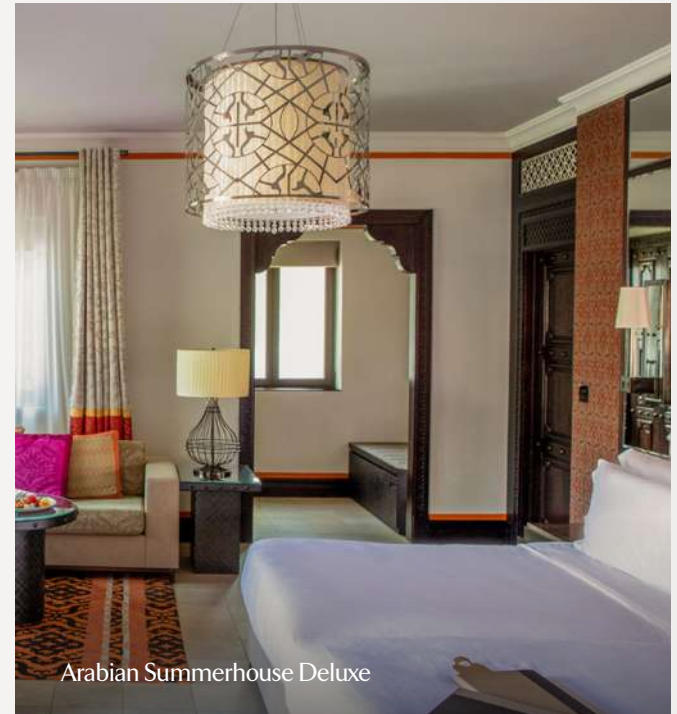
Majilis



Gulf Summerhouse Arabian Suite

ACCOMMODATION

Category	Size (sq.m)	No
Arabian Summerhouse Deluxe	60	90
Arabian Summerhouse Lagoon Deluxe	60	54
Gulf Summerhouse Arabian Deluxe	60	62
Gulf Summerhouse Ocean Deluxe	60	48
Arabian Summerhouse Arabian Suite	120	18
Two Bedroom Gulf Family Room	120	10
Gulf Summerhouse Arabian Suite	120	3
Gulf Summerhouse Ocean Suite	120	8



Arabian Summerhouse Deluxe

HIDDEN GEMS OF JUMEIRAH DAR AL MASYAF



Royal Malakiya Villa

Hidden within the resort's captivating waterways and architectural marvels is its most luxurious accommodation – the Jumeirah Malakiya Villas. Each villa is a duplex, complete with its own butler and in-suite check-in, furnished kitchen, plunge pool, abra station and private entrance with direct access to Souk Madinat Jumeirah.



Malakiya Three Bedroom Villa Private Pool

ACCOMMODATION

Category	Size (sq.m)	No
Malakiya Two Bedroom Villa	275	2
Malakiya Three Bedroom Villa	370 - 531	4
Royal Malakiya Villa	644	1



Malakiya Two Bedroom Villa



Pai Thai

RESTAURANTS AND BARS

JUMEIRAH AL NASEEM

ROCKFISH | Delight in Mediterranean dining like never before in this beach front restaurant with a menu matched by stunning vistas of Burj Al Arab Jumeirah.

SUMMERSALT | Discover the luxurious beach club with the most mesmerising views of the iconic Burj Al Arab Jumeirah. Savour delectable fusion cuisine, expert mixology and a live DJ by the stunning lounge pool.

THE PALMERY | Gaze upon the beautiful views from the open terraces as you enjoy a global menu that celebrates Arabian influence on world cuisine.

AL MANDHAR LOUNGE | Be it a sophisticated afternoon tea, eclectic international bites or sumptuous array of pastries, this ambient lounge has it all.

KAYTO | A stunning rooftop dining spot offering Peruvian Nikkei, signature cocktails and shisha in a vibrant and captivating setting.

SUGARMASH | A hub of Polynesian cuisine, this vibrant pool eatery serves everything from exotic cocktails to delicious ceviches.

KALSA POOL BAR | The ideal place for tempting flatbreads, Sicilian pizzas and a host of trendy healthy bites.

JUMEIRAH MINA ASALAM

ZHENG HE'S | Embark on a culinary journey through the Orient with Chinese dishes reimagined and transformed with modern flair.

TORTUGA | Located by the waterways, Tortuga welcomes you to the world of authentic Mexican cuisine filled with colours, warmth and flavours.

SHIMMERS | Offering guests and local residents authentic Greek food and a casual chic atmosphere set on the beautiful shores of Jumeirah Mina A'Salam.



KAYTO



Pierchic



Arboretum



Shimmers

AL SAMAR LOUNGE | Enjoy a traditional afternoon tea and a range of soft cocktails and shisha at this lobby lounge.

BAHRI | Overlooking the beautiful waterways of the resort, Bahri is the place to be for live music, delicious bar bites and classic cocktails.

HANAAYA | Meaning happiness in Arabic, Hanaaya is a bright and elegant restaurant that offers food lovers a culinary world journey.

TRATTORIA | Located in the heart of Souk Madinat Jumeirah, this restaurant serves traditional Italian cuisine cooked with typical Italian flavours.

THE NOODLE HOUSE | Explore the flavours of Asia within a vibrant and bustling dining space. Be transported to the street food markets of South East Asia and enjoy the best dishes from the region at great value prices.

THE FARM HOUSE | Farm-to-table live fire cuisine by the legendary pitmaster Hattem Mattar on a rooftop overlooking Souk Madinat Jumeirah.

MINA A'SALAM POOL BAR | Offering a wide array of delicious food and cocktails throughout the day, this is the perfect place to enjoy a drink as you gaze upon spectacular views of the Arabian Gulf.

JUMEIRAH AL QASR

THE HIDE | An elegant deco-style steakhouse and grill restaurant and bar.

PIERCHIC | Enjoy the finest Italian dishes, with an 'over-the-water' dining experience.

PAI THAI | A lavish terrace overlooking the serene waterways where traditional Thai flavours culminate in a quintessential experience.

FRENCH RIVIERA | From St-Tropez to Monte-Carlo, be transported to the culinary glamour of the South of France.

ARBORETUM | Known for serving the finest of Arabian and international cuisine, this restaurant is the ambassador of Arabian dining culture in Dubai.

AL NAFOORAH | Authentic Lebanese culinary experience with generous hospitality in an exquisite palatial setting.

LA PLAGE BY FRENCH RIVIERA | Exquisite beachside dining oozing Côte d'Azurian galmour by acclaimed Chef Kim Joinie-Maurin.

BAR BUCI | An elegant cocktail bar with a vintage vibe and stunning views of the ocean.

AL FAYROOZ LOUNGE | With views of the winding waterways and the majestic Burj Al Arab Jumeirah, this is an ideal place to stop by for a refreshing snack or afternoon tea.

SCOOPS | Located by Jumeirah Al Qasr's main pool, this outdoor ice-cream parlour offers fresh homemade ice creams, sorbets, cookies and sundaes.



Summersalt



Talise Spa



KiDS Club

MEETINGS AND EVENTS

The resort boasts the region's leading conference banqueting and events facilities. Few venues compare with the technical and logistical scope, quality and capabilities offered by the resort.

Surrounded by picturesque waterways and traditional Arabic architecture, each venue provides an abundance of services and amenities for your utmost convenience. From private meeting rooms and intimate restaurant locations to large ballrooms and the 4500-seater Madinat Arena, the conference and banqueting options excel in scale, flexibility and quality, setting the stage for incomparable events.

VENUES

Indoor Venues:

- ❖ Madinat Arena
- ❖ Joharah Ballroom
- ❖ Murjaan Ballroom
- ❖ Conference Centre Meeting Rooms
- ❖ Majlis Al Salam
- ❖ Majlis Al Mina
- ❖ Al Badir Boardrooms

Outdoor Venues:

- ❖ Fort Island

WELLNESS AND LEISURE

- ❖ A 2-km private beach with uninterrupted views of the sea and Burj Al Arab Jumeirah
- ❖ Winding waterways with traditional abras for an enchanting tour of the resort
- ❖ The award-winning Talise Spa with 26 indoor and outdoor treatment rooms at Jumeirah Al Qasr and Spa Suites at Jumeirah Al Naseem
- ❖ Children have an unlimited access to Sinbad's Kids Club and KiDS at Jumeirah Al Naseem, offering daily entertainment and scheduled activities
- ❖ Complimentary and unlimited access to Wild Wadi Waterpark™ with 30 thrilling rides
- ❖ Traditional souk with over 75 specially selected boutiques and shops
- ❖ Indoor and outdoor swimming pools and watersports activities
- ❖ State-of-the-art fitness facilities at J Club with a rock climbing wall, tennis courts, and the region's first high altitude suite
- ❖ One-of-a-kind Turtle Rehabilitation Lagoon located at Jumeirah Al Naseem with a daily feeding schedule for the rescued sea turtles and release back into their natural habitat



Jumeirah Al Qasr Beach





JUMEIRAH RESERVATIONS

JUMEIRAH HOTELS & RESORTS

Book online: jumeirah.com
 Tel: +971 4 364 7555
 Email: reservations@jumeirah.com
 GDS helpdesk: helpdesk@jumeirah.com

Jumeirah Living Serviced Residences

Book online: jumeirahliving.com
 Tel: +971 4 364 7676
 Fax: +971 4 364 7677
 Email: reservations@jumeirahliving.com
sales@jumeirahliving.com

Toll free:

From Americas:

Argentina 0800 6662 105
 Brazil 0800 8919 650
 Canada 1 888 387 8357
 Mexico 01 800 925 0323
 USA 1 877 854 8051

From Asia Pacific:

Australia 1 800 269 388
 China 400 8866 087
 Hong Kong, China 800 933 730
 India 000 800 440 2144
 Japan 012 0081 700
 Malaysia 1 800 812 577
 New Zealand 0800 450 383
 Pakistan 00800 9097 1011
 South Korea 080 525 0880
 Singapore 800 1011 759

From Europe:

Austria 0800 295 292
 Belgium 0800 74147
 Cyprus 800 92532
 Czech Republic 800 701 483
 Denmark 8088 7209
 France 0800 910379
 Germany 0800 1828 000
 Hungary 068 098 7430
 Ireland 1800 760 183
 Italy 800 870 121
 Luxembourg 800 25385
 Netherlands 800 0223 546
 Norway 800 10272
 Portugal 800 819 354
 Russia 8800 555 0324
 Spain 900 977 050
 Sweden 020 795 541

Switzerland 0800 561 196
 United Kingdom 0800 0828 000

From Middle East & Africa:

UAE 800 JUMEIRAH
 800 5863 4724
 Bahrain 800 00555
 Egypt 0800 0000 157
 Saudi Arabia 800 8971 439
 South Africa 0800 999 563

Direct Dial (IDD Rates apply):

Kuwait +971 4 364 7555
 Qatar +971 4 364 7555
 Other countries +971 4 364 7555

JUMEIRAH GROUP GLOBAL SALES OFFICES

MIDDLE EAST, AFRICA AND INDIA

Tel: +971 4 366 5761
 Email: mesales@jumeirah.com

EUROPE

Western Europe

Tel: +44 20 7858 7555
 Email: uksales@jumeirah.com

Central Europe

Tel: +49 69 297 237 610
 Email: germanysales@jumeirah.com

Russia & CIS

Tel: +7 495 641 18 36
 Email: moscowsales@jumeirah.com

AMERICAS

Canada, USA, Brazil

Tel: +1 917 755 1400
 Email: ruzrique.toscano@jumeirah.com

ASIA PACIFIC

China

Tel: +86 1391 767 1020
 Email: tony.ma@jumeirah.com

Australia

Tel: +61 (0) 409 616046
 Email: teree.george@jumeirah.com

CONNECT WITH US



Jumeirah



Jumeirah



Jumeirahgroup



JumeirahGroup



jumeirah-group-jumeirah-hotels-and-resorts

For more information, visit jumeirah.com

For GDS Codes, visit jumeirah.com/GDS



Jumeirah[™]
HOTELS & RESORTS

[jumeirah.com](https://www.jumeirah.com)

© Jumeirah International LLC 2022

All rights reserved. No part of this publication may be reproduced in any material form (including photocopying or storage in any medium by electronic means) without the written permission of the Jumeirah group of companies.