

MI<sup>W</sup>LEO  
THE PALM

# HOTEL PRESENTATION

Prime Location

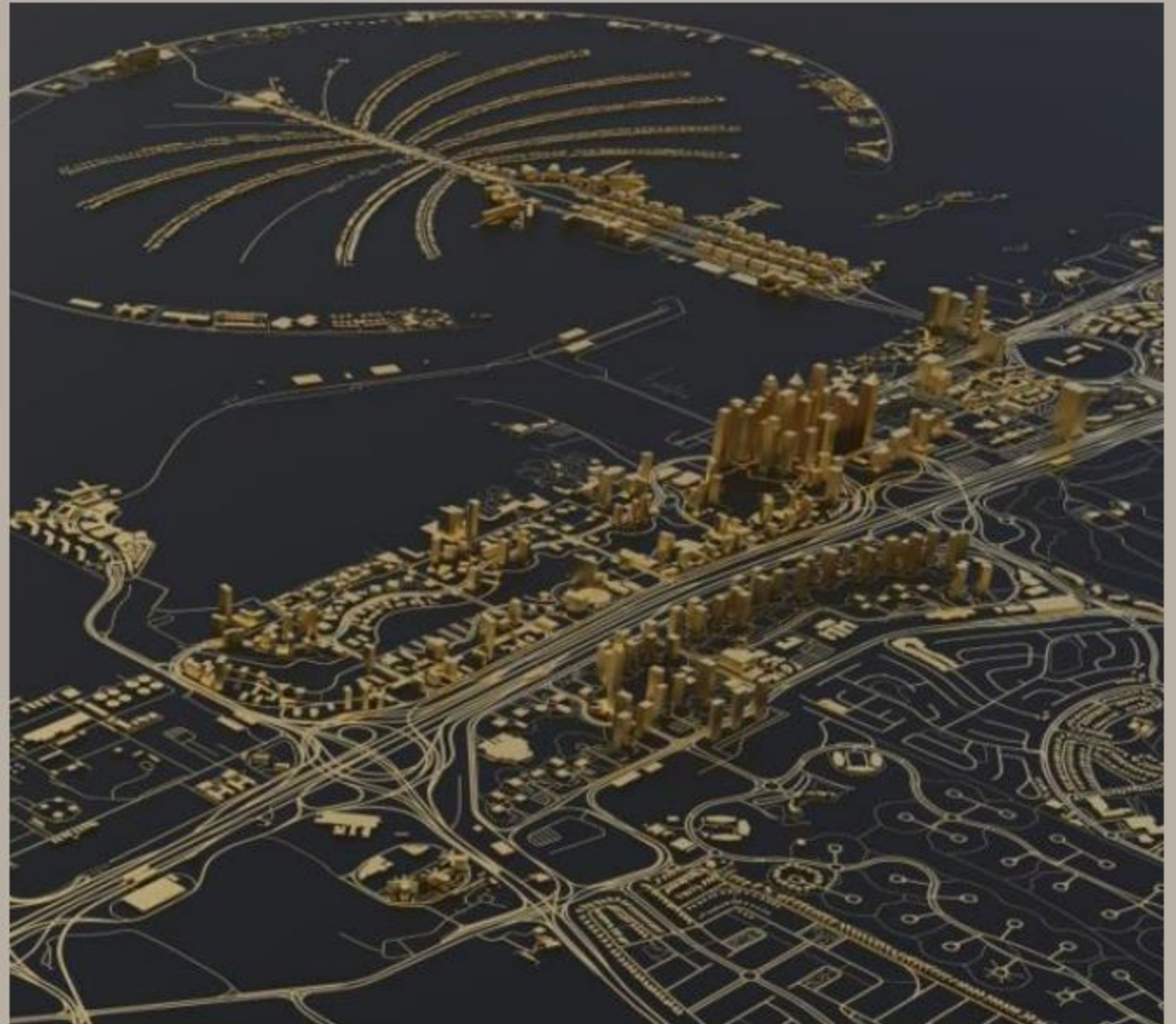
# The Palm



The Palm

# PRIME LOCATION

Dubai International Airport	32 km	30 min
Nakheel Mall	1 km	10 min walk
Burj Khalifa, Dubai Mall	20 km	20 min
Museum of the Future	21 km	20 min
Mall of Emirates	10 km	15 min
Marina, JBR	6 km	10 min
Blue Water Island	9 km	12 min
Souk Madinat, Burj Al Arab	6 km	12 min
Miracle Garden	16 km	20 min
Global Village	23 km	25 min
The Palm West Beach Promenades	100 m	5 min walk
The View at The Palm	600 m	8 min walk
Palm Monorail	2.3km	





The Palm

# PRIME LOCATION

Mileo The Palm is Dubai's first lifestyle beach hotel — a sanctuary where coastal soul meets urban vibrance. Perfectly set on Palm West Beach, it blends spacious residential-style comfort with curated dining and seamless service.

Mileo is more than a hotel; it is a destination where the city's cool crowd drifts between sand and skyline, where mornings are calm, evenings come alive, and every day feels like part of an endless summer.

Our 176 spacious rooms and residences blend effortless comfort with a coastal soul, while seven distinctive dining and drinking spots carry you from sunrise coffees to golden-hour sunsets and late-night gatherings

# Stylish

113	Studios, with a Mix of King and Twin beds
31	One-bedroom Apartments
31	Two-bedroom Apartments
1	Spacious Three-bedroom Rooftop Penthouse





43-46 SQM

## THE STUDIO

Stylishly designed studios, perfect for a relaxing holiday escape.

Enjoy breathtaking views of the Ocean and Palm Jumeirah, with a choice of King or Twin beds.

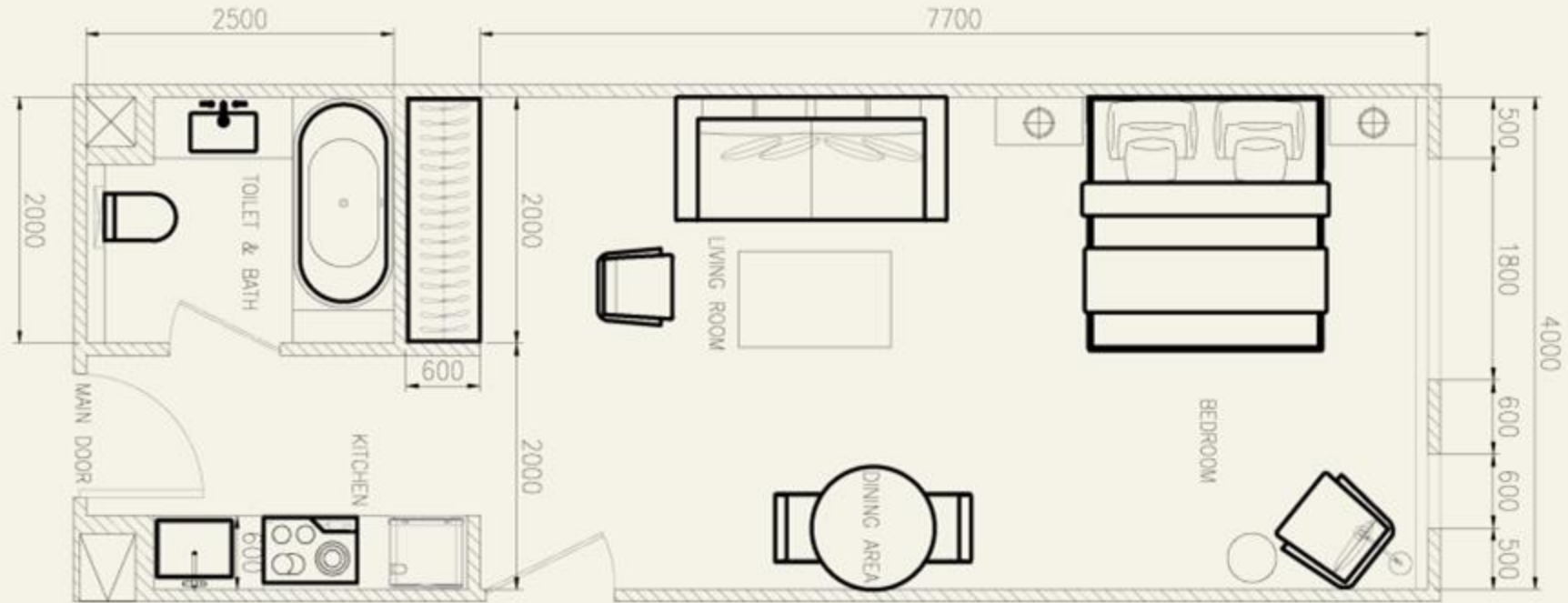
### Amenities & Brand Partnerships :

- Fully equipped Kitchen
- Washing Machine
- Coffee Machine
- Dyson hairdryer
- Amouage wet amenities



43-46 SQM

# THE STUDIO





75 SQM

# ONE-BEDROOM

Ideal for couples or families. Unwind in a separate living area and drift into restful sleep on a plush king-size bed.

The apartment also features a fully equipped kitchen with modern appliances including a washing machine, oven, gas stove ideal for both short and extended stays.

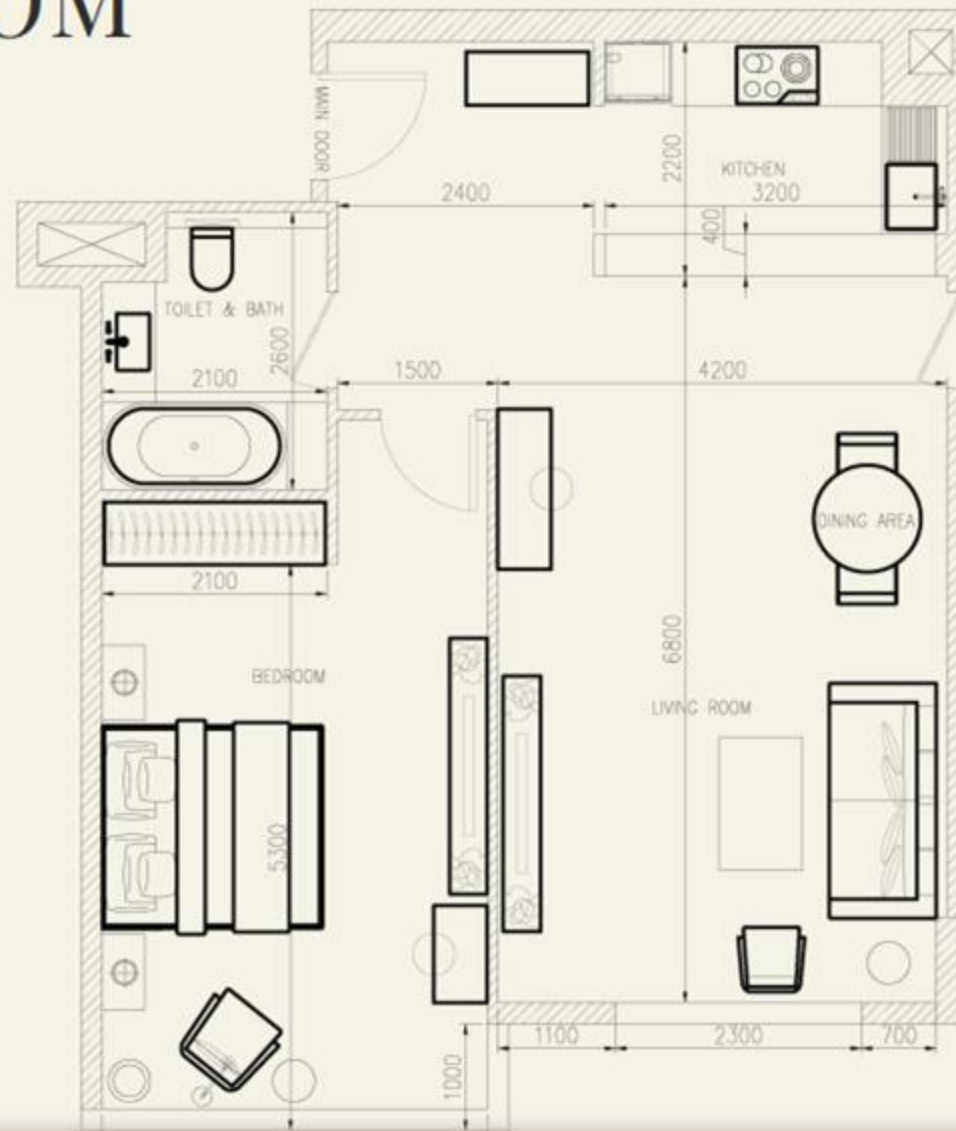
## Amenities & Brand Partnerships :

- Kitchen
- Gas stove
- Washing Machine
- Coffee Machine
- Dyson hairdryer
- Amouage wet amenities



75 SQM

# ONE-BEDROOM





113 SQM

## TWO-BEDROOM

The Apartments are perfect for families or groups.

Designed with a seamless blend of contemporary style and home-like warmth, they feature breathtaking panoramic views, two bedrooms, and a generous living area.

A fully equipped kitchen with a washing machine, oven, gas stove, and dishwasher completes the home-away-from-home experience.

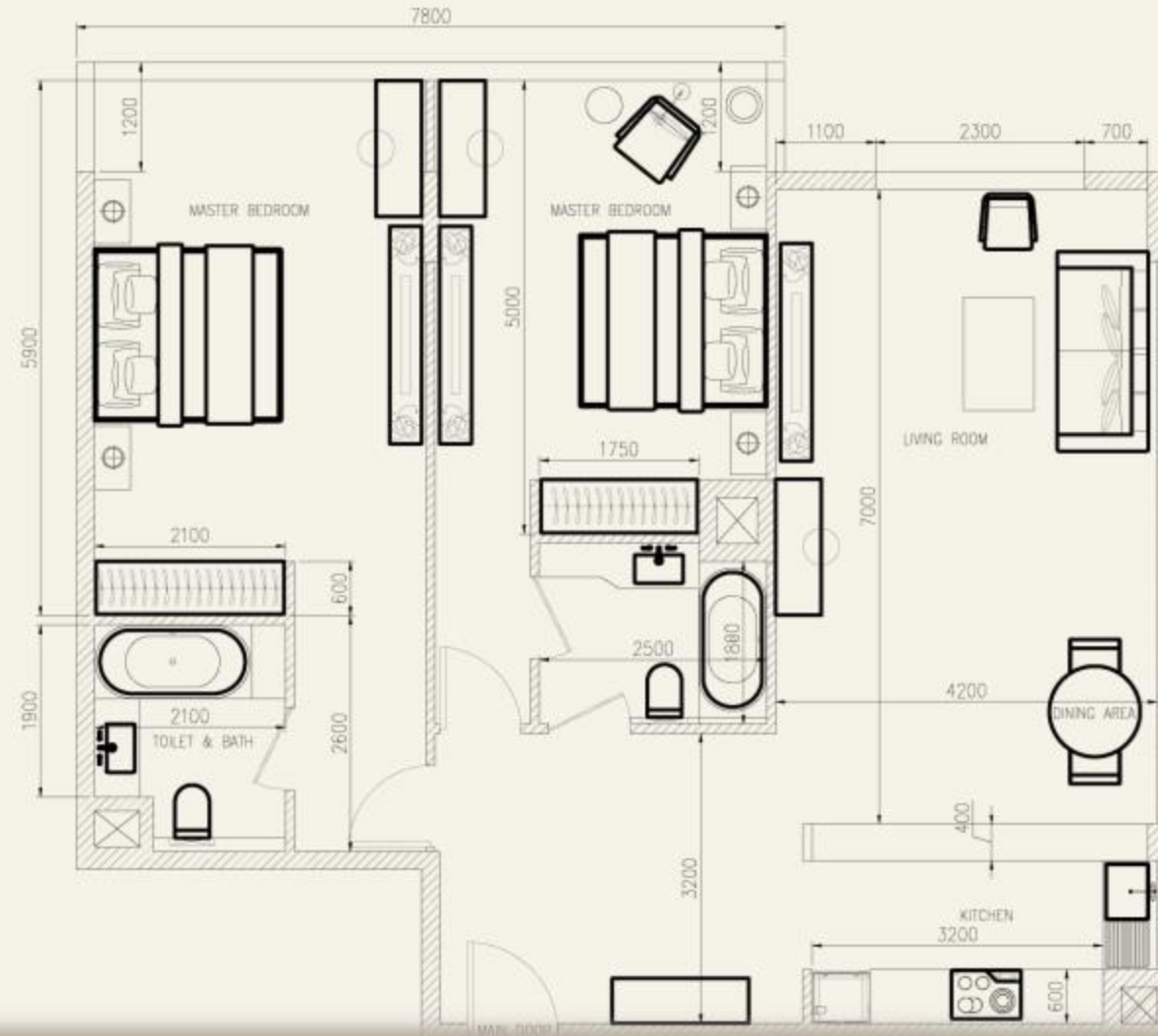
### Amenities & Brand Partnerships :

- Kitchen
- Gas stove
- Dishwasher
- Washing Machine
- Coffee Machine
- Dyson hairdryer
- Amouage wet amenities



113 SQM

# TWO-BEDROOM



# Dining & Culinary

MI<sup>U</sup>LEO  
THE PALM

## AY Restaurant:

International cuisine with live cooking stations

### Opening Time:

Breakfast : 6:30 am till 11:00 am

Lunch: 12:30 pm till 3:30 pm

Dinner: 6:30 pm till 10:30 pm

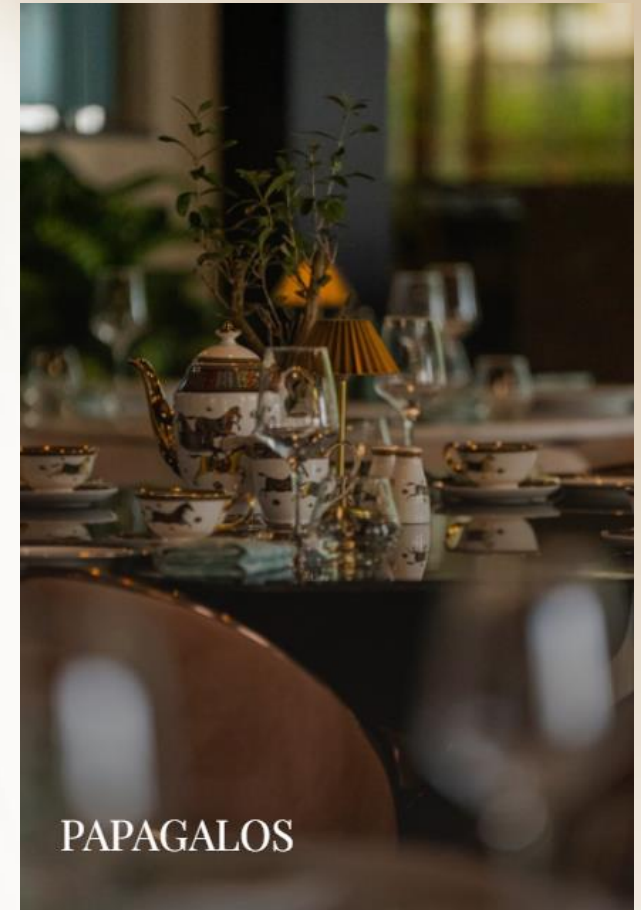


## Papagalos Restaurant:

Authentic Greek-Turkish flavours in a chic setting

### Opening Time:

10:00 am till 11:30 pm



# Dining & Culinary

MI<sup>LEO</sup>  
THE PALM

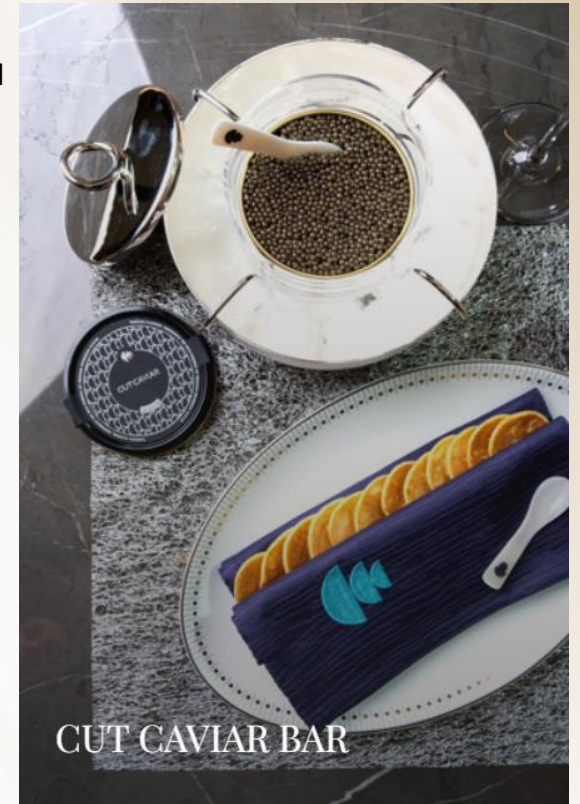
AYA Rooftop:  
Pool Bar

Opening Time:  
8:00 AM till 10:00 PM



Cut Caviar Bar:  
Finest caviar, Champagne, and artisanal bites

Opening Time:  
9 am till 12 Midnight



## Dining & Culinary

MI<sup>LEO</sup>  
THE PALM

### FanZone Sports Bar :

Authentic Greek-Turkish flavours in a chic setting

Opening Time:  
10 am till 12 Midnight



### Matcha 16 Cafe:

Fusion of Japanese matcha delicacies,  
vibrant spot for brunches

Opening Time:  
8:00 am till 8:00 pm



# Dining & Culinary

MI<sup>LEO</sup>  
THE PALM

## Cigar Lounge:

Cigars and top-shelf spirits retreat for connoisseurs

Opening Time:

**Soon To Open**

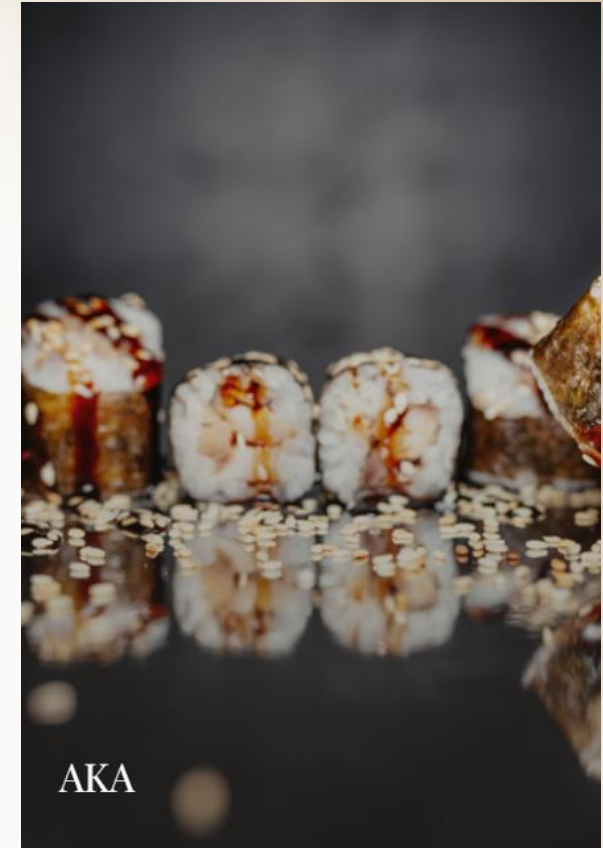


## AKA Sushi Bar:

Japanese cuisine, serving exquisite sushi and sashimi, with a contemporary vibe

Opening Time:

**Soon To Open**



# Dining & Culinary

MI<sup>LEO</sup>  
THE PALM

Room Service - 24 HOURS



# Hotel Facilities

MI<sup>LEO</sup>  
THE PALM

- Rooftop Infinity Pool with breathtaking views

**Open daily: 7am - 7pm**

- Access to SPA (additional charge for treatments)

**Open daily : 10am-10pm**

- High-tech Gym with panoramic skyline views

**Open daily**

- Leoz Luxury Gents Salon for high-end grooming services

**Open daily : 10am-10pm**

- Kids Club

- Banqueting Room

**Capacity - Up to 40 guests**



# Guest Amenities

MI<sup>u</sup>LEO  
THE PALM

- Luxurious transfers from and to the airport
- Signature welcome drink & refreshing towels upon arrivals
- 24 Hours Reception
- Access to GYM (24/7 for indoor guests)
- Luxurious wet amenities (Amouage)
- Bathtub
- Satellite/Cable colour TV with on-screen info
- Dyson Hair styling Dryer
- Telephone in bathroom
- Telephone in room
- Make-up/ Magnifying Mirror
- Bathrobes
- Slippers
- Alarm / Speaker Clock
- Safe box





MI<sup>♡</sup>LEO  
THE PALM

THANK YOU