



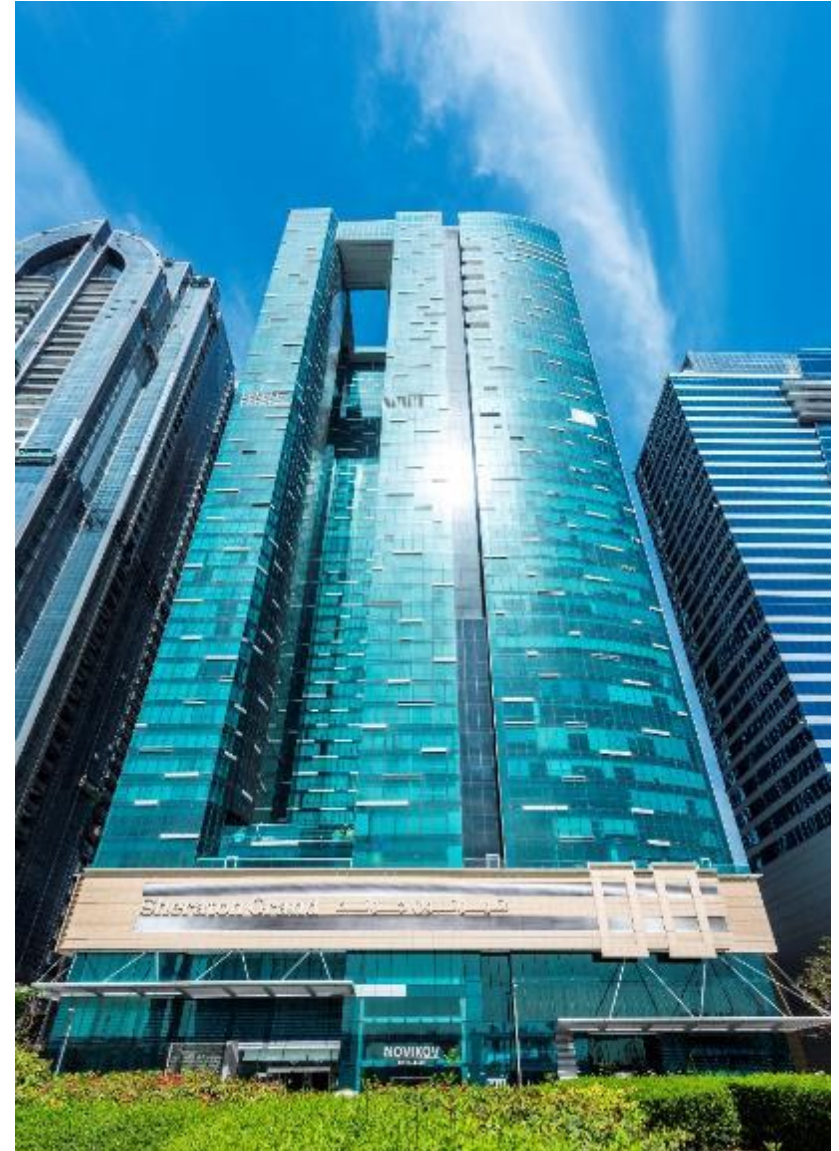
SHERATON  
GRAND  
Hotel Dubai

# Sheraton Grand Hotel, Dubai

# Your Crossroads in the Heart of Dubai

Building on Sheraton's proud heritage in the region, The Sheraton Grand Hotel, Dubai ushers in contemporary refinement and attentive personalization to Dubai's bustling business and social scene.

Standing 54 stories tall, it is not only the first Sheraton Grand built in the past 35 years in the UAE but also the highest.





# Location



- 10 km / 15 minutes from Dubai International Airport
- Prime location on Sheikh Zayed Road
- Opposite World Trade Center
- 5 minutes walk from WTC metro station
- 0.1 km / 1 minute away from restaurants and leisure facilities
- 5 km / 8 minutes from Dubai Mall and Burj Khalifa
- 10 minutes away from Jumeirah Beach





# Guestrooms and Suites



# Guestrooms and Suites

- 654 Guestrooms, Club rooms, Suites and 1, 2 and 3 bedroom apartments all under one roof
- Sheraton Sleep Experience
- Sheraton Club Lounge
- From 39 sqm bedrooms
- 42 inch LCD flat screen TV
- Nespresso machines and mini bar
- Complimentary WiFi



# Deluxe Room & Grand Deluxe Suite



The welcoming atmosphere & signature Sheraton Sleep Experience Bed are designed for a comfortable & relaxed stay.

All our rooms and suites feature Nespresso Machines for the comfort of our travelers along with complimentary WiFi.



Stay comfortably in one of our Deluxe Rooms and enjoy the stunning views of Sheikh Zayed Road.

Upgrade to a higher level of comfort with separate living and work area when you stay in a suite.



When you upgrade to the Sheraton Club, you'll find a place to connect with co-workers and gather with friends. All in a stylish space that feels like it was designed exclusively with you in mind. Enjoy breakfast, snacks and happy hour everyday.



# Five Dining Outlets



**Feast**  
International Cuisine



**Dawn & Dusk**  
Bar Food & Light Bites



**Link@Sheraton Café**  
Snacks & Light Bites



**Miss Lily's**  
Jamaican Restaurant & Bar



**Moe's on the 5<sup>th</sup>**  
French & International Restaurant & Bar





# Soul Wellness & Spa

Holistic Wellness with Local Relevance

# Soul Wellness & Spa



Adorned with earthy elements of luscious greens, warm woods, white flowy drapes and complimented by Arabian fragrances of Sandalwood. Soul Spa & Wellness provides a sense of calm and tranquility 52 floors above the hustle of Dubai's bustling city.



Soul Wellness & Spa takes it's guests through a journey from their minds to their bodies and their souls, offering luxurious bespoke treatments with customized skincare using organic locally grown remedies alongside some of the finest skincare brands in the world, including Elemis.



With guided meditation and breathing techniques for the soul, yoga, facials, detoxes and massages for the body. Soul Wellness & Spa offers everyone a 360 chance to rebalance, regenerate, resurface and recharge.





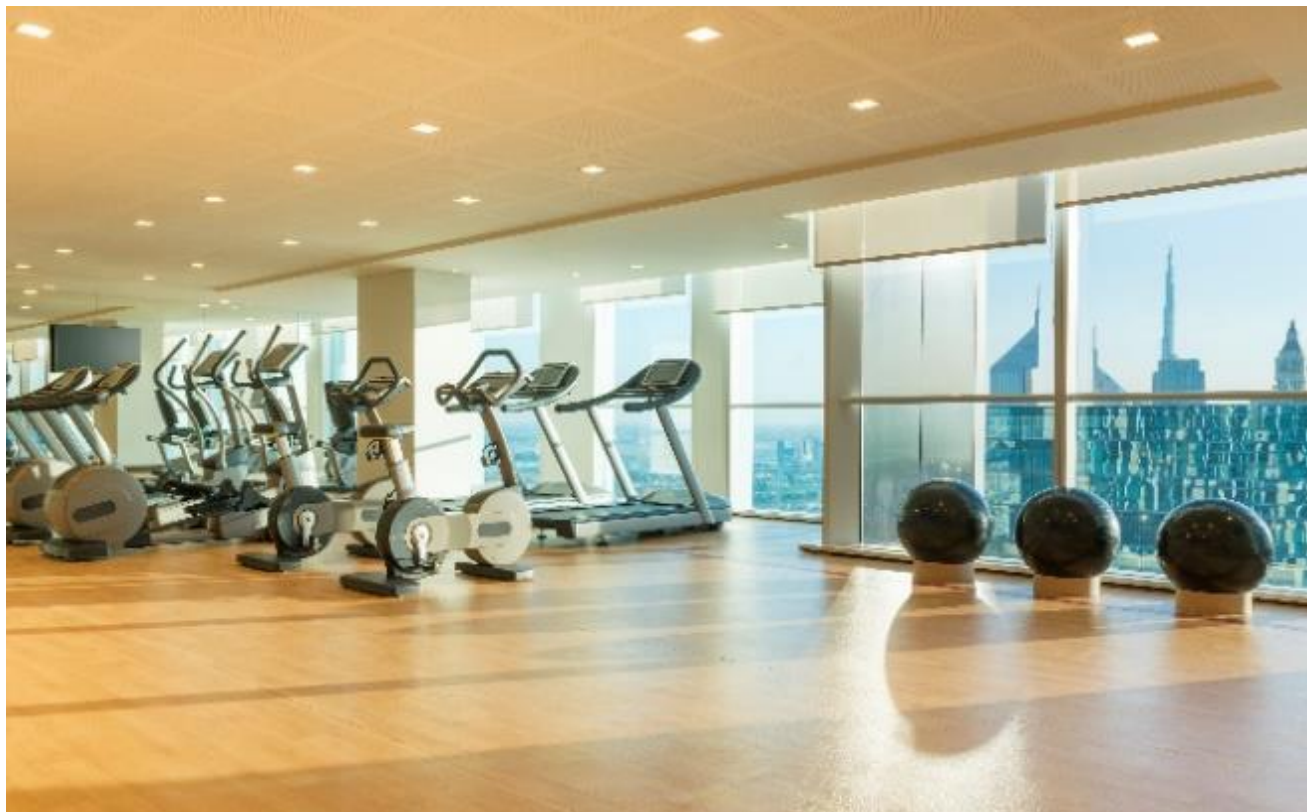
# Fitness Facilities

# Swimming Pool

Guests looking for the ultimate combination of rest and relaxation will find their private hideaway at Dawn & Dusk, the ultimate place for you to slip on sunglasses and lounge the day away. Our perfect combination of luxury loungers and private cabanas defines comfort whilst you bask under the Arabian Sun. To ensure the perfect oasis cool off in our temperature controlled swimming pool or relax in our Jacuzzi, providing the perfect stress reliever. You will truly feel like you are on a getaway whilst sipping on signature cocktails, mocktails and fruit smoothies and with a delicious selection of snacks which will tempt your taste buds.







# Sheraton Fitness

Sheraton Fitness is designed to fuel fast and focused workouts, delivering maximum results in minimum time. With Wi-Fi, 24-hour access and cutting-edge equipment, guests can customize their workout to their day and their stay.



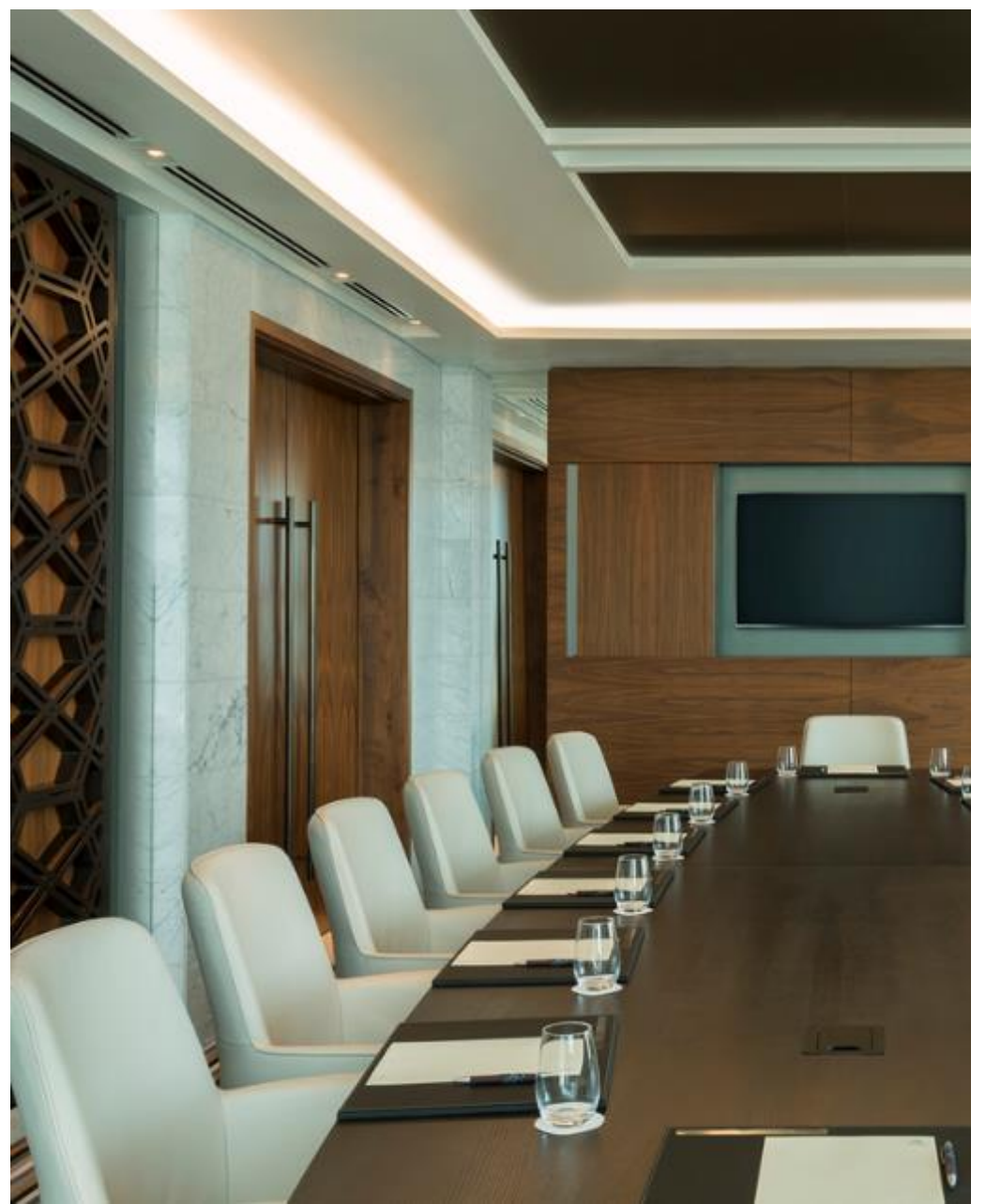
# Groups and Conferences



# Groups and Conferences

- High-ceiling Ballroom accommodating up to 375 persons in theatre style and 200 persons for banquets
- 6 well-designed meeting rooms with natural daylight and built-in state-of-the-art audio visual equipment.
- Private pre-function area
- Concierge Service
- Business Center
- Online Virtual Meeting Planner Available on [sheratongranddubai.com](http://sheratongranddubai.com)







# Groups and Conferences

Room Name	Dimensions					Capacities								Day light	Floor
	Length	Width	Height	m2	sq ft	Reception	Banquet	Theatre	Classroom	Cabaret	Boardroom	U-Shape	Hollow Sq.		
<i>Foyer</i>				488	5,253	200	108							Yes	1
Starlight Ball Room	21.60	17.00	6.10	360	3,875	400	200	375	250	120		44	48	No	1
Ball Room 1	11.20	17.00	6.10	180	1,937	160	90	160	96	48	24	38	44	No	1
Ball Room 2	10.32	17.00	6.10	180	1,937	160	90	160	96	48	24	38	44	No	1
<i>Nexus Foyer</i>				410	4,412	50								No	2
Nexus 1	7.18	5.69	2.70	44	473	30	30	25	30	24	14	14	16	Yes	2
Nexus 2	7.18	5.53	2.70	44	473	30	30	25	30	24	14	14	16	Yes	2
Nexus 3 (*)	8.38	6.85	2.70	51	550	60	50	50	24	30	16	16	20	Yes	2
Nexus 4 (*)	8.35	6.85	2.70	56	605	60	50	50	24	30	16	16	20	Yes	2
Nexus 3 & 4	16.90	6.85	2.70	107	1,155	120	96	75	40	66	32	32	40	Yes	3
Nexus 5	8.59	8.25	2.70	90	968	75	50	50	30	40	18	18	24	Yes	2
Boardroom	7.92	5.75	2.70	48	516						16			Yes	2
<b>Total</b>				<b>1,591</b>	<b>17,125</b>										



SHERATON  
GRAND  
Hotel Dubai

Thank you

[sheraton.com/granddubai](http://sheraton.com/granddubai)