



S O F I T E L

سوفيتل جميرا بيتش دبي
DUBAI JUMEIRAH BEACH

A night-time photograph of the Sofitel Dubai Jumeirah Beach hotel. The building is a tall, modern skyscraper with a distinctive facade of illuminated, geometric patterns. The sky is a deep blue, and the foreground shows a well-lit outdoor area with palm trees, some of which are wrapped in warm white lights. People are seen walking and sitting in the plaza. The overall atmosphere is vibrant and sophisticated.

SOFITEL

سوفيتل جميرا بيتش دبي
DUBAI JUMEIRAH BEACH

Situated in the vibrant heart of Jumeirah Beach Residence and the Walk, Dubai's most popular recreation promenade and retail destination The Beach, discover this elegantly luxurious hotel blending French art de vivre with Arabian culture.



SOFITEL

سوفيتل جميرا بيتش دبي
DUBAI JUMEIRAH BEACH

DISTINCTIVE FEATURES

- Beach-front five-star luxury hotel
- 444 sea view luxury rooms with balcony
- Distinctive Dining concepts
- Elegant & spacious meeting & ballrooms
- Infinity pool overlooking the Arabian Gulf
- Close proximity to business district and major attractions

LIFE IS MAGNIFIQUE AT SOFITEL DUBAI JUMEIRAH BEACH

Sofitel Dubai Jumeirah Beach is set under an infinite summer sky where the holiday spirit is always in fashion and the days are eternally long and soaked in sunshine. It has a blend of French “Art de recevoir” and refined contemporary Arabian opulence that is both warm and welcoming. Welcome to where the land meets the balmy azure waters of the Arabian sea.

Overlooking the sea, life is truly beautiful. Leave the world behind as our elegant surroundings whisk you away to your chosen pleasure. Whether your fancy is reclining at our pool, taking a short stroll down the nearby beach or a work out in our Sofitel Fitness, everything you need is right where you are.

Combining sea, shopping and relaxation with a carefree flair, the hotel is a sophisticated delight set in the heart of Dubai’s bustling urban beach surroundings.



01
LOCATION



THE ADDRESS

In the heart of the city's most hip and vibrant district, the hotel is within walking distance, or just a short car ride from Dubai's famous boutiques, shopping malls, restaurants, business hubs and tourist attractions. With easy access to and from the airports, life could not be more charmed.

Dubai International Airport (38km)

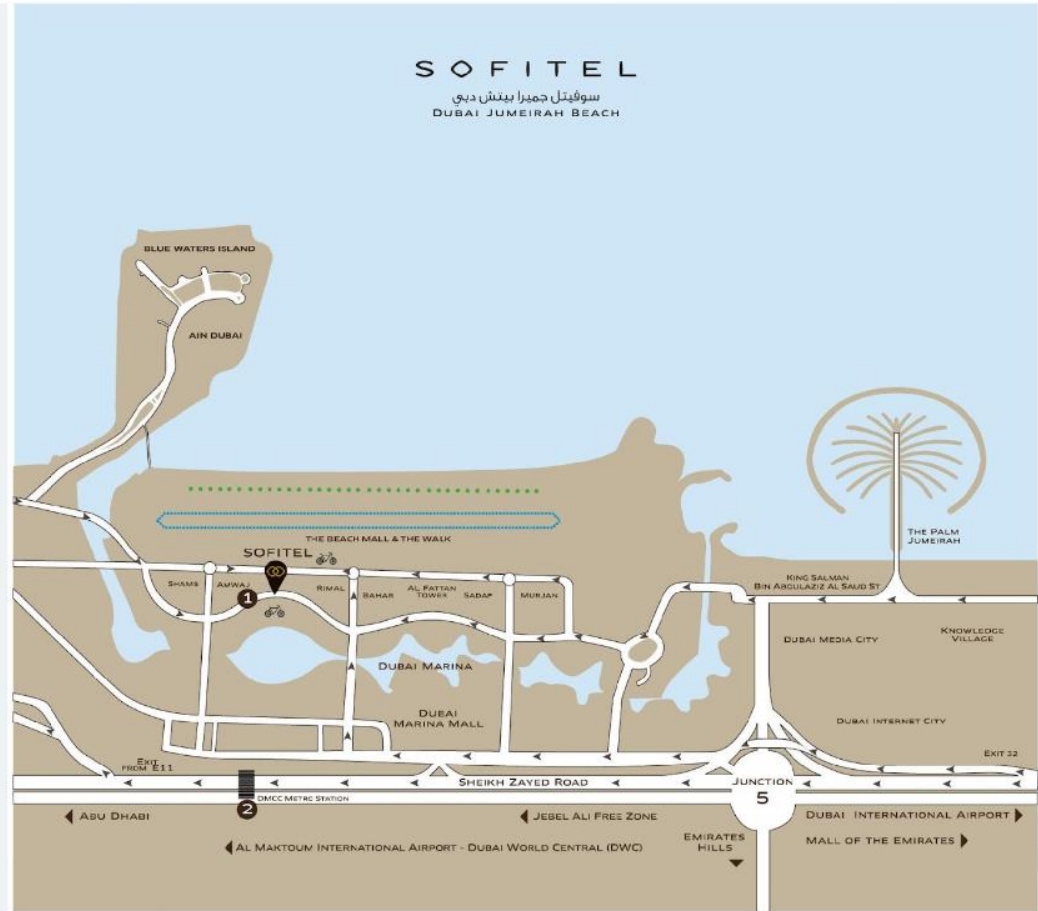
Al Maktoum International Airport (36 km)

Abu Dhabi International Airport (100 km)

DMCC Metro Station (1.6km)

JBR 2 Tram Station (0.3 km)

-  **SOFITEL DUBAI JUMEIRAH BEACH**
- 1**  **NEAREST TRAM STATION**
JUMEIRAH BEACH RESIDENCE 2
- 2**  **NEAREST METRO STATION**
DMCC METRO STATION
-  **JOGGING TRACK (3.5km)**
-  **JBR PUBLIC BEACH**
-  **NEAREST RENTAL BICYCLES**



02
ROOMS AND SUITES



GUEST ROOMS

Wake up in a postcard. With private balconies looking out over a true blue sea, Sofitel Dubai Jumeirah Beach is a statement in haute living. Each of our 444 rooms and suites include the trademark MyBed™ concept, an all feather bed and extra light down duvet enriched by a pillow menu for bespoke comfort.

FEATURES:

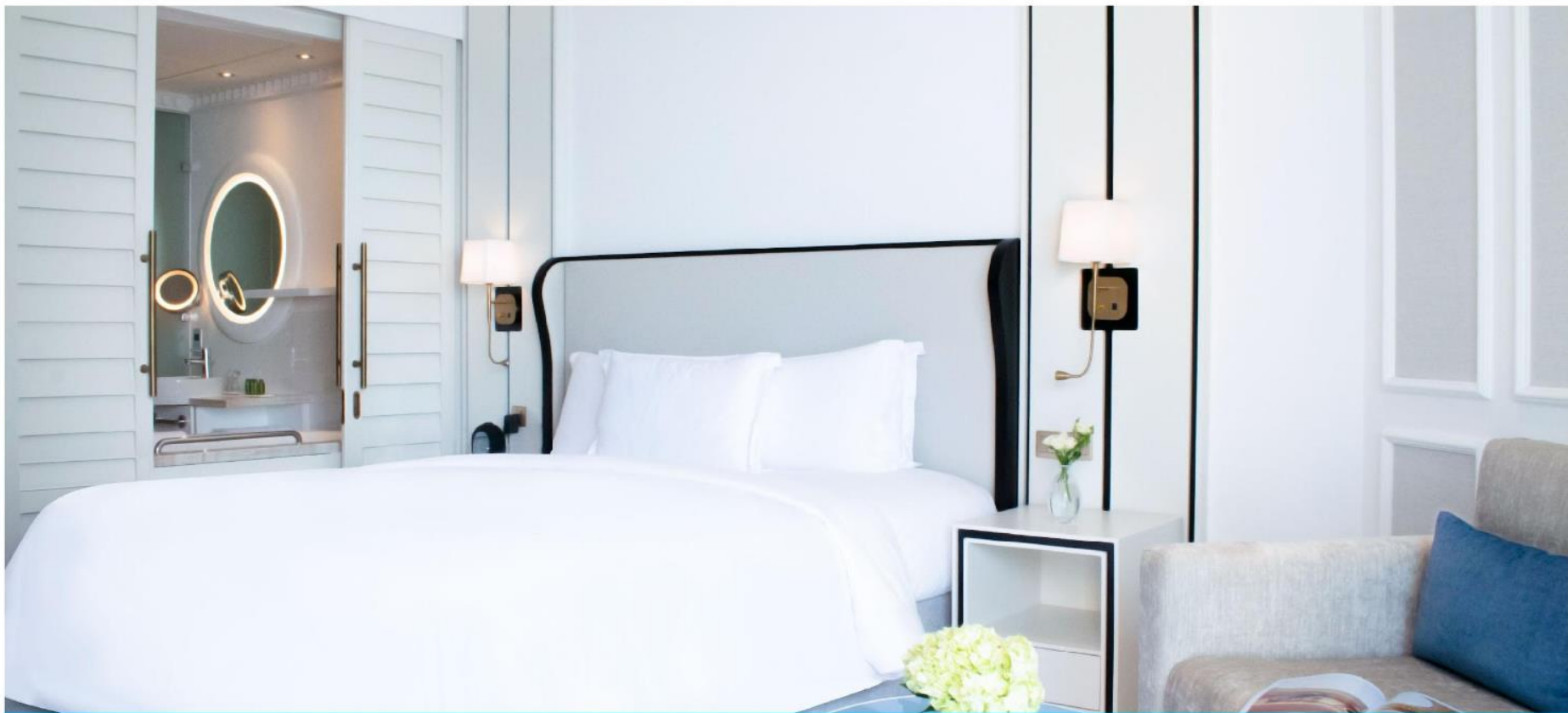
- All rooms with sea view and balcony
- MyBed™ concept
- Free Wi-Fi Internet access

SPECIFICATIONS:

- Total of 444 Rooms
- 41 Suites
- Connecting Rooms: 132
- Connecting Suite: 1
- Disabled Rooms: 6

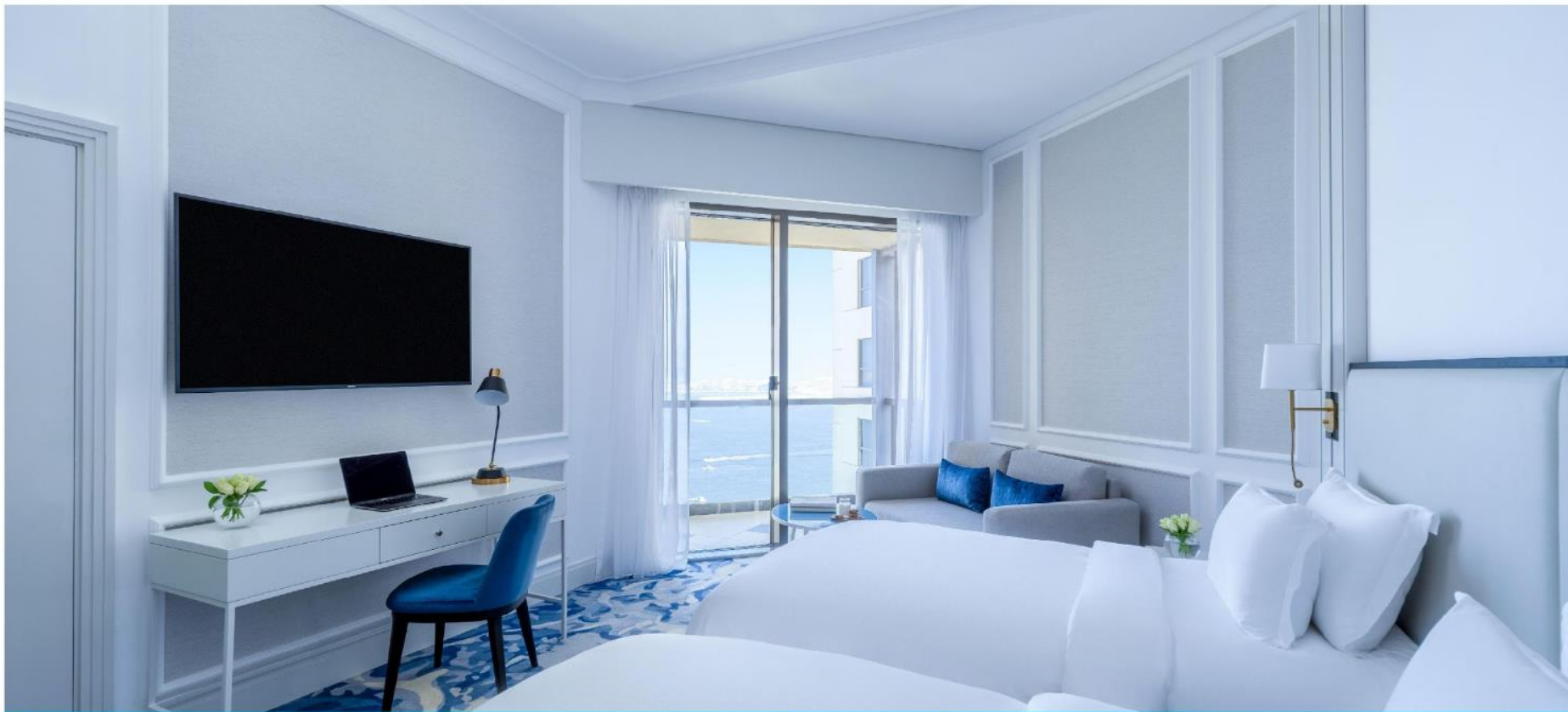
Club and suite guests can enjoy the exclusivity and limitless luxury of our executive lounge Club Millésime.





Superior King Room | Size: 35 sqm





Superior Twin Room | Size: 35 sqm





Luxury Room | Size: 36 sqm





Luxury Club Room | Size: 36 sqm



SUITES

Each suite is has a private balcony with views across the Arabian Gulf. Features French “Art de Recevoir” and refined modern décor with white walls and muted accents of blue, black, and gold, clean lines, and minimalist furniture reflecting natural materials and natural light. The style exudes a comfortable and casual elegance that is never ostentatious.

FEATURES:

- MyBed™ concept and pillow menu availability
- All suites with sea view and private balcony
- Club Millésime access
- Airport pick-up and drop off at a cost
- Free Wi-Fi Internet access
- Hermès bathroom amenities
- Nespresso coffee machines
- Separate living room

SPECIFICATIONS:

Prestige Suites: 12

Junior Suites: 27

Opera Suites: 2





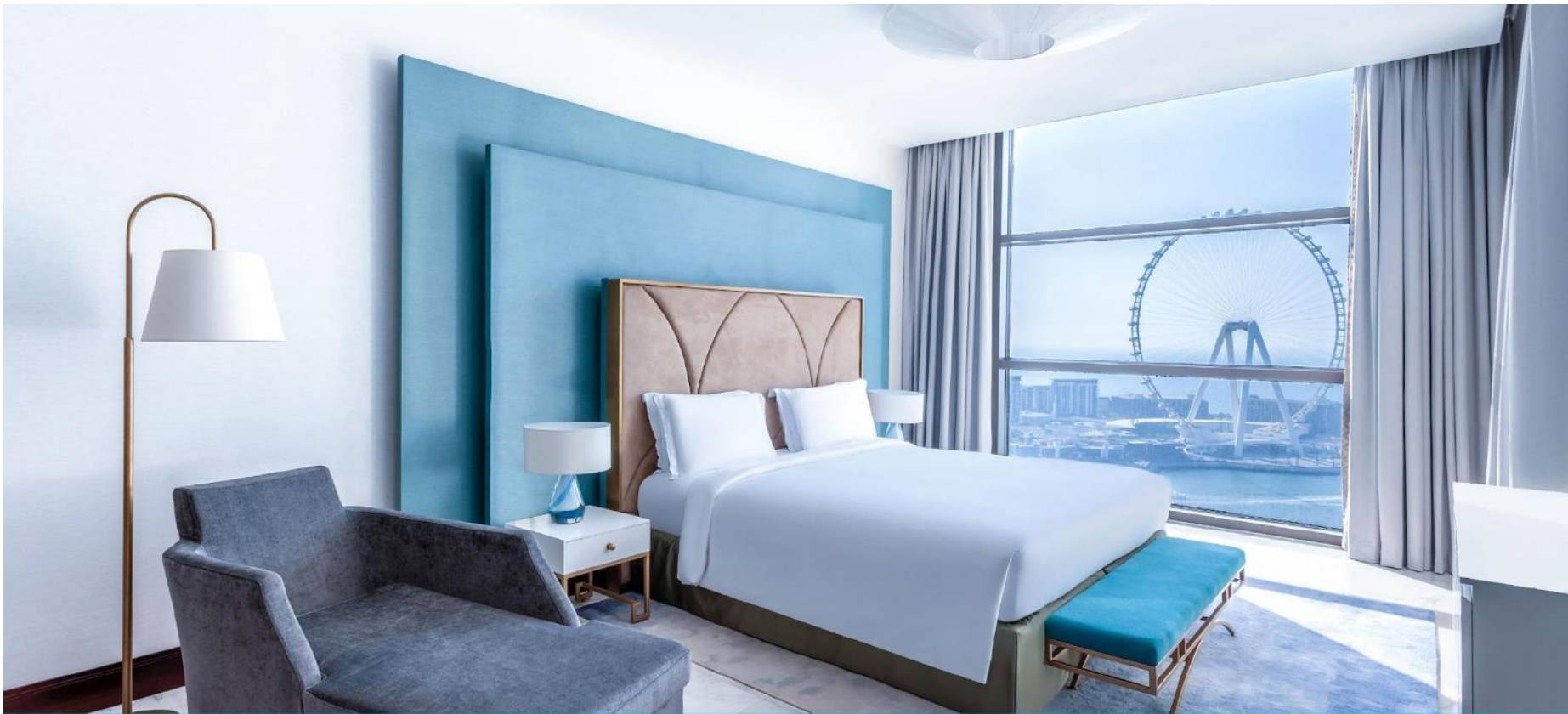
Junior Suite | Size: 50 sqm





Prestige Suite | Size: 65 sqm





Opera Suite | Size: 95 sqm



03
MAGNIFIQUE MEETINGS



MAGNIFIQUE MEETING ROOMS

We specialize in successful meetings infused with unrivaled “Art de Vivre”. An innovative concept in event planning, Magnifique Meetings focuses on your objectives and desired experiences.

Food and beverages are designed to complement your meeting objectives to inspire and delight you to work at your creative best. Our large pre-function area can be used for setup, registration and coffee breaks.

FEATURES:

- 5 elegantly appointed meeting rooms including the ballroom.
- Ballroom which can be divided into two distinct spaces.
- Personalised chef-crafted menus for your events.
- Elegant and spacious Pre Function Area.
- Podium, microphones and other additional audio visual equipment available upon request.





Monte Carlo Ballroom





Cannes





Menton





Antibes



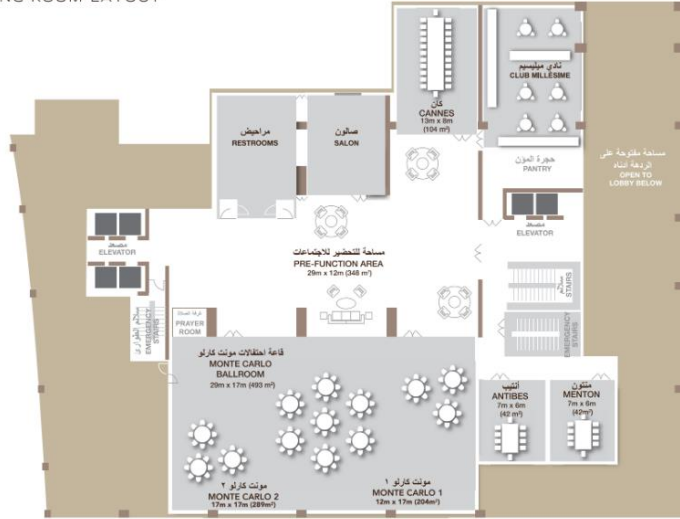


Pre-function area



FLOOR PLAN

تخطيط قاعة الاجتماعات
MEETING ROOM LAYOUT



CAPACITY CHART

MEETING ROOMS	SURFACE AREA (SQM)	LENGTH (M)	WIDTH (M)	CLASSROOM	THEATRE	U-SHAPE	BOARD ROOM	DINNER	CABARET
CANNES	105	13	8	20	25	10	10	20	16
ANTIBES	42	7	6	10	10	08	07	10	08
MENTON	42	7	6	10	10	08	07	10	08
MONTE CARLO 1	204	12	17	32	45	14	09	50	32
MONTE CARLO 2	289	17	17	40	54	16	11	72	48

04
WEDDINGS



MEMORABLE WEDDINGS

Let Sofitel Dubai Jumeirah Beach be the canvas for your dream wedding, henna, or engagement party. Inspired by your dream, our Magnifique wedding planners will fulfil all your heart's desires.

Our personalized service and attention to detail, complemented by a customized menu from the chef, will make your wedding day extra special! A wedding with natural light and a warm sea breeze on the charming terrace overlooking the sea or a cosy setting in the luxurious surroundings of the grand ballroom on the Magnifique meeting floor, your indoor or outdoor event inspired by the romance of France will be a day to remember.

Indulge in a magnificent celebration of your wedding day with elegant service, sumptuous cuisine and a picturesque setting.





Pre-function area





Outdoor Plantation Terrace



05

FOOD AND BEVERAGES





A.O.C International buffet is an all-day dining concept created with the introduction of classical oversized French panels brings a French cafe experience to a luxurious space. The restaurant offers diverse cuisine from fresh salads, a variety of cheeses, pasta prepared at live cooking stations and a wide selection of desserts.

OPERATIONAL HOURS

6.30 am to 11 pm (Daily)

BREAKFAST BUFFET

6.30 am to 10:30 am (Monday to Friday)

6.30 am to 11 am (Saturday to Sunday)

AED 110 per person

LUNCH BUFFET

12.30 pm to 3:30 pm (Daily)

AED 140 per person





THEME NIGHT DINNER BUFFET

7 pm to 11 pm (Daily)

Monday: Asian

Tuesday: Arabic

Wednesday: Italian

Thursday: French

Friday: Mediterranean

Saturday: International

Sunday: Ribs

From AED 175 per person with soft beverages

LE GRAND BRUNCH

1 pm to 4 pm (Every Saturday)

From AED 299 per person with soft beverages

BBQ NIGHT BY THE TERRACE

7:30 to 10:30 pm (Every Friday)

From AED 299 per person with soft beverages





A well-curated wine list, fresh seafood, raclette, and decadent desserts complement the interior with a garden-like atmosphere. This is our little Parisian corner, **Plantation Brasserie, Bar & Terrace**. A perfect spot for a casual rendezvous or an a la carte menu from breakfast to dinner. Homemade specialties, yet contemporary, make for a memorable culinary journey unlike any other.

OPERATIONAL HOURS (Plantation Brasserie)

8 am to 2 am (Sunday to Friday)

8 am to 12 noon, 6 pm to 2 am (Every Saturday)

OPERATIONAL HOURS (Plantation Bar)

8 am to 2 am (Sunday to Friday)

12 noon to 2 am (Every Saturday)





HAPPY HOUR

4 pm to 8 pm (Daily)

AED 32 per selected beverages

POST BRUNCH HAPPY HOUR

4 pm to 6 pm (Every Saturday)

AED 100 for 1 hour and AED 150 for two hours

LET THE NIGHT BEGIN

9 pm to 12 am (Every Thursday)

AED 50 per cocktail





Next to the hotel's infinity pool is a lounge that epitomizes Dubai at its best, with perfect sunset views, an undeniably impressive skyline lighting up the evening sky, and all the atmosphere of the vibrant city. Promising an optimal level of service where you can indulge in light meals and drinks and host unforgettable soirees by the pool.

OPERATIONAL HOURS

10 am to 9 pm (Daily)

SHISHA

2 pm to 9 pm (Daily)

9 pm to 12 am (Every Thursday)

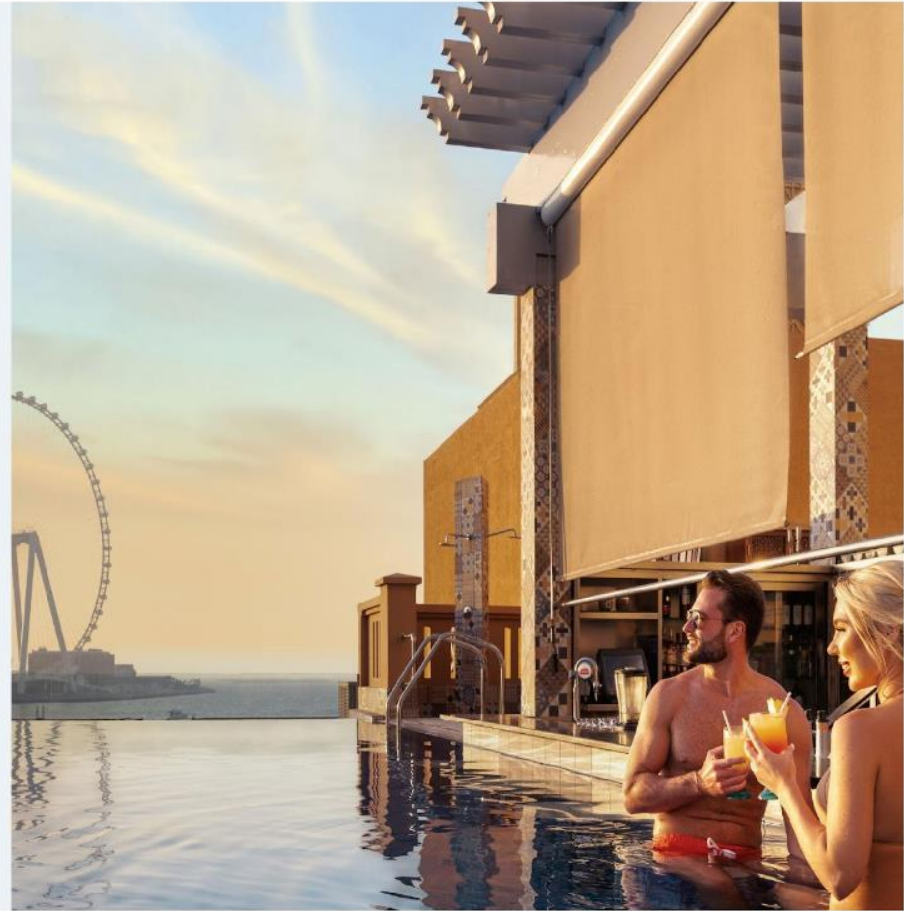
INFINITE INFINI

1 pm to 4 pm (Monday to Friday)

4 pm to 6 pm (Monday to Friday)

HAPPY HOUR

7 pm to 9 pm (Daily)





Café Concierge offers a wide selection of delectable treats and is the perfect place for a moment's pause on a busy day or a relaxing weekend afternoon. A classic French afternoon treat you must try is Le Goûter, a box of freshly baked scones, lemon cake, financier, raspberry macaroon, chocolate éclair, fresh raspberry tart, and Swiss rolls, perfectly accompanied by Chantilly cream, blueberry compote, and Nutella. Combine these French gourmandises in the late afternoon with a selection of teas and coffees.

OPERATIONAL HOURS

8 am to 11 pm (Daily)

Daily Happy Hour – Le Bonheur

8 pm to 11 pm (Daily)

50% off discount on displayed food items

Le Goûter

2 pm to 5 pm (Daily)

AED 65 per person



06
PROMOTIONS



LE GRAND BRUNCH

A.O.C International Buffet

1 pm to 4 pm (Every Saturday)

Escape to the French Riviera every Friday where signature seafood flare meets Cote d'Azur charm.

Price

AED 299 per person inclusive of soft beverages

AED 399 per person inclusive house beverages

AED 625 per person with bubbly and house beverages

*50% off for 6 to 12 years of age

*Complimentary for two children up to 6 years of age per paying couple



BBQ NIGHT BY THE TERRACE

A.O.C

7.30 pm to 10.30 pm (Every Friday)

What better way to enjoy the Friday sunset than with authentic premium meats grilled over charcoal, with exciting highlights like Korean BBQ and Tomahawk steaks.

Price

AED 299 per person with unlimited soft beverages

AED 399 per person with unlimited house beverages



HAPPY HOUR

Infini Pool Lounge

Enjoy our Happy Hours with mesmerizing Gulf views, light music at sunset.

INFINITE INFINI

1 pm to 6 pm

Price

AED 190 per person for 1 pm to 4 pm

AED 110 for 4 pm to 6 pm

DAILY HAPPY HOUR

7 pm to 9 pm (Daily)

Price

AED 32 per drink



LE GOÛTER

Café Concierge

3 pm to 5 pm (Daily)

Indulge in freshly baked French baguette, homemade hazelnut spread, saffron infused rice pudding and signature date éclair palmier.

Price

AED 65



LET THE NIGHT BEGIN

Plantation Brasserie, Bar & Terrace
9 pm to 12 am (Every Thursday)

Carefully crafted cocktails made with the finest gins in town.

Price

AED 50 per cocktail



L'APÉRO

Plantation Brasserie, Bar & Terrace
5 pm to 7 pm (Daily)

L'Apéro is inspired by the cultural and culinary tradition of the French aperitif, a true ode to the joy and celebration of the sunset with a drink. Choose from a refreshing French 75, the famous Kir Royal or an anise-flavoured Pastis at the Plantation Bar & Terrace or in the comfort of your private balcony

Price

AED 110 for snack tray with two cocktails



07
FACILITIES



INFINI POOL

Overlooking the Arabian sea and The Palm Jumeirah and a sea view pool with al fresco lounge can be found on Level P3. Beach aficionados will enjoy the hotel's location for sunbathing with direct access to the sandy public beach.

Daily 7 am to 8 pm

Complimentary beach kits are available to hotel guests at the Sofitel Fitness reception.



SOFITEL FITNESS

Health Club overlooking Dubai Marina with state of the art fitness equipment, sauna and steam room open for 24 hours.

Sofitel Fitness Memberships are also available.



CLUB MILLÉSIME

Club and Suite guests can experience our exclusive executive lounge, Club Milleime. Enjoy a sumptuous à la carte breakfast in a relaxed private setting. In the afternoon, our chef prepares a Le Goûter or afternoon tea with a selection of decadent snacks and light refreshments. Inspired by the cultural and culinary tradition of L'Apéro, we also invite our guests to join us for a convivial evening of socializing and indulgence.

OPERATIONAL HOURS

7 am to 8 pm

Le Goûter 2 pm to 5 pm

L'Apéro 6 pm to 8 pm

FEATURES

- Private check-in
- Afternoon treats & coffee/tea
- Sophisticated atmosphere
- High speed Wi-Fi



09
NEARBY ATTRACTIONS





Flying Cup - Dining in the sky



Aqua Fun Water Park



Walking distance to the Dubai Marina Mall



1 minute walk to the JBR Beach





Dubai's popular recreation promenade "The Walk"



Restaurant, shopping & retail destination



Ain Dubai



S O F I T E L
HOTELS & RESORTS

