



YOUR FRIENDLY NEIGHBOURHOOD LIFESTYLE HOTEL ON PALM JUMEIRAH.

Welcome to Andaz Dubai The Palm by Hyatt, where luxury, community spirit, and a vibrant, personalized guest experience come together effortlessly. More than just a hotel, Andaz Dubai The Palm is a dynamic lifestyle destination that embodies the energy and creativity of Palm Jumeirah.

STYLISH OFFERINGS

RELAX like no one's watching

Sink into the artistry of 216 guest rooms and suites, where every corner pays homage to Dubai's heritage. Discover:

- Floor-to-ceiling windows with panoramic views of Palm Jumeirah
- A complimentary mini bar with a locally inspired selection of non-alcoholic drinks and snacks
- Spacious bathrooms with separate bathtub and rain shower
- Environmentally awesome bath amenities

PLAYFUL INDULGENCES

MOVE like no one's watching

- Access to 250-meter beach with sun loungers and umbrellas
- Large beachfront and Infinity Pool
- Cabana Pool (adults-only rooftop)
- Fitness Centre and Yoga Terrace
- ORA Spa Wellness Center

DELICIOUS DETOURS

INDULGE like no one's watching

La Coco Social

International Food, Comfort Food, Family-Friendly, Bar & Lounge, Pool & Beach views, Palm Jumeirah's East Beach, Global Flavors, Live Events, Kids Activities

The Locale

All-day Dining, Neighborhood Eatery, Breakfast & Dinner Buffet, Indoor & Outdoor Seating, Shisha Available, El Boutique Coffee Shop.

Le Petit Chef

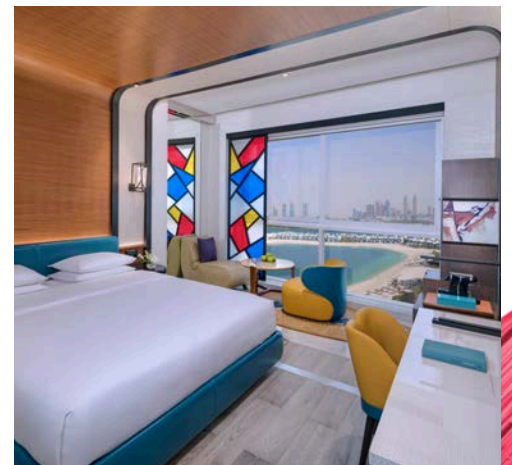
Immersive Dining Experience, Specially Curated Set Menus (kids menu available), Dinner Only, Indoor Seating.

Asia Asia

Pan Asian Restaurant, Elevated Dining Experience, 360-degree panoramic rooftop views of Palm Jumeirah, A La Carte Menu, Sunset Brunch.

Platina - 'Coming Soon'

Karaoke bar, Futuristic Interiors, Bar, Night Life, Cocktail Culture, Shisha Lounge, Indoor Seating, Speakeasy



ESCAPE

LIKE NO ONE'S WATCHING

READY WHEN YOU ARE *ENGAGE like no one's watching*

- 24-hour In-Room Dining
- 24-hour concierge
- Valet parking
- Travel desk
- Major credit cards accepted
- Babysitting service on request
- Airport transfer (available on request)
- Laundry/dry cleaning
- Multilingual staff

COFFEE, WIFI, PRODUCTIVITY *GRIND like no one's watching*

Welcome to the Andaz Lounge—your creative coworking hub where work meets play. With vibrant vibes and chic spaces, it's where productivity and inspiration collide.

LOCAL GEMS *EXPLORE like no one's watching*

- Alserkal Art Avenue
- TODA Theatre
- Al Seef
- Gold Souk
- Al Fahidi Fort
- Jumeirah Mosque
- Burj Khalifa / Dubai Mall
- Museum of the Future

AT YOUR DOORSTEP *STROLL like no one's watching*

- Nakheel Mall
- Aquaventure Waterpark
- The View at Palm Jumeirah
- Palm Monorail
- Emirates Golf Club
- Ittihad Park
- The Lost Chambers Aquarium
- Palm West Beach
- Club Vista Mare (dining destination)

CITY PLAYBOOK *TRAVEL like no one's watching*

- Language: Arabic and English
- Currency: UAE Dirham (AED)
- Climate: Mid April to September >37°C . October to March <33°C
- Dress Code: Modest in public areas
- Ramadan Hours - Familiarize yourself
- Respect local customs
- Know the Visa Requirements





UNIQUE SPACES

PLAN like no one's watching

Andaz Dubai The Palm features 854 square meters of flexible event space and two chic outdoor terraces, perfect for turning any gathering into a standout affair. Whether you're hosting a buzz-worthy business meeting or a lively celebration, our expert team is ready to add a splash of flair and creativity to your event.

Living Room

304 sq m | Capacity 80 Guests

Unveil our Living Room & Terrace with stunning Burj Al Arab views. Bathed in natural light and featuring an open kitchen, it's the perfect spot for creative meetings or chic cocktail parties.

Dome Studio

406 sq m | Capacity 60 Guests

Boasting two terraces with stunning Dubai skyline views, our Dome Studio is perfect for up to 60 guests. With its natural light, breakout rooms, and fully equipped kitchen, it's ideal for any type of event.

Residence Hall

142 sq m | Capacity 70 Guests

Ignite creativity in our flexible space for up to 70 guests. Residence Hall can transform into three intimate studios, perfect for workshops or events.

Studios

45 sq m | Capacity 20 Guests

Step into our Studios, where intimate meetings meet style. Combine them to create the Residence Hall or use them solo for versatile, smooth gatherings.

Andaz Deck

164 sq m | Capacity 60 Guests

Perched on the 14th floor, the Andaz Deck offers breathtaking panoramic views of the Arabian Gulf & Dubai's iconic skyline. This open-air rooftop space is perfect for unforgettable social gatherings, stylish celebrations, & private events under the stars.

